


Anti-gtf3c3 antibody ab74230

3 图像

概述

产品名称	Anti-gtf3c3抗体
描述	兔多克隆抗体to gtf3c3
宿主	Rabbit
经测试应用	适用于: WB, IP, IHC-P
种属反应性	与反应: Human 预测可用于: Rat, Rabbit, Horse, Guinea pig, Cow, Dog, Pig, Chimpanzee, Rhesus monkey, Gorilla, Orangutan, Xenopus tropicalis 
免疫原	Synthetic peptide corresponding to a region between residue 475 and 525 of human gtf3c3 (NP_036218.1)
阳性对照	IP: HEK293T lysate; WB: HeLa, Jurkat cell lysates; IHC: human breast carcinoma
常规说明	<p>The Life Science industry has been in the grips of a reproducibility crisis for a number of years. Abcam is leading the way in addressing this with our range of recombinant monoclonal antibodies and knockout edited cell lines for gold-standard validation. Please check that this product meets your needs before purchasing.</p> <p>If you have any questions, special requirements or concerns, please send us an inquiry and/or contact our Support team ahead of purchase. Recommended alternatives for this product can be found below, along with publications, customer reviews and Q&As</p>

性能

形式	Liquid
存放说明	Shipped at 4°C. Upon delivery aliquot and store at -20°C. Avoid freeze / thaw cycles.
存储溶液	pH: 6.8 Preservative: 0.09% Sodium azide Constituents: 0.1% BSA, Tris buffered saline
纯度	Immunogen affinity purified
克隆	多克隆
同种型	IgG

应用

The Abpromise guarantee

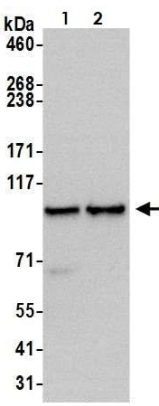
Abpromise™承诺保证使用ab74230于以下的经测试应用

“应用说明”部分 下显示的仅为推荐的起始稀释度;实际最佳的稀释度/浓度应由使用者检定。

应用	Ab评论	说明
WB		1/2000 - 1/10000. Predicted molecular weight: 101 kDa.
IP		Use at 2-5 µg/mg of lysate.
IHC-P		1/200 - 1/1000. Perform heat mediated antigen retrieval with citrate buffer pH 6 before commencing with IHC staining protocol.

靶标	
功能	Involved in RNA polymerase III-mediated transcription. Integral, tightly associated component of the DNA-binding TFIIIC2 subcomplex that directly binds tRNA and virus-associated RNA promoters.
序列相似性	Contains 11 TPR repeats.
细胞定位	Nucleus.

图片



Western blot - Anti-gtf3c3 antibody (ab74230)

All lanes : Anti-gtf3c3 antibody (ab74230) at 0.1 µg/ml

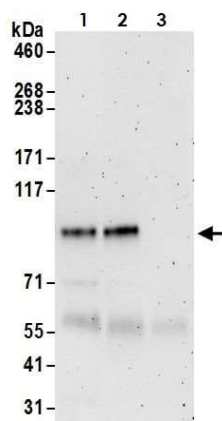
Lane 1 : HeLa whole cell lysate

Lane 2 : Jurkat whole cell lysate

Lysates/proteins at 50 µg per lane.

Predicted band size: 101 kDa

Exposure time: 3 minutes



Immunoprecipitation - Anti-gtf3c3 antibody (ab74230)

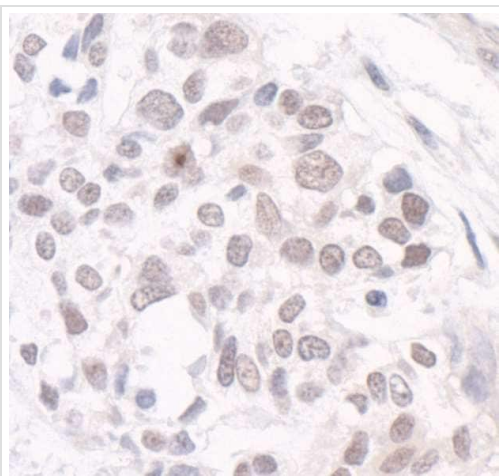
gtf3c3 was immunoprecipitated from HEK293T whole cell lysate (1 mg per IP reaction, 20% loaded) with ab74230 at 3 µg per reaction. Western blot was performed on the immunoprecipitate using ab74230 at 1 µg/mL.

Lane 1: ab74230 IP in HEK293T whole cell lysate.

Lane 2: ab74230 IP in HEK293T whole cell lysate.

Lane 3: Control IgG in HeLa whole cell lysate.

Detection: Chemiluminescence with an exposure time of 3 minutes



Immunohistochemistry (Formalin/PFA-fixed paraffin-embedded sections) - Anti-gtf3c3 antibody (ab74230)

Immunohistochemistry (Formalin/PFA-fixed paraffin-embedded sections) analysis of human breast carcinoma tissue labelling gtf3c3 with ab74230 at 1/1000 dilution.

Please note: All products are "FOR RESEARCH USE ONLY. NOT FOR USE IN DIAGNOSTIC PROCEDURES"

Our Abpromise to you: Quality guaranteed and expert technical support

- Replacement or refund for products not performing as stated on the datasheet
- Valid for 12 months from date of delivery

- Response to your inquiry within 24 hours
- We provide support in Chinese, English, French, German, Japanese and Spanish
- Extensive multi-media technical resources to help you
- We investigate all quality concerns to ensure our products perform to the highest standards

If the product does not perform as described on this datasheet, we will offer a refund or replacement. For full details of the Abpromise, please visit <https://www.abcam.cn/abpromise> or contact our technical team.

Terms and conditions

- Guarantee only valid for products bought direct from Abcam or one of our authorized distributors