


Anti-GSK3 alpha antibody [EP793Y] ab40870

敲除验证
重组
RabMAb

[14 References](#)
[6 图像](#)

概述

产品名称	Anti-GSK3 alpha抗体[EP793Y]
描述	兔单克隆抗体[EP793Y] to GSK3 alpha
宿主	Rabbit
经测试应用	适用于: ICC/IF, WB, IHC-P
种属反应性	与反应: Human 预测可用于: Mouse, Rat 
免疫原	Synthetic peptide within Human GSK3 alpha aa 50-150 (N terminal). The exact sequence is proprietary. Database link: P49840
阳性对照	WB: HAP1, HEK293T, HepG2 and HeLa cell lysate. IHC-P: Human breast carcinoma tissue. ICC/IF: HeLa cells
常规说明	<p>This product is a recombinant monoclonal antibody, which offers several advantages including:</p> <ul style="list-style-type: none"> - High batch-to-batch consistency and reproducibility - Improved sensitivity and specificity - Long-term security of supply - Animal-free production <p>For more information see here.</p> <p>Our RabMAb[®] technology is a patented hybridoma-based technology for making rabbit monoclonal antibodies. For details on our patents, please refer to RabMAb[®] patents.</p>

性能

形式	Liquid
存放说明	Shipped at 4°C. Upon delivery aliquot and store at -20°C. Avoid freeze / thaw cycles.
存储溶液	<p>pH: 7.20</p> <p>Preservative: 0.05% Sodium azide</p> <p>Constituents: 0.1% BSA, 40% Glycerol (glycerin, glycerine), 9.85% Tris glycine, 50% Tissue culture supernatant</p>
纯度	Protein A purified
克隆	单克隆

克隆编号 EP793Y

同种型 IgG

应用

The Abpromise guarantee **Abpromise™**承诺保证使用ab40870于以下的经测试应用

“应用说明”部分 下显示的仅为推荐的起始稀释度;实际最佳的稀释度/浓度应由使用者检定。

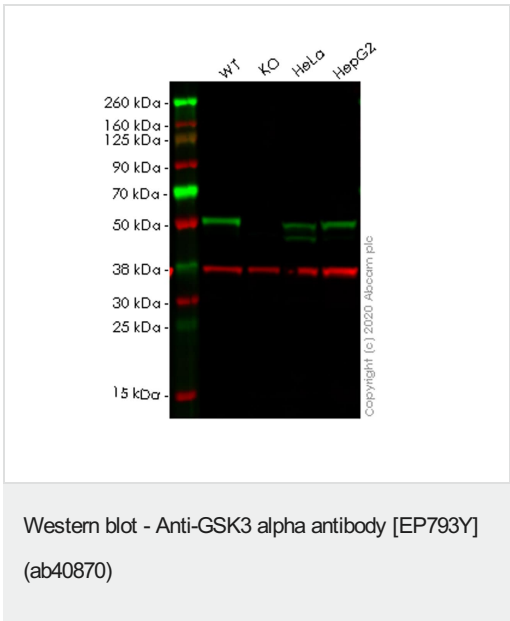
应用	Ab评论	说明
ICC/IF		1/200.
WB		1/5000. Detects a band of approximately 51 kDa (predicted molecular weight: 51 kDa).
IHC-P		Use at an assay dependent concentration. Perform heat mediated antigen retrieval with citrate buffer pH 6 before commencing with IHC staining protocol.

靶标

功能 Implicated in the hormonal control of several regulatory proteins including glycogen synthase, MYB and the transcription factor JUN.

序列相似性 Belongs to the protein kinase superfamily. CMGC Ser/Thr protein kinase family. GSK-3 subfamily. Contains 1 protein kinase domain.

图片



All lanes : Anti-GSK3 alpha antibody [EP793Y] (ab40870) at 1/1000 dilution

- Lane 1 :** Wild-type HEK-293T (Human epithelial cell line from embryonic kidney transformed with large T antigen) whole cell lysate
- Lane 2 :** GSK3A knockout HEK-293T (Human epithelial cell line from embryonic kidney transformed with large T antigen) whole cell lysate
- Lane 3 :** HeLa (Human epithelial cell line from cervix adenocarcinoma) whole cell lysate
- Lane 4 :** HepG2 (Human liver hepatocellular carcinoma cell line) whole cell lysate

Lysates/proteins at 20 µg per lane.

Secondary

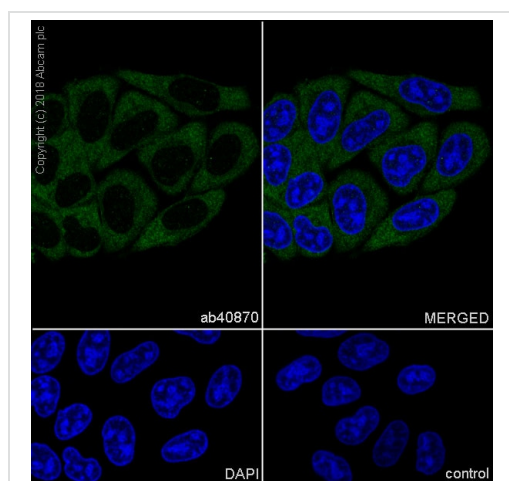
All lanes : Goat anti-Rabbit IgG H&L (IRDye® 800CW)
preadsorbed (**ab216773**) at 1/10000 dilution

Predicted band size: 51 kDa

Observed band size: 51 kDa

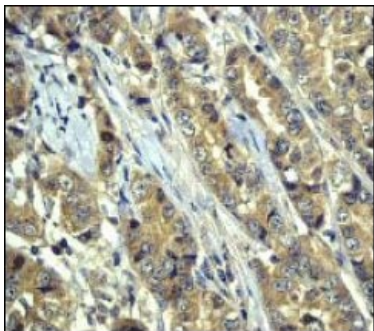
Lanes 1-4: Merged signal (red and green). Green - ab40870 observed at 51 kDa. Red - loading control **ab8245** observed at 36 kDa.

ab40870 Anti-GSK3 alpha antibody [EP793Y] was shown to specifically react with GSK3 alpha in wild-type HEK-293T cells. Loss of signal was observed when knockout cell line **ab266742** (knockout cell lysate **ab257979**) was used. Wild-type and GSK3 alpha knockout samples were subjected to SDS-PAGE. ab40870 and Anti-GAPDH antibody [6C5] - Loading Control (**ab8245**) were incubated overnight at 4°C at 1 in 1000 dilution and 1 in 20000 dilution respectively. Blots were developed with Goat anti-Rabbit IgG H&L (IRDye® 800CW) preadsorbed (**ab216773**) and Goat anti-Mouse IgG H&L (IRDye® 680RD) preadsorbed (**ab216776**) secondary antibodies at 1 in 20000 dilution for 1 hour at room temperature before imaging.



Immunocytochemistry/ Immunofluorescence analysis of HeLa (human cervix adenocarcinoma epithelial cell) cells labeling GSK3 alpha with purified ab40870 at 1/200 dilution (10 µg/mL). Cells were fixed in 100% Methanol. Goat anti rabbit IgG (Alexa Fluor® 488, **ab150077**) was used as the secondary antibody at 1/1000 (2 µg/mL) dilution. DAPI (blue) was used as nuclear counterstain.

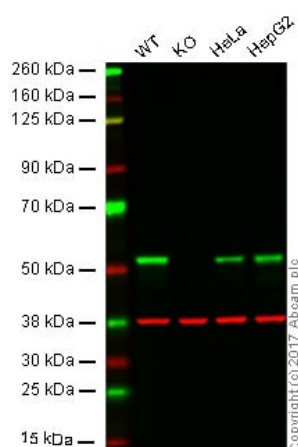
Immunocytochemistry/ Immunofluorescence - Anti-GSK3 alpha antibody [EP793Y] (ab40870)



Immunohistochemistry (Formalin/PFA-fixed paraffin-embedded sections) - Anti-GSK3 alpha antibody [EP793Y] (ab40870)

ab40870 at 1/50 dilution, staining GSK3 alpha in Human breast carcinoma tissue by Immunohistochemistry, Paraffin embedded section.

Perform heat mediated antigen retrieval with citrate buffer pH 6 before commencing with IHC staining protocol.



Western blot - Anti-GSK3 alpha antibody [EP793Y] (ab40870)

Lane 1: Wild-type HAP1 whole cell lysate (20 µg)

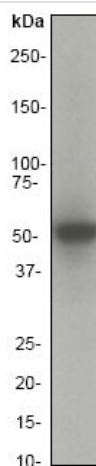
Lane 2: GSK3 alpha knockout HAP1 whole cell lysate (20 µg)

Lane 3: HeLa whole cell lysate (20 µg)

Lane 4: HepG2 whole cell lysate (20 µg)

Lanes 1 - 4: Merged signal (red and green). Green - ab40870 observed at 51 kDa. Red - loading control, **ab8245**, observed at 37 kDa.

ab40870 was shown to specifically react with GSK3 alpha in wild-type HAP1 cells. No band was observed when GSK3 alpha knockout samples were examined. Wild-type and GSK3 alpha knockout samples were subjected to SDS-PAGE. ab40870 and **ab8245** (Mouse anti-GAPDH loading control) were incubated overnight at 4°C at a 1/5000 dilution and 1/10,000 dilution respectively. Blots were developed with Goat anti-Rabbit IgG H&L (IRDye® 800CW) preabsorbed **ab216773** and Goat anti-Mouse IgG H&L (IRDye® 680RD) preabsorbed **ab216776** secondary antibodies at 1/10,000 dilution for 1 hour at room temperature before imaging.



Anti-GSK3 alpha antibody [EP793Y] (ab40870) at 1/5000 dilution + 10ug HeLa cell lysate.

Predicted band size: 51 kDa

Observed band size: 51 kDa

Western blot - Anti-GSK3 alpha antibody [EP793Y] (ab40870)

Why choose a recombinant antibody?



Research with confidence
Consistent and reproducible results



Long-term and scalable supply
Recombinant technology



Success from the first experiment
Confirmed specificity



Ethical standards compliant
Animal-free production

Anti-GSK3 alpha antibody [EP793Y] (ab40870)

Please note: All products are "FOR RESEARCH USE ONLY. NOT FOR USE IN DIAGNOSTIC PROCEDURES"

Our Abpromise to you: Quality guaranteed and expert technical support

- Replacement or refund for products not performing as stated on the datasheet
- Valid for 12 months from date of delivery
- Response to your inquiry within 24 hours
- We provide support in Chinese, English, French, German, Japanese and Spanish

- Extensive multi-media technical resources to help you
- We investigate all quality concerns to ensure our products perform to the highest standards

If the product does not perform as described on this datasheet, we will offer a refund or replacement. For full details of the Abpromise, please visit <https://www.abcam.cn/abpromise> or contact our technical team.

Terms and conditions

- Guarantee only valid for products bought direct from Abcam or one of our authorized distributors