


# Anti-Grp75/MOT antibody ab227215

## 7 图像

### 概述

产品名称	Anti-Grp75/MOT抗体
描述	兔多克隆抗体to Grp75/MOT
宿主	Rabbit
经测试应用	适用于: IP, IHC-P, WB, ICC/IF
种属反应性	与反应: Mouse, Rat, Human 预测可用于: Chicken, Cow, Xenopus laevis 
免疫原	Recombinant fragment within Human Grp75/MOT (internal sequence). The exact sequence is proprietary. Database link: <a href="#">P38646</a>
阳性对照	WB: HEK-293T, A431, HeLa, HepG2 and SCC-15 whole cell extract. IHC-P: Mouse duodenum tissue; rat duodenum and brain tissues. IP: HepG2 whole cell extract.
常规说明	<p>The Life Science industry has been in the grips of a reproducibility crisis for a number of years. Abcam is leading the way in addressing this with our range of recombinant monoclonal antibodies and knockout edited cell lines for gold-standard validation. Please check that this product meets your needs before purchasing.</p> <p>If you have any questions, special requirements or concerns, please send us an inquiry and/or contact our Support team ahead of purchase. Recommended alternatives for this product can be found below, along with publications, customer reviews and Q&amp;As</p>

### 性能

形式	Liquid
存放说明	Shipped at 4°C. Store at +4°C short term (1-2 weeks). Upon delivery aliquot. Store at -20°C long term. Avoid freeze / thaw cycle.
存储溶液	pH: 7.00 Preservative: 0.025% Proclin 300 Constituents: 78% PBS, 1% BSA, 20% Glycerol (glycerin, glycerine)
纯度	Immunogen affinity purified
克隆	多克隆
同种型	IgG

应用

**The Abpromise guarantee**      **Abpromise™**承诺保证使用ab227215于以下的经测试应用

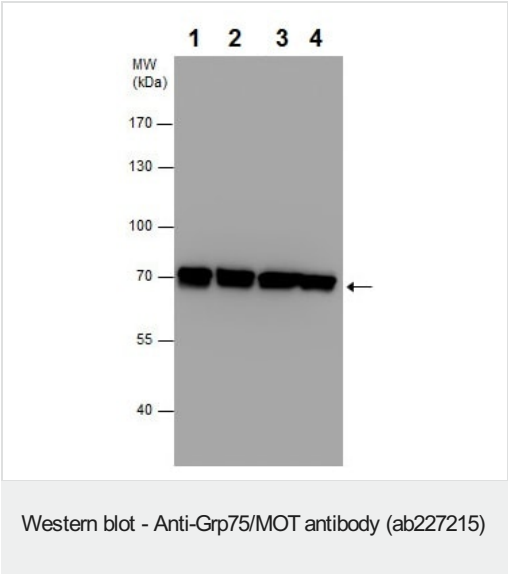
“应用说明”部分 下显示的仅为推荐的起始稀释度;实际最佳的稀释度/浓度应由使用者检定。

应用	Ab评论	说明
IP		1/100 - 1/500.
IHC-P		1/100 - 1/1000.
WB		1/500 - 1/3000. Predicted molecular weight: 74 kDa.
ICC/IF		1/500.

靶标

功能	Implicated in the control of cell proliferation and cellular aging. May also act as a chaperone.
序列相似性	Belongs to the heat shock protein 70 family.
翻译后修饰	Phosphorylated upon DNA damage, probably by ATM or ATR.
细胞定位	Mitochondrion.

图片



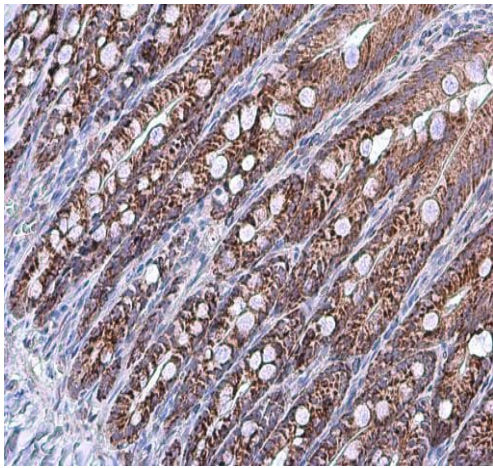
**All lanes :** Anti-Grp75/MOT antibody (ab227215) at 1/2500 dilution

- Lane 1 :** HEK-293T (human epithelial cell line from embryonic kidney transformed with large T antigen) whole cell extract
- Lane 2 :** A431 (human epidermoid carcinoma cell line) whole cell extract
- Lane 3 :** HeLa (human epithelial cell line from cervix adenocarcinoma) whole cell extract
- Lane 4 :** HepG2 (human liver hepatocellular carcinoma cell line) whole cell extract

Lysates/proteins at 30 µg per lane.

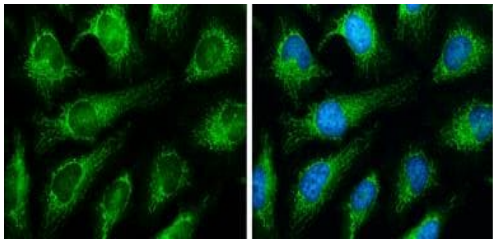
**Predicted band size:** 74 kDa

7.5% SDS-PAGE gel.



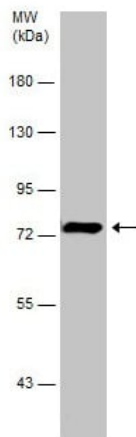
Immunohistochemistry (Formalin/PFA-fixed paraffin-embedded sections) - Anti-Grp75/MOT antibody (ab227215)

Paraffin-embedded rat duodenum tissue stained for Grp75/MOT using ab227215 at 1/500 dilution in immunohistochemical analysis.



Immunocytochemistry/ Immunofluorescence - Anti-Grp75/MOT antibody (ab227215)

Immunocytochemistry/ Immunofluorescence of HeLa cells staining Grp75/MOT with ab227215 (1/500). Hoechst 33342 staining. (blue).

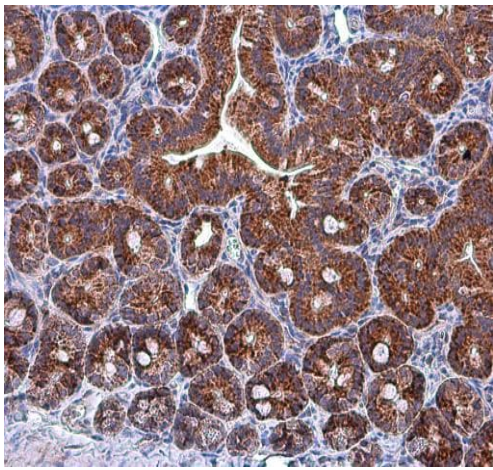


Western blot - Anti-Grp75/MOT antibody (ab227215)

Anti-Grp75/MOT antibody (ab227215) at 1/500 dilution + SCC-15 (Human squamous cell carcinoma, tongue) whole cell extract at 6  $\mu$ g

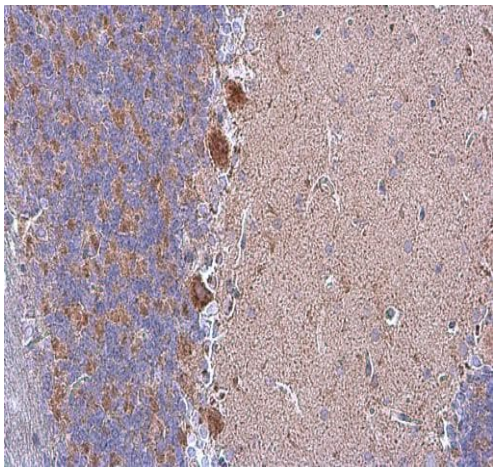
**Predicted band size:** 74 kDa

7.5% SDS-PAGE gel.



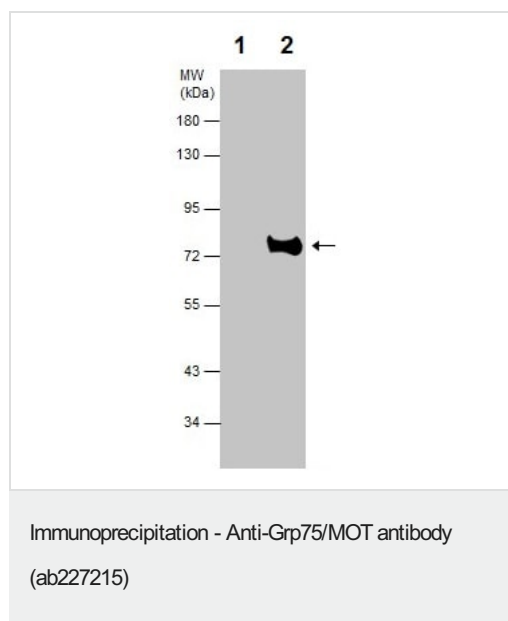
Immunohistochemistry (Formalin/PFA-fixed paraffin-embedded sections) - Anti-Grp75/MOT antibody (ab227215)

Paraffin-embedded mouse duodenum tissue stained for Grp75/MOT using ab227215 at 1/500 dilution in immunohistochemical analysis.



Immunohistochemistry (Formalin/PFA-fixed paraffin-embedded sections) - Anti-Grp75/MOT antibody (ab227215)

Paraffin-embedded rat brain tissue stained for Grp75/MOT using ab227215 at 1/500 dilution in immunohistochemical analysis.



Grp75/MOT was immunoprecipitated from HepG2 (human liver hepatocellular carcinoma cell line) whole cell extract with 5 µg of ab227215. Western blot was performed from the immunoprecipitate using ab227215. Anti-Rabbit IgG was used as secondary antibody.

**Lane 1:** Control IgG instead of ab227215 in HepG2 whole cell extract.

**Lane 2:** ab227215 IP in HepG2 whole cell extract.

**Please note:** All products are "FOR RESEARCH USE ONLY. NOT FOR USE IN DIAGNOSTIC PROCEDURES"

### Our Abpromise to you: Quality guaranteed and expert technical support

- Replacement or refund for products not performing as stated on the datasheet
- Valid for 12 months from date of delivery
- Response to your inquiry within 24 hours
- We provide support in Chinese, English, French, German, Japanese and Spanish
- Extensive multi-media technical resources to help you
- We investigate all quality concerns to ensure our products perform to the highest standards

If the product does not perform as described on this datasheet, we will offer a refund or replacement. For full details of the Abpromise, please visit <https://www.abcam.cn/abpromise> or contact our technical team.

### Terms and conditions

- Guarantee only valid for products bought direct from Abcam or one of our authorized distributors