

Anti-GRO alpha + GRO gamma + GRO beta antibody [EPR4902] ab124898

重组 RabMAb

1 References 2 图像

概述

| | |
|-------|---|
| 产品名称 | Anti-GRO alpha + GRO gamma + GRO beta抗体[EPR4902] |
| 描述 | 兔单克隆抗体[EPR4902] to CXCL1/GRO alpha + GRO gamma + GRO beta |
| 宿主 | Rabbit |
| 经测试应用 | 适用于: WB 不适用于: ICC/IF, IHC-P or IP |
| 种属反应性 | 与反应: Human |
| 免疫原 | Synthetic peptide within Human GRO alpha aa 50-150. The exact sequence is proprietary. |
| 阳性对照 | Human GRO alpha recombinant protein. |
| 常规说明 | <p>This product is a recombinant monoclonal antibody, which offers several advantages including:</p> <ul style="list-style-type: none">- High batch-to-batch consistency and reproducibility- Improved sensitivity and specificity- Long-term security of supply- Animal-free production <p>For more information see here.</p> <p>Our RabMAb[®] technology is a patented hybridoma-based technology for making rabbit monoclonal antibodies. For details on our patents, please refer to RabMAb[®] patents.</p> <p>Mouse, Rat: We have preliminary internal testing data to indicate this antibody may not react with these species. Please contact us for more information.</p> |

性能

| | |
|------|---|
| 形式 | Liquid |
| 存放说明 | Shipped at 4°C. Store at -20°C. Stable for 12 months at -20°C. |
| 存储溶液 | pH: 7.2 Preservative: 0.01% Sodium azide Constituents: 0.31% Sodium citrate, 0.175% Sodium chloride, 0.0172% EDTA disodium salt, 59% PBS, 40% Glycerol (glycerin, glycerine), 0.05% BSA |
| 纯度 | Protein A purified |

克隆 单克隆
 克隆编号 EPR4902
 同种型 IgG

应用

The Abpromise guarantee **Abpromise™**承诺保证使用ab124898于以下的经测试应用

“应用说明”部分 下显示的仅为推荐的起始稀释度;实际最佳的稀释度/浓度应由使用者检定。

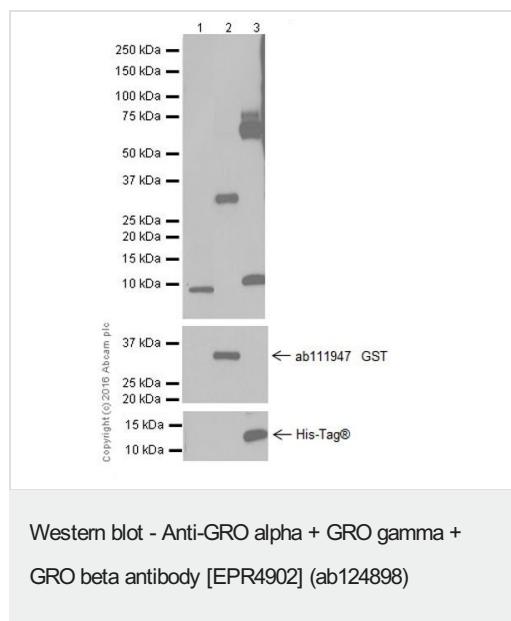
| 应用 | Ab评论 | 说明 |
|----|------|--|
| WB | | 1/10000 - 1/50000. Detects a band of approximately 8 kDa (predicted molecular weight: 11 kDa). |

应用说明 Is unsuitable for ICC/IF, IHC-P or IP.

靶标

细胞定位 CXCL1/GRO alpha: Secreted. GRO gamma: Secreted.

图片



All lanes : Anti-GRO alpha + GRO gamma + GRO beta antibody [EPR4902] (ab124898) at 1/2000 dilution

Lane 1 : Human GRO alpha active protein

Lane 2 : Human GRO beta fragment recombinant protein

Lane 3 : Human GRO gamma fragment recombinant protein

Lysates/proteins at 10 µg per lane.

Secondary

All lanes : Goat Anti-Rabbit IgG (H+L), Peroxidase conjugated at 1/100000 dilution

Predicted band size: 11 kDa

Observed band size: 10,36,10 kDa

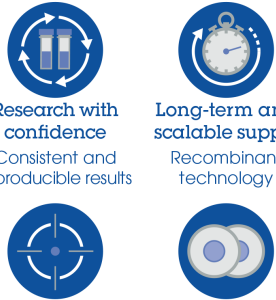
Exposure time: 3 minutes

Blocking buffer and concentration: 5% NFDm/TBST

Diluting buffer and concentration: 5% NFDm/TBST

Human GRO beta fragment protein contain aa35-107 with a GST-Tag. Human GRO gamma fragment recombinant protein contain aa35-107 with a His-Tag.

Why choose a recombinant antibody?



- Research with confidence**
Consistent and reproducible results
- Long-term and scalable supply**
Recombinant technology
- Success from the first experiment**
Confirmed specificity
- Ethical standards compliant**
Animal-free production

Anti-GRO alpha + GRO gamma + GRO beta antibody [EPR4902] (ab124898)

Please note: All products are "FOR RESEARCH USE ONLY. NOT FOR USE IN DIAGNOSTIC PROCEDURES"

Our Abpromise to you: Quality guaranteed and expert technical support

- Replacement or refund for products not performing as stated on the datasheet
- Valid for 12 months from date of delivery
- Response to your inquiry within 24 hours
- We provide support in Chinese, English, French, German, Japanese and Spanish
- Extensive multi-media technical resources to help you
- We investigate all quality concerns to ensure our products perform to the highest standards

If the product does not perform as described on this datasheet, we will offer a refund or replacement. For full details of the Abpromise, please visit <https://www.abcam.cn/abpromise> or contact our technical team.

Terms and conditions

- Guarantee only valid for products bought direct from Abcam or one of our authorized distributors