


Anti-GRK2 antibody - C-terminal ab137666

[3 References](#) [4 图像](#)

概述

产品名称	Anti-GRK2抗体- C-terminal
描述	兔多克隆抗体to GRK2 - C-terminal
宿主	Rabbit
经测试应用	适用于: WB, ICC/IF, IHC-P
种属反应性	与反应: Mouse, Human 预测可用于: Rat, Chicken, Cow 
免疫原	Synthetic peptide, corresponding to a region within C terminal amino acids 477-689 of Human GRK2.
阳性对照	293T, A431, HeLaS3, HepG2, and Raji cell lines. OVCAR3 xenograft; methanol-fixed HeLa; NIH-3T3 and MOLT4 whole cell lysate.
常规说明	<p>The Life Science industry has been in the grips of a reproducibility crisis for a number of years. Abcam is leading the way in addressing this with our range of recombinant monoclonal antibodies and knockout edited cell lines for gold-standard validation. Please check that this product meets your needs before purchasing.</p> <p>If you have any questions, special requirements or concerns, please send us an inquiry and/or contact our Support team ahead of purchase. Recommended alternatives for this product can be found below, along with publications, customer reviews and Q&As</p>

性能

形式	Liquid
存放说明	Shipped at 4°C. Upon delivery aliquot. Store at -20°C or -80°C. Avoid freeze / thaw cycle.
存储溶液	pH: 7.00 Preservative: 0.025% Proclin 300 Constituents: 79% PBS, 20% Glycerol (glycerin, glycerine)
纯度	Immunogen affinity purified
克隆	多克隆
同种型	IgG

应用

The Abpromise guarantee

Abpromise™ 承诺保证使用 ab137666 于以下的经测试应用

“应用说明”部分 下显示的仅为推荐的起始稀释度;实际最佳的稀释度/浓度应由使用者检定。

应用	Ab评论	说明
WB		1/500 - 1/3000. Predicted molecular weight: 80 kDa.
ICC/IF		1/100 - 1/1000.
IHC-P		1/100 - 1/1000. Perform heat mediated antigen retrieval with citrate buffer pH 6 before commencing with IHC staining protocol. Alternatively Tris-EDTA buffer (pH8.0) may be used.

靶标

功能

Specifically phosphorylates the agonist-occupied form of the beta-adrenergic and closely related receptors, probably inducing a desensitization of them. Key regulator of LPAR1 signaling. Competes with RALA for binding to LPAR1 thus affecting the signaling properties of the receptor. Desensitizes LPAR1 and LPAR2 in a phosphorylation-independent manner.

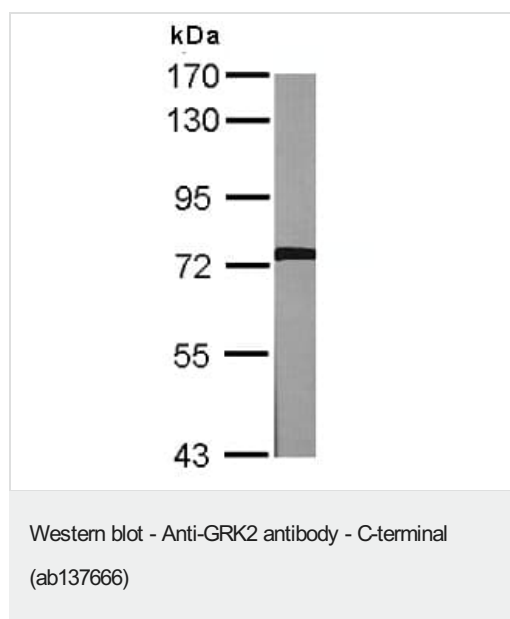
组织特异性

Expressed in peripheral blood leukocytes.

序列相似性

Belongs to the protein kinase superfamily. AGC Ser/Thr protein kinase family. GPRK subfamily. Contains 1 AGC-kinase C-terminal domain. Contains 1 PH domain. Contains 1 protein kinase domain. Contains 1 RGS domain.

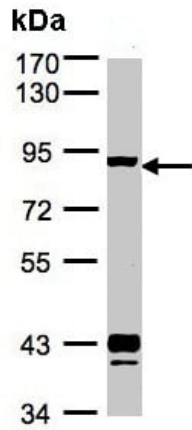
图片



Anti-GRK2 antibody - C-terminal (ab137666) at 1/1000 dilution + NIH3T3 whole cell lysate at 30 µg

Predicted band size: 80 kDa

7.5% SDS PAGE

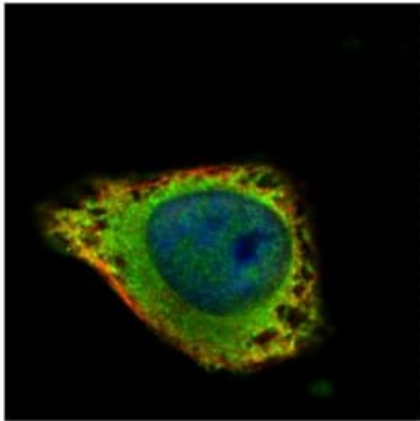


Western blot - Anti-GRK2 antibody - C-terminal (ab137666)

Anti-GRK2 antibody - C-terminal (ab137666) at 1/1000 dilution + MOLT4 whole cell lysate at 30 μ g

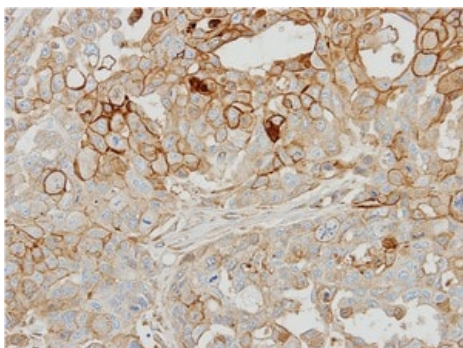
Predicted band size: 80 kDa

7.5% SDS PAGE



Immunocytochemistry/ Immunofluorescence - Anti-GRK2 antibody - C-terminal (ab137666)

Confocal immunofluorescence analysis of methanol-fixed HeLa cells, labelling GRK2 (Green) with ab137666 at 1/100 dilution. Alpha-tubulin filaments were also labelled (Red).



Immunohistochemistry (Formalin/PFA-fixed paraffin-embedded sections) - Anti-GRK2 antibody - C-terminal (ab137666)

Immunohistochemical analysis of paraffin-embedded OVCAR3 xenograft labelling GRK2 with ab 137666 at 1/500 dilution.

Please note: All products are "FOR RESEARCH USE ONLY. NOT FOR USE IN DIAGNOSTIC PROCEDURES"

Our Abpromise to you: Quality guaranteed and expert technical support

- Replacement or refund for products not performing as stated on the datasheet
- Valid for 12 months from date of delivery
- Response to your inquiry within 24 hours

- We provide support in Chinese, English, French, German, Japanese and Spanish
- Extensive multi-media technical resources to help you
- We investigate all quality concerns to ensure our products perform to the highest standards

If the product does not perform as described on this datasheet, we will offer a refund or replacement. For full details of the Abpromise, please visit <https://www.abcam.cn/abpromise> or contact our technical team.

Terms and conditions

- Guarantee only valid for products bought direct from Abcam or one of our authorized distributors