


### Anti-GRB2 antibody ab2234

★★★★★ [1 Abreviews](#) [1 References](#) [5 图像](#)

#### 概述

产品名称	Anti-GRB2抗体
描述	山羊多克隆抗体to GRB2
宿主	Goat
经测试应用	适用于: IHC-P, WB
种属反应性	与反应: Mouse, Rat, Human, Pig 预测可用于: Cow, Dog 
免疫原	Synthetic peptide corresponding to Human GRB2 aa 206-217 (C terminal). Sequence: C-PRNYVTPVNRNV  (Peptide available as <a href="#">ab22873</a> ) <a href="#">Run BLAST with</a> <a href="#">Run BLAST with</a>
阳性对照	Recombinant Human GRB2 protein ( <a href="#">ab85917</a> ) can be used as a positive control in WB. WB: MOLT4 cell lysate, mouse, rat, human and pig spleen, mouse and rat brain, and human thymus tissue lysates. IHC-P: Human lymph node tissue.
常规说明	Principal Names - GRB2; growth factor receptor-bound protein 2 Official Gene Symbol - GRB2. GenBank Accession Number – NP_002077. LocusLink ID - 2885. Gene Ontology terms - cell-cell signalling; SH3/SH2 adaptor protein; EGF receptor signalling pathway; RAS protein signal transduction; cell shape and cell size control.  The Life Science industry has been in the grips of a reproducibility crisis for a number of years. Abcam is leading the way in addressing this with our range of recombinant monoclonal antibodies and knockout edited cell lines for gold-standard validation. Please check that this product meets your needs before purchasing.  If you have any questions, special requirements or concerns, please send us an inquiry and/or contact our Support team ahead of purchase. Recommended alternatives for this product can be found below, along with publications, customer reviews and Q&As

#### 性能

形式	Liquid
存放说明	Shipped at 4°C. Upon delivery aliquot and store at -20°C or -80°C. Avoid repeated freeze / thaw cycles.

<b>存储溶液</b>	pH: 7.30 Preservative: 0.02% Sodium azide Constituents: 0.05% Tris, 0.5% BSA
<b>纯度</b>	Immunogen affinity purified
<b>纯化说明</b>	Purified from goat serum by ammonium sulphate precipitation followed by antigen affinity chromatography using the immunizing peptide.
<b>克隆</b>	多克隆
<b>同种型</b>	IgG

## 应用

**The Abpromise guarantee**      **Abpromise™**承诺保证使用ab2234于以下的经测试应用

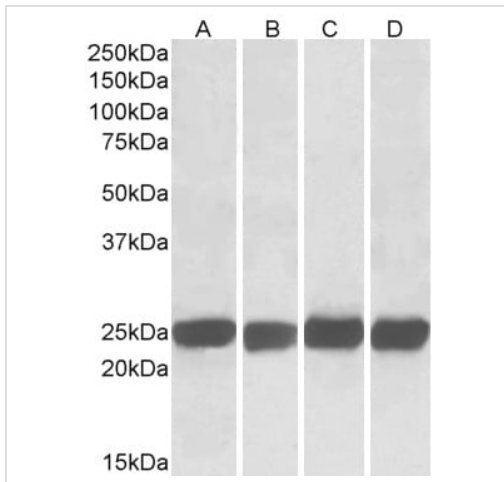
“应用说明”部分下显示的仅为推荐的起始稀释度;实际最佳的稀释度/浓度应由使用者检定。

应用	Ab评论	说明
<b>IHC-P</b>		Use a concentration of 1 - 2 µg/ml. In paraffin embedded Human Tonsil, stains mantle zone and to a lesser extent germinal centre.
<b>WB</b>	★★★★★ (1)	Use a concentration of 0.05 - 0.15 µg/ml. Predicted molecular weight: 30 kDa. A 1 hour primary incubation is recommended for this product.

## 靶标

<b>功能</b>	Adapter protein that provides a critical link between cell surface growth factor receptors and the Ras signaling pathway. Isoform GRB3-3 does not bind to phosphorylated epidermal growth factor receptor (EGFR) but inhibits EGF-induced transactivation of a RAS-responsive element. Isoform GRB3-3 acts as a dominant negative protein over GRB2 and by suppressing proliferative signals, may trigger active programmed cell death.
<b>序列相似性</b>	Belongs to the GRB2/sem-5/DRK family. Contains 1 SH2 domain. Contains 2 SH3 domains.
<b>结构域</b>	The SH3 domains mediate interaction with RALGPS1 and SHB.
<b>细胞定位</b>	Golgi apparatus.

## 图片



Western blot - Anti-GRB2 antibody (ab2234)

**All lanes :** Anti-GRB2 antibody (ab2234) at 0.05  $\mu\text{g/ml}$

**Lane 1 :** Mouse brain tissue lysate in RIPA buffer

**Lane 2 :** Rat brain tissue lysate in RIPA buffer

**Lane 3 :** Mouse spleen tissue lysate in RIPA buffer

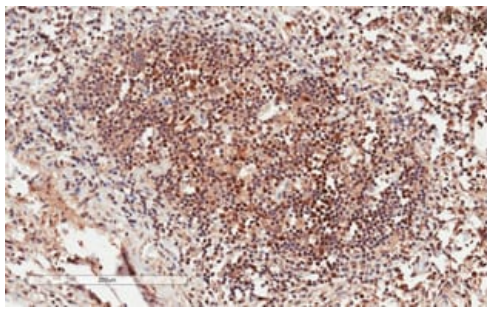
**Lane 4 :** Rat spleen tissue lysate in RIPA buffer

Lysates/proteins at 35  $\mu\text{g}$  per lane.

**Predicted band size:** 30 kDa

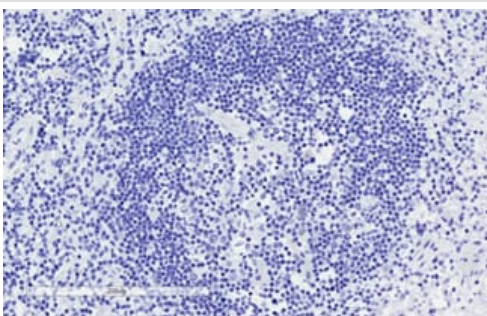
**Observed band size:** 26 kDa

Primary incubation for 1 hour. Detected using chemiluminescence.



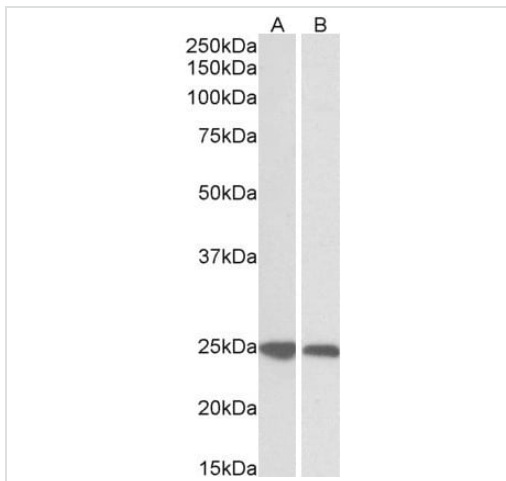
Immunohistochemistry (Formalin/PFA-fixed paraffin-embedded sections) - Anti-GRB2 antibody (ab2234)

ab2234 (1  $\mu\text{g/ml}$ ) staining of paraffin embedded Human Lymph Node tissue. Microwaved antigen retrieval with citrate buffer pH 6, HRP-staining.



Immunohistochemistry (Formalin/PFA-fixed paraffin-embedded sections) - Anti-GRB2 antibody (ab2234)

ab2234 negative control showing staining of paraffin embedded Human Lymph Node tissue, with no primary antibody.



Western blot - Anti-GRB2 antibody (ab2234)

**All lanes :** Anti-GRB2 antibody (ab2234) at 0.05 µg/ml

**Lane 1 :** Human spleen tissue lysate in RIPA buffer

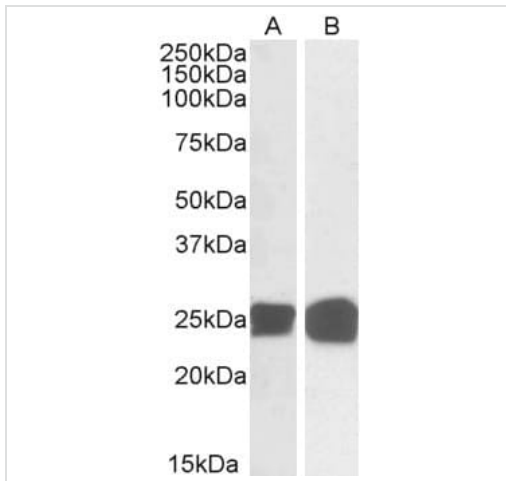
**Lane 2 :** Pig spleen tissue lysate in RIPA buffer

Lysates/proteins at 35 µg per lane.

**Predicted band size:** 30 kDa

**Observed band size:** 26 kDa

Primary incubation for 1 hour. Detected using chemiluminescence.



Western blot - Anti-GRB2 antibody (ab2234)

**Lane 1 :** Anti-GRB2 antibody (ab2234) at 0.05 µg/ml

**Lane 2 :** Anti-GRB2 antibody (ab2234) at 0.05 µg

**Lane 1 :** Human thymus tissue lysate in RIPA buffer

**Lane 2 :** MOLT4 cell lysate in RIPA buffer

Lysates/proteins at 35 µg per lane.

**Predicted band size:** 30 kDa

**Observed band size:** 26 kDa

Primary incubation for 1 hour. Detected using chemiluminescence.

**Please note:** All products are "FOR RESEARCH USE ONLY. NOT FOR USE IN DIAGNOSTIC PROCEDURES"

### Our Abpromise to you: Quality guaranteed and expert technical support

- Replacement or refund for products not performing as stated on the datasheet
- Valid for 12 months from date of delivery
- Response to your inquiry within 24 hours
- We provide support in Chinese, English, French, German, Japanese and Spanish
- Extensive multi-media technical resources to help you
- We investigate all quality concerns to ensure our products perform to the highest standards

If the product does not perform as described on this datasheet, we will offer a refund or replacement. For full details of the Abpromise, please visit <https://www.abcam.cn/abpromise> or contact our technical team.

## Terms and conditions

---

- Guarantee only valid for products bought direct from Abcam or one of our authorized distributors