

# Anti-GRB10 antibody ab125583

★★★★☆ [4 Abreviews](#) [2 References](#) [1 图像](#)

### 概述

---

<b>产品名称</b>	Anti-GRB10抗体
<b>描述</b>	兔多克隆抗体to GRB10
<b>宿主</b>	Rabbit
<b>特异性</b>	At least three isoforms of GRB10 are known to exist; ab125583 will detect all three isoforms.
<b>经测试应用</b>	<b>适用于:</b> WB
<b>种属反应性</b>	<b>与反应:</b> Human
<b>免疫原</b>	Synthetic peptide corresponding to 17 amino acids near the C terminus of Human GRB10 (NP_005302).
<b>阳性对照</b>	WB: SK-N-SH cell lysate.
<b>常规说明</b>	<p>The Life Science industry has been in the grips of a reproducibility crisis for a number of years. Abcam is leading the way in addressing this with our range of recombinant monoclonal antibodies and knockout edited cell lines for gold-standard validation. Please check that this product meets your needs before purchasing.</p> <p>If you have any questions, special requirements or concerns, please send us an inquiry and/or contact our Support team ahead of purchase. Recommended alternatives for this product can be found below, along with publications, customer reviews and Q&amp;As</p>

### 性能

---

<b>形式</b>	Liquid
<b>存放说明</b>	Shipped at 4°C. Upon delivery aliquot and store at -20°C. Avoid repeated freeze / thaw cycles.
<b>存储溶液</b>	pH: 7.2 Preservative: 0.02% Sodium azide Constituent: 99% PBS
<b>纯度</b>	Immunogen affinity purified
<b>克隆</b>	多克隆
<b>同种型</b>	IgG

### 应用

---

## The Abpromise guarantee

**Abpromise™**承诺保证使用ab125583于以下的经测试应用

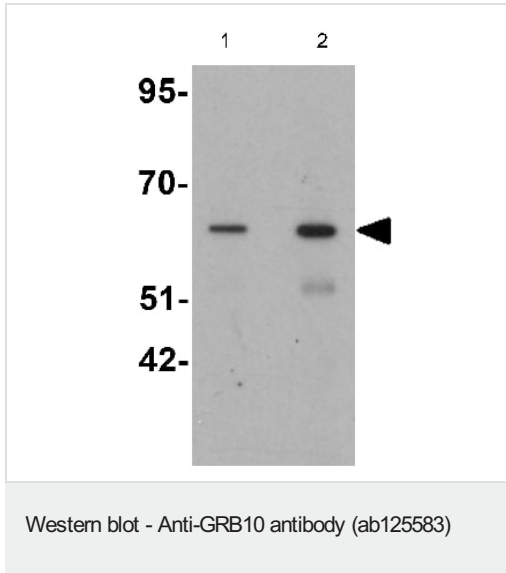
“应用说明”部分下显示的仅为推荐的起始稀释度;实际最佳的稀释度/浓度应由使用者检定。

应用	Ab评论	说明
WB	★★★★☆ (2)	Use a concentration of 1 - 2 µg/ml. Predicted molecular weight: 67 kDa.

## 靶标

<b>功能</b>	Adapter protein which modulates coupling of a number of cell surface receptor kinases with specific signaling pathways. Binds to, and suppress signals from, activated receptors tyrosine kinases, including the insulin (INSR) and insulin-like growth factor (IGF1R) receptors. The inhibitory effect can be achieved by 2 mechanisms: interference with the signaling pathway and increased receptor degradation. Delays and reduces AKT1 phosphorylation in response to insulin stimulation. Blocks association between INSR and IRS1 and IRS2 and prevents insulin-stimulated IRS1 and IRS2 tyrosine phosphorylation. Recruits NEDD4 to IGF1R, leading to IGF1R ubiquitination, increased internalization and degradation by both the proteasomal and lysosomal pathways. May play a role in mediating insulin-stimulated ubiquitination of INSR, leading to proteasomal degradation. Negatively regulates Wnt signaling by interacting with LRP6 intracellular portion and interfering with the binding of AXIN1 to LRP6. Positive regulator of the KDR/VEGFR-2 signaling pathway. May inhibit NEDD4-mediated degradation of KDR/VEGFR-2.
<b>组织特异性</b>	Widely expressed in fetal and adult tissues, including fetal and postnatal liver, lung, kidney, skeletal muscle, heart, spleen, skin and brain.
<b>序列相似性</b>	Belongs to the GRB7/10/14 family. Contains 1 PH domain. Contains 1 Ras-associating domain. Contains 1 SH2 domain.
<b>结构域</b>	The PH domain binds relatively non-specifically to several phosphoinositides, including PI(5)P, PI(4,5)P2, PI(3,4)P2 and PI(3,4,5)P3, with modest affinities.
<b>翻译后修饰</b>	phosphorylated on serine residues upon EGF, FGF and PDGF stimulation.
<b>细胞定位</b>	Cytoplasm. When complexed with NEDD4 and IGF1R, follows IGF1R internalization, remaining associated with early endosomes. Uncouples from IGF1R-containing endosomes before the sorting of the receptor to the lysosomal compartment.

## 图片



**Lane 1** : Anti-GRB10 antibody (ab125583) at 1 µg/ml

**Lane 2** : Anti-GRB10 antibody (ab125583) at 2 µg/ml

**All lanes** : SK-N-SH cell lysate

Lysates/proteins at 15 µg per lane.

**Predicted band size:** 67 kDa

Secondary antibody - anti-rabbit HRP ([ab6721](#))

**Please note:** All products are "FOR RESEARCH USE ONLY. NOT FOR USE IN DIAGNOSTIC PROCEDURES"

### Our Abpromise to you: Quality guaranteed and expert technical support

- Replacement or refund for products not performing as stated on the datasheet
- Valid for 12 months from date of delivery
- Response to your inquiry within 24 hours
- We provide support in Chinese, English, French, German, Japanese and Spanish
- Extensive multi-media technical resources to help you
- We investigate all quality concerns to ensure our products perform to the highest standards

If the product does not perform as described on this datasheet, we will offer a refund or replacement. For full details of the Abpromise, please visit <https://www.abcam.cn/abpromise> or contact our technical team.

### Terms and conditions

- Guarantee only valid for products bought direct from Abcam or one of our authorized distributors