

Anti-Granzyme B antibody [CLB-GB11] ab103159

[3 References](#) [2 图像](#)

概述

产品名称	Anti-Granzyme B抗体[CLB-GB11]
描述	小鼠单克隆抗体[CLB-GB11] to Granzyme B
宿主	Mouse
经测试应用	适用于: Flow Cyt (Intra)
种属反应性	与反应: Human
免疫原	Full length native protein (purified) corresponding to Human Granzyme B. Database link: P10144
阳性对照	Flow Cyt: human peripheral whole blood
常规说明	<p>The Life Science industry has been in the grips of a reproducibility crisis for a number of years. Abcam is leading the way in addressing this with our range of recombinant monoclonal antibodies and knockout edited cell lines for gold-standard validation. Please check that this product meets your needs before purchasing.</p> <p>If you have any questions, special requirements or concerns, please send us an inquiry and/or contact our Support team ahead of purchase. Recommended alternatives for this product can be found below, along with publications, customer reviews and Q&As</p>

性能

形式	Liquid
存放说明	Shipped at 4°C. Store at +4°C short term (1-2 weeks). Store at -20°C long term.
存储溶液	pH: 8.0 Preservative: 0.097% Sodium azide Constituent: Tris buffered saline
纯度	Protein A purified
纯化说明	Purified from cell culture supernatant. Purity > 95% (by SDS-PAGE)
克隆	单克隆
克隆编号	CLB-GB11
同种型	IgG1

The Abpromise guarantee **Abpromise™**承诺保证使用ab103159于以下的经测试应用

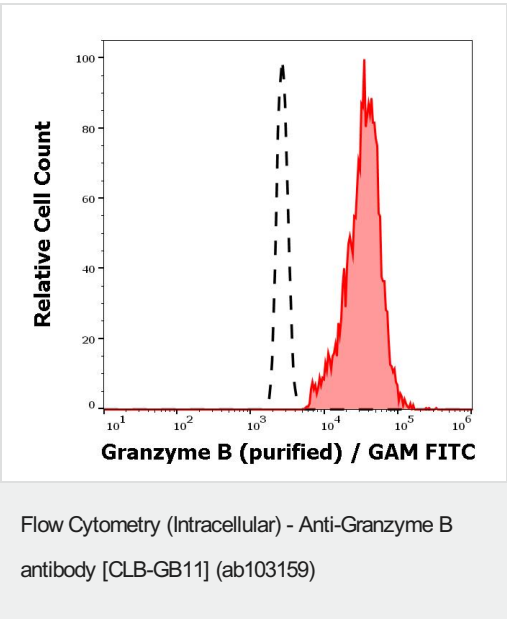
“应用说明”部分 下显示的仅为推荐的起始稀释度;实际最佳的稀释度/浓度应由使用者检定。

应用	Ab评论	说明
Flow Cyt (Intra)		Use a concentration of 1 - 4 µg/ml.

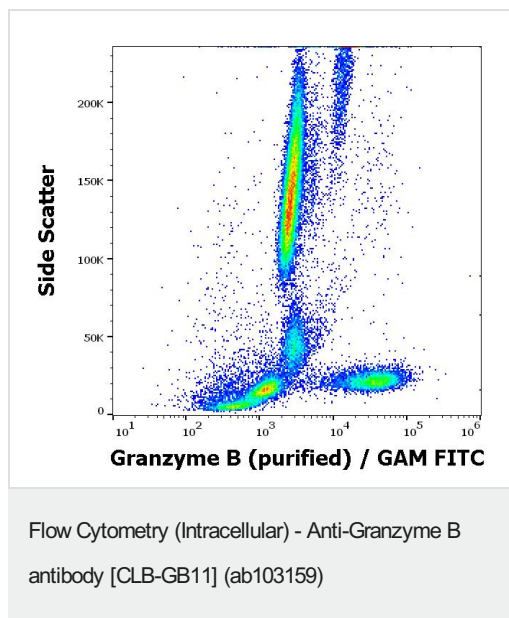
靶标

功能	This enzyme is necessary for target cell lysis in cell-mediated immune responses. It cleaves after Asp. Seems to be linked to an activation cascade of caspases (aspartate-specific cysteine proteases) responsible for apoptosis execution. Cleaves caspase-3, -7, -9 and 10 to give rise to active enzymes mediating apoptosis.
序列相似性	Belongs to the peptidase S1 family. Granzyme subfamily. Contains 1 peptidase S1 domain.
细胞定位	Cytoplasmic granule. Cytoplasmic granules of cytolytic T-lymphocytes and natural killer cells.

图片



Separation of Granzyme B positive lymphocytes (red-filled) from neutrophil granulocytes (black-dashed) in flow cytometry analysis (intracellular staining) of human peripheral whole blood using ab103159 at 3 µg/ml.



Flow cytometry intracellular staining pattern of human peripheral whole blood stained using ab103159 at 3 µg/ml.

Please note: All products are "FOR RESEARCH USE ONLY. NOT FOR USE IN DIAGNOSTIC PROCEDURES"

Our Abpromise to you: Quality guaranteed and expert technical support

- Replacement or refund for products not performing as stated on the datasheet
- Valid for 12 months from date of delivery
- Response to your inquiry within 24 hours
- We provide support in Chinese, English, French, German, Japanese and Spanish
- Extensive multi-media technical resources to help you
- We investigate all quality concerns to ensure our products perform to the highest standards

If the product does not perform as described on this datasheet, we will offer a refund or replacement. For full details of the Abpromise, please visit <https://www.abcam.cn/abpromise> or contact our technical team.

Terms and conditions

- Guarantee only valid for products bought direct from Abcam or one of our authorized distributors