


Anti-Granzyme B antibody ab4059

★★★★★ [21 Abreviews](#) [146 References](#) [2 图像](#)

概述

产品名称	Anti-Granzyme B抗体
描述	兔多克隆抗体to Granzyme B
宿主	Rabbit
特异性	The immunogen used for this product shares 94% homology with Granzyme H. Cross-reactivity with this protein has not been confirmed experimentally.
经测试应用	适用于: IHC-P
种属反应性	与反应: Human 预测可用于: Mouse, Rat, Pig, Common marmoset 
免疫原	Synthetic peptide. This information is proprietary to Abcam and/or its suppliers.
常规说明	This product is FOR RESEARCH USE ONLY. For commercial use, please contact partnerships@abcam.com. The Life Science industry has been in the grips of a reproducibility crisis for a number of years. Abcam is leading the way in addressing this with our range of recombinant monoclonal antibodies and knockout edited cell lines for gold-standard validation. Please check that this product meets your needs before purchasing. If you have any questions, special requirements or concerns, please send us an inquiry and/or contact our Support team ahead of purchase. Recommended alternatives for this product can be found below, along with publications, customer reviews and Q&As

性能

形式	Liquid
存放说明	Shipped at 4°C. Upon delivery aliquot and store at -20°C. Avoid freeze / thaw cycles.
存储溶液	pH: 7.60 Preservative: 0.1% Sodium azide Constituents: PBS, 1% BSA
纯度	Immunogen affinity purified
克隆	多克隆
同种型	IgG

应用

The Abpromise guarantee **Abpromise™**承诺保证使用ab4059于以下的经测试应用

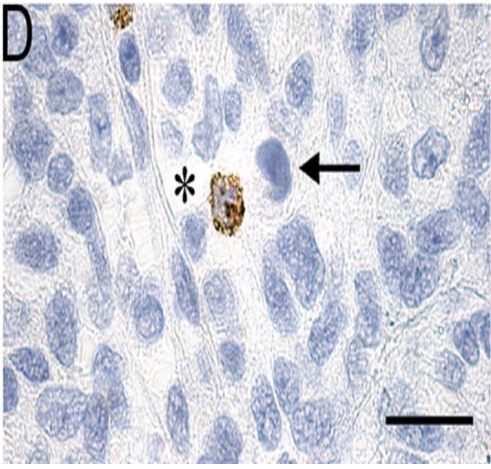
“应用说明”部分 下显示的仅为推荐的起始稀释度;实际最佳的稀释度/浓度应由使用者检定。

应用	Ab评论	说明
IHC-P	★★★★★ (20)	1/100. Perform heat mediated antigen retrieval before commencing with IHC staining protocol.

靶标

功能	This enzyme is necessary for target cell lysis in cell-mediated immune responses. It cleaves after Asp. Seems to be linked to an activation cascade of caspases (aspartate-specific cysteine proteases) responsible for apoptosis execution. Cleaves caspase-3, -7, -9 and 10 to give rise to active enzymes mediating apoptosis.
序列相似性	Belongs to the peptidase S1 family. Granzyme subfamily. Contains 1 peptidase S1 domain.
细胞定位	Cytoplasmic granule. Cytoplasmic granules of cytolytic T-lymphocytes and natural killer cells.

图片

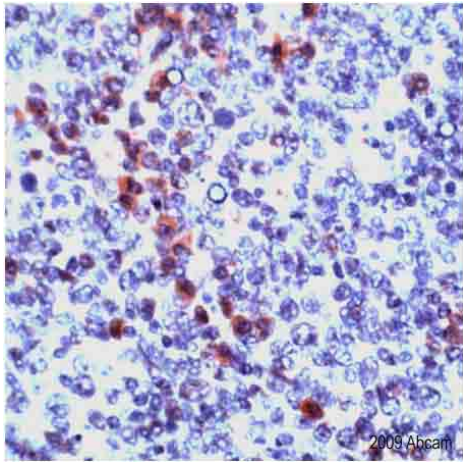


Immunohistochemistry (Formalin/PFA-fixed paraffin-embedded sections) - Anti-Granzyme B antibody (ab4059)

Huszthy et al PLoS One. 2015 Aug 20;10(8):e0136089. doi: 10.1371/journal.pone.0136089. eCollection 2015. Fig 5. Reproduced under the Creative Commons license <http://creativecommons.org/licenses/by/4.0/>

Cytotoxic effector cells and regulatory T cells in human glioblastoma xenograft growing in immunocompetent rats.

Granzyme B-positive cytotoxic cells (ab4059 at a 1/75 dilution) in a GBM xenograft with rejection. Asterisks mark tissue lysed by effector cells.



Human tonsil tissue stained with anti-Granzyme B antibody (ab4059).

Immunohistochemistry (Formalin/PFA-fixed paraffin-embedded sections) - Anti-Granzyme B antibody (ab4059)

Please note: All products are "FOR RESEARCH USE ONLY. NOT FOR USE IN DIAGNOSTIC PROCEDURES"

Our Abpromise to you: Quality guaranteed and expert technical support

- Replacement or refund for products not performing as stated on the datasheet
- Valid for 12 months from date of delivery
- Response to your inquiry within 24 hours
- We provide support in Chinese, English, French, German, Japanese and Spanish
- Extensive multi-media technical resources to help you
- We investigate all quality concerns to ensure our products perform to the highest standards

If the product does not perform as described on this datasheet, we will offer a refund or replacement. For full details of the Abpromise, please visit <https://www.abcam.cn/abpromise> or contact our technical team.

Terms and conditions

- Guarantee only valid for products bought direct from Abcam or one of our authorized distributors