

# Anti-Granulocytes antibody [SPM250] ab75701

**1 References**   **1 图像**

### 概述

产品名称	Anti-Granulocytes抗体[SPM250]
描述	小鼠单克隆抗体[SPM250] to Granulocytes
宿主	Mouse
特异性	ab75701 reacts with early precursor and mature forms of human myeloid cells. We have data to indicate that this antibody may not cross react with Rat. However, this has not been conclusively tested and expression levels may vary in certain cell lines/tissues.
经测试应用	适用于: IHC-P
种属反应性	与反应: Human
免疫原	Tissue, cells or virus corresponding to Human Granulocytes. Nuclei from pokeweed mitogen stimulated peripheral blood lymphocytes.
阳性对照	Human tonsil or lymph node tissue
常规说明	<p>ab75701 can be useful for the detection of myeloid leukemias and granulocytic sarcomas and also can be used as a marker of granulocytes in normal tissues or inflammatory processes.</p> <p>The Life Science industry has been in the grips of a reproducibility crisis for a number of years. Abcam is leading the way in addressing this with our range of recombinant monoclonal antibodies and knockout edited cell lines for gold-standard validation. Please check that this product meets your needs before purchasing.</p> <p>If you have any questions, special requirements or concerns, please send us an inquiry and/or contact our Support team ahead of purchase. Recommended alternatives for this product can be found below, along with publications, customer reviews and Q&amp;As</p>

### 性能

形式	Liquid
存放说明	Shipped at 4°C. Upon delivery aliquot and store at -20°C. Avoid freeze / thaw cycles.
存储溶液	<p>pH: 7.2</p> <p>Preservative: 0.09% Sodium azide</p> <p>Constituents: BSA, 0.0268% PBS</p>
纯度	Protein G purified

Primary antibody说明	ab75701 can be useful for the detection of myeloid leukemias and granulocytic sarcomas and also can be used as a marker of granulocytes in normal tissues or inflammatory processes.
克隆	单克隆
克隆编号	SPM250
同种型	IgG1
轻链类型	kappa

应用

The Abpromise guarantee      **Abpromise™**承诺保证使用ab75701于以下的经测试应用

“应用说明”部分 下显示的仅为推荐的起始稀释度;实际最佳的稀释度/浓度应由使用者检定。

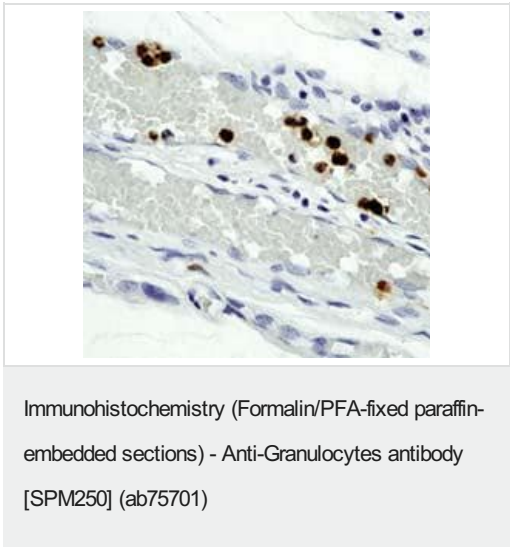
应用	Ab评论	说明
IHC-P		1/50.

靶标

相关性

Granulocytes are a type of white blood cell filled with microscopic granules that are little sacs containing enzymes, compounds that digest microorganisms. They are part of the innate immune system and have somewhat nonspecific, broad-based activity. They do not respond exclusively to specific antigens, as do B-cells and T-cells. Neutrophils, eosinophils and basophils are all types of granulocytes. They are named by the staining features of their granules in the laboratory: Neutrophils have "neutral" subtle granules; Eosinophils have prominent granules that stain readily with the acid dye eosin; and Basophils have prominent granules that stain readily basic (non acidic) dyes.

图片



ab75701, at a 1/50 dilution, staining Granulocytes in human tonsil tissue by Immunohistochemistry.

Please note: All products are "FOR RESEARCH USE ONLY. NOT FOR USE IN DIAGNOSTIC PROCEDURES"

### **Our Abpromise to you: Quality guaranteed and expert technical support**

---

- Replacement or refund for products not performing as stated on the datasheet
- Valid for 12 months from date of delivery
- Response to your inquiry within 24 hours
  
- We provide support in Chinese, English, French, German, Japanese and Spanish
- Extensive multi-media technical resources to help you
- We investigate all quality concerns to ensure our products perform to the highest standards

If the product does not perform as described on this datasheet, we will offer a refund or replacement. For full details of the Abpromise, please visit <https://www.abcam.cn/abpromise> or contact our technical team.

### **Terms and conditions**

---

- Guarantee only valid for products bought direct from Abcam or one of our authorized distributors