

Anti-Grainyhead-like protein 1 homolog antibody ab111582

2 图像

概述

产品名称	Anti-Grainyhead-like蛋白1 homolog抗体
描述	兔多克隆抗体to Grainyhead-like蛋白1 homolog
宿主	Rabbit
经测试应用	适用于: WB, ICC/IF
种属反应性	与反应: Human
免疫原	Recombinant fragment, corresponding to a region within amino acids 1-208 of Human Grainyhead-like protein 1 homolog.
阳性对照	NT2D1, U-87 MG and MCF7 cells and whole cell lysates.
常规说明	<p>The Life Science industry has been in the grips of a reproducibility crisis for a number of years. Abcam is leading the way in addressing this with our range of recombinant monoclonal antibodies and knockout edited cell lines for gold-standard validation. Please check that this product meets your needs before purchasing.</p> <p>If you have any questions, special requirements or concerns, please send us an inquiry and/or contact our Support team ahead of purchase. Recommended alternatives for this product can be found below, along with publications, customer reviews and Q&As</p>

性能

形式	Liquid
存放说明	Shipped at 4°C. Upon delivery aliquot and store at -20°C or -80°C. Avoid repeated freeze / thaw cycles.
存储溶液	pH: 7.00 Preservative: 0.01% Thimerosal (merthiolate) Constituents: 78.99% PBS, 1% BSA, 20% Glycerol (glycerin, glycerine)
纯度	Immunogen affinity purified
纯化说明	ab111582 is purified by antigen affinity chromatography.
克隆	多克隆
同种型	IgG

应用

The Abpromise guarantee

Abpromise™ 承诺保证使用 ab111582 于以下的经测试应用

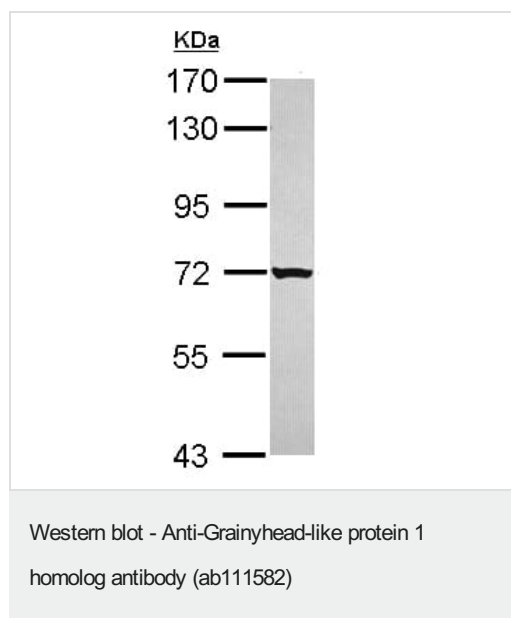
“应用说明”部分 下显示的仅为推荐的起始稀释度;实际最佳的稀释度/浓度应由使用者检定。

应用	Ab评论	说明
WB		1/500 - 1/3000. Predicted molecular weight: 70 kDa.
ICC/IF		1/100 - 1/500.

靶标

功能	Transcription factor. Isoform 1 may function as an activator and isoform 2 as a repressor in tissues where both forms are expressed. May play a role in development. May be involved in epidermal differentiation (By similarity). Binds and transactivates the EN1 promoter.
组织特异性	Isoform 1 is highly expressed in brain, pancreas, tonsil, placenta and kidney. Isoform 2 is highly expressed in brain and liver. Highly expressed in placental JEG-3 cells and at very low levels in non-steroidogenic cells. No expression detected in adrenal NCI-H295A cells.
序列相似性	Belongs to the grh/CP2 family. Grainyhead subfamily.
发展阶段	Expressed in fetal liver and brain.
细胞定位	Nucleus.

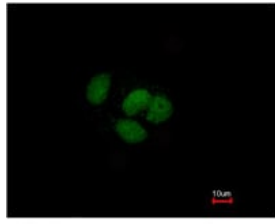
图片



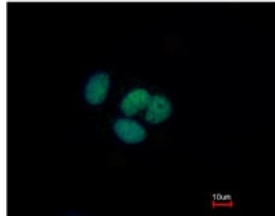
Anti-Grainyhead-like protein 1 homolog antibody (ab111582) at 1/1000 dilution + NT2D1 whole cell lysate at 30 µg

Predicted band size: 70 kDa

7.5% SDS-PAGE.



ab111582 at 1/500 dilution staining Grainyhead-like protein 1 homolog in Paraformaldehyde-fixed MCF7 cells by Immunofluorescence. Lower image shows cells co-stained with Hoechst 33342.



Immunocytochemistry/ Immunofluorescence - Anti-Grainyhead-like protein 1 homolog antibody (ab111582)

Please note: All products are "FOR RESEARCH USE ONLY. NOT FOR USE IN DIAGNOSTIC PROCEDURES"

Our Abpromise to you: Quality guaranteed and expert technical support

- Replacement or refund for products not performing as stated on the datasheet
- Valid for 12 months from date of delivery
- Response to your inquiry within 24 hours
- We provide support in Chinese, English, French, German, Japanese and Spanish
- Extensive multi-media technical resources to help you
- We investigate all quality concerns to ensure our products perform to the highest standards

If the product does not perform as described on this datasheet, we will offer a refund or replacement. For full details of the Abpromise, please visit <https://www.abcam.cn/abpromise> or contact our technical team.

Terms and conditions

- Guarantee only valid for products bought direct from Abcam or one of our authorized distributors