


# Anti-GPRC5C antibody ab75499

## 1 图像

### 概述

产品名称	Anti-GPRC5C抗体
描述	兔多克隆抗体to GPRC5C
宿主	Rabbit
经测试应用	适用于: WB
种属反应性	与反应: Mouse, African green monkey 预测可用于: Rat 
免疫原	Synthetic peptide derived from an internal region of Human GPRC5C
常规说明	<p>The Life Science industry has been in the grips of a reproducibility crisis for a number of years. Abcam is leading the way in addressing this with our range of recombinant monoclonal antibodies and knockout edited cell lines for gold-standard validation. Please check that this product meets your needs before purchasing.</p> <p>If you have any questions, special requirements or concerns, please send us an inquiry and/or contact our Support team ahead of purchase. Recommended alternatives for this product can be found below, along with publications, customer reviews and Q&amp;As</p>

### 性能

形式	Liquid
存放说明	Shipped at 4°C. Upon delivery aliquot and store at -20°C. Avoid freeze / thaw cycles.
存储溶液	<p>pH: 7.40</p> <p>Preservative: 0.02% Sodium azide</p> <p>Constituents: 50% Glycerol (glycerin, glycerine), 0.87% Sodium chloride, PBS</p> <p>Without Mg2+ and Ca2+</p>
纯度	Immunogen affinity purified
纯化说明	Affinity-purified from rabbit antiserum by affinity-chromatography using epitope-specific immunogen.
克隆	多克隆
同种型	IgG

## 应用

### The Abpromise guarantee

**Abpromise™** 承诺保证使用ab75499于以下的经测试应用

“应用说明”部分 下显示的仅为推荐的起始稀释度;实际最佳的稀释度/浓度应由使用者检定。

应用	Ab评论	说明
WB		1/500 - 1/1000. Detects a band of approximately 48 kDa (predicted molecular weight: 48 kDa).

## 靶标

### 功能

This retinoic acid-inducible G-protein coupled receptor provide evidence for a possible interaction between retinoid and G-protein signaling pathways.

### 组织特异性

Expression is highest in the periphery, particularly in the stomach, but also in the kidney, liver, pancreas, and prostate. In brain, levels of expression are generally lower than in the periphery, with the exception of cerebellum, spinal cord, and dorsal root ganglia (DRG).

### 序列相似性

Belongs to the G-protein coupled receptor 3 family.

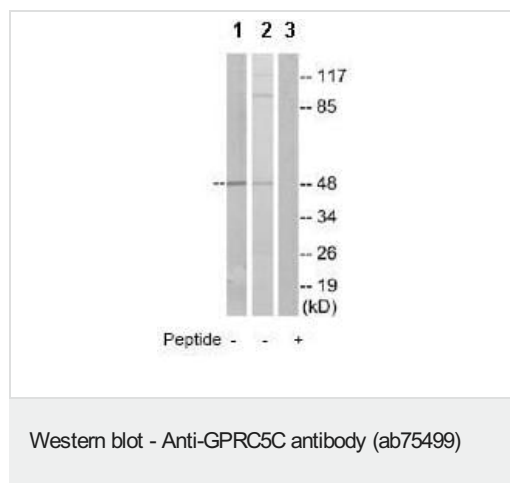
### 翻译后修饰

Phosphorylated upon DNA damage, probably by ATM or ATR.

### 细胞定位

Cell membrane. Cytoplasmic vesicle membrane. Localized in the plasma membrane and perinuclear vesicles.

## 图片



**All lanes :** Anti-GPRC5C antibody (ab75499) at 1/500 dilution

**Lane 1 :** RAW264.7 cell extract

**Lane 2 :** Cos-7 cell extract

**Lane 3 :** RAW264.7 cell extract with immunising peptide at 10 µg

Lysates/proteins at 30 µg per lane.

**Predicted band size:** 48 kDa

**Observed band size:** 48 kDa

**Additional bands at:** 100 kDa. We are unsure as to the identity of these extra bands.

**Please note:** All products are "FOR RESEARCH USE ONLY. NOT FOR USE IN DIAGNOSTIC PROCEDURES"

### Our Abpromise to you: Quality guaranteed and expert technical support

- Replacement or refund for products not performing as stated on the datasheet
- Valid for 12 months from date of delivery

- Response to your inquiry within 24 hours
- We provide support in Chinese, English, French, German, Japanese and Spanish
- Extensive multi-media technical resources to help you
- We investigate all quality concerns to ensure our products perform to the highest standards

If the product does not perform as described on this datasheet, we will offer a refund or replacement. For full details of the Abpromise, please visit <https://www.abcam.cn/abpromise> or contact our technical team.

#### **Terms and conditions**

---

- Guarantee only valid for products bought direct from Abcam or one of our authorized distributors