


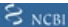


# Anti-GPCR RDC1/CXCR-7 antibody ab117836

**5 References**   **4 图像**

### 概述

产品名称	Anti-GPCR RDC1/CXCR-7抗体
描述	兔多克隆抗体to GPCR RDC1/CXCR-7
宿主	Rabbit
经测试应用	适用于: WB, ICC/IF
种属反应性	与反应: Mouse, Rat, Human 预测可用于: Chicken, Cow, Dog 
免疫原	Synthetic peptide corresponding to Mouse GPCR RDC1/CXCR-7 aa 300-400 (C terminal) conjugated to keyhole limpet haemocyanin.  <b>Run BLAST with</b>  <b>Run BLAST with</b> 
阳性对照	ICC/IF: HEK293 cells, HeLa cells. WB: Mouse brain lysate, Rat brain lysate.
常规说明	<p>The Life Science industry has been in the grips of a reproducibility crisis for a number of years. Abcam is leading the way in addressing this with our range of recombinant monoclonal antibodies and knockout edited cell lines for gold-standard validation. Please check that this product meets your needs before purchasing.</p> <p>If you have any questions, special requirements or concerns, please send us an inquiry and/or contact our Support team ahead of purchase. Recommended alternatives for this product can be found below, along with publications, customer reviews and Q&amp;As</p>

### 性能

形式	Liquid
存放说明	Shipped at 4°C. Upon delivery aliquot and store at -20°C. Avoid freeze / thaw cycles.
存储溶液	Preservative: 0.02% Sodium azide Constituent: 99% Whole serum
纯度	Whole antiserum
克隆	多克隆
同种型	IgG

### 应用

The Abpromise guarantee      Abpromise™承诺保证使用ab117836于以下的经测试应用

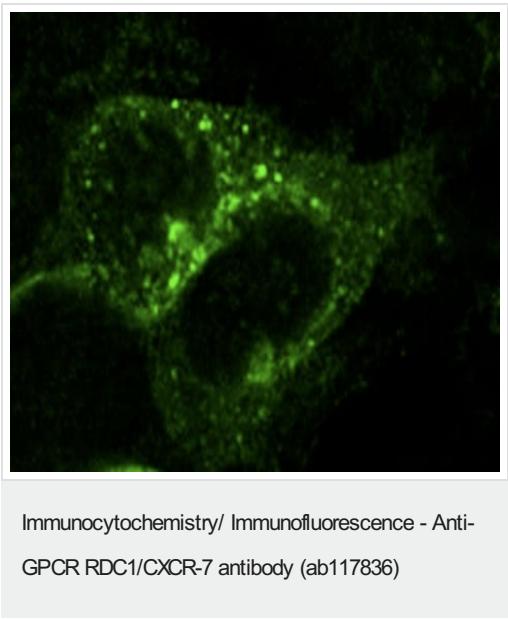
“应用说明”部分 下显示的仅为推荐的起始稀释度;实际最佳的稀释度/浓度应由使用者检定。

应用	Ab评论	说明
WB		1/5000. Predicted molecular weight: 41 kDa.
ICC/IF		1/5000.

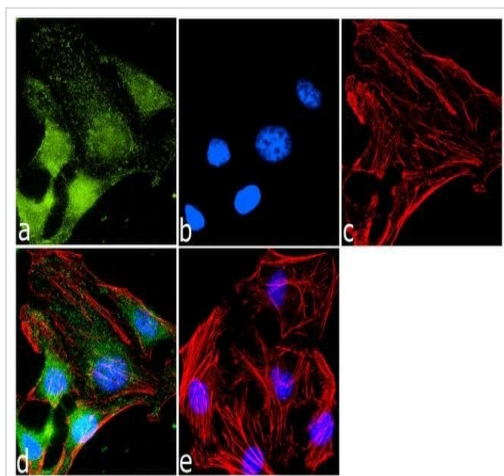
靶标

功能	Receptor for CXCL12/SDF1. Acts as coreceptor with CXCR4 for a restricted number of HIV isolates.
组织特异性	Expressed in monocytes, basophils, and B-cells. Lower expression in CD4+ T-lymphocytes and natural killer cells.
序列相似性	Belongs to the G-protein coupled receptor 1 family.
细胞定位	Cell membrane.

图片

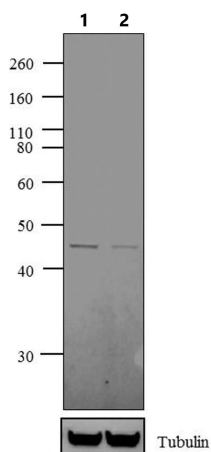


Immunocytochemistry analysis of HEK293 cells using 1/5000 ab117836.



Immunocytochemistry/ Immunofluorescence - Anti-GPCR RDC1/CXCR-7 antibody (ab117836)

Immunofluorescence analysis of CXCR7 was done on 70% confluent log phase HeLa cells. The cells were fixed with 4% paraformaldehyde for 10 minutes, permeabilized with 0.1% Triton™ X-100 for 10 minutes, and blocked with 1% BSA for 1 hour at room temperature. The cells were labeled with CXCR7 Rabbit Polyclonal Antibody (ab117836) at 1/1000 dilution in 0.1% BSA and incubated for 3 hours at room temperature and then labeled with Goat anti-Rabbit IgG (H+L) Superclonal™ Secondary Antibody, Alexa Fluor® 488 conjugate at a dilution of 1/2000 for 45 minutes at room temperature (Panel a: green). Nuclei (Panel b: blue) were stained with SlowFade® Gold Antifade Mountant with DAPI. F-actin (Panel c: red) was stained with Rhodamine Phalloidin (1/300). Panel d is a merged image showing Cytoplasmic localization. Panel e is a no primary antibody control. The images were captured at 60X magnification.



Western blot - Anti-GPCR RDC1/CXCR-7 antibody (ab117836)

#### All lanes :

**Lane 1 :** Mouse brain whole cell lysate

**Lane 2 :** Rat brain whole cell lysate

Lysates/proteins at 20 µg per lane.

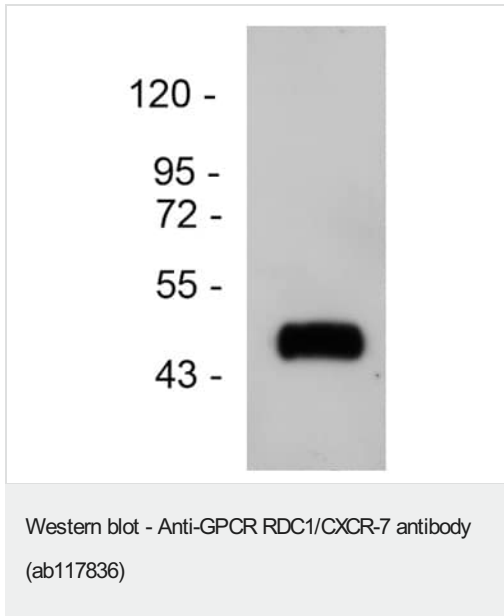
**Predicted band size:** 41 kDa

**Observed band size:** 41 kDa

The blots were probed with Anti-CXCR7 Rabbit Polyclonal Antibody (ab117836, 1/4000-1/6000 dilution) and detected by chemiluminescence using Goat anti-Rabbit IgG (H+L) Superclonal™ Secondary Antibody, HRP conjugate (0.4 µg/mL, 1/2500 dilution).

Known quantity of protein samples were electrophoresed using Novex® NuPAGE® 12 % Bis-Tris gel, XCell SureLock™

Electrophoresis System and Novex® Sharp Pre-Stained Protein Standard. Resolved proteins were then transferred onto a nitrocellulose membrane with iBlot® 2 Dry Blotting System. The membrane was probed with the relevant primary and secondary Antibody following blocking with 5 % skimmed milk. Chemiluminescent detection was performed using Pierce™ ECL Western Blotting Substrate.



Anti-GPCR RDC1/CXCR-7 antibody (ab117836) at 1/5000 dilution  
+ Mouse brain lysate

**Predicted band size:** 41 kDa

**Please note:** All products are "FOR RESEARCH USE ONLY. NOT FOR USE IN DIAGNOSTIC PROCEDURES"

#### Our Abpromise to you: Quality guaranteed and expert technical support

- Replacement or refund for products not performing as stated on the datasheet
- Valid for 12 months from date of delivery
- Response to your inquiry within 24 hours
- We provide support in Chinese, English, French, German, Japanese and Spanish
- Extensive multi-media technical resources to help you
- We investigate all quality concerns to ensure our products perform to the highest standards

If the product does not perform as described on this datasheet, we will offer a refund or replacement. For full details of the Abpromise, please visit <https://www.abcam.cn/abpromise> or contact our technical team.

#### Terms and conditions

- Guarantee only valid for products bought direct from Abcam or one of our authorized distributors