

Anti-GPCR GPR48/LGR4 antibody [6G8.B3.G5.C3] ab106089

2 图像

概述

产品名称	Anti-GPCR GPR48/LGR4抗体[6G8.B3.G5.C3]
描述	小鼠单克隆抗体[6G8.B3.G5.C3] to GPCR GPR48/LGR4
宿主	Mouse
经测试应用	适用于: IHC-P
种属反应性	与反应: Human 预测可用于: Chimpanzee, Macaque monkey, Orangutan 
免疫原	Synthetic peptide corresponding to Human GPCR GPR48/LGR4 (internal sequence).
阳性对照	Human Brain cerebellum and Pancreas islet tissues.
常规说明	Expiration date is one year from date of opening. Dilute only prior to immediate use. The Life Science industry has been in the grips of a reproducibility crisis for a number of years. Abcam is leading the way in addressing this with our range of recombinant monoclonal antibodies and knockout edited cell lines for gold-standard validation. Please check that this product meets your needs before purchasing. If you have any questions, special requirements or concerns, please send us an inquiry and/or contact our Support team ahead of purchase. Recommended alternatives for this product can be found below, along with publications, customer reviews and Q&As

性能

形式	Liquid
存放说明	Shipped at 4°C. Upon delivery aliquot. Store at -20°C or -80°C. Avoid freeze / thaw cycle.
存储溶液	Preservative: 0.01% Sodium azide Constituents: 0.42% Potassium phosphate, 0.88% Sodium chloride
纯度	Protein A purified
纯化说明	ab106089 was purified from concentrated tissue culture supernate by Protein A chromatography.
克隆	单克隆
克隆编号	6G8.B3.G5.C3
骨髓瘤	Sp2/0
同种型	IgG2b

应用

The Abpromise guarantee

Abpromise™ 承诺保证使用ab106089于以下的经测试应用

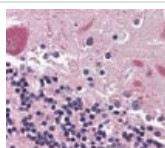
“应用说明”部分 下显示的仅为推荐的起始稀释度;实际最佳的稀释度/浓度应由使用者检定。

应用	Ab评论	说明
IHC-P		Use a concentration of 5 µg/ml. Do not perform antigen retrieval.

靶标

功能	Orphan receptor.
组织特异性	Expressed in multiple steroidogenic tissues: placenta, ovary, testis and adrenal. Expressed also in spinal cord, thyroid, stomach, trachea, heart, pancreas, kidney, prostate and spleen.
序列相似性	Belongs to the G-protein coupled receptor 1 family. Contains 15 LRR (leucine-rich) repeats. Contains 1 LRRNT domain.
细胞定位	Cell membrane.

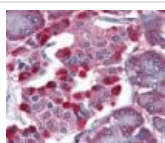
图片



Immunohistochemistry (Formalin/PFA-fixed paraffin-embedded sections) - Anti-GPCR GPR48/LGR4 antibody [6G8.B3.G5.C3] (ab106089)

ab106089 at 5µg/ml staining GPCR GPR48/LGR4 in Formalin-fixed,Paraffin-embedded Human Brain cerebellum by Immunohistochemistry.

The image shows the localization of antibody as the precipitated red signal, with a hematoxylin purple nuclear counterstain.



Immunohistochemistry (Formalin/PFA-fixed paraffin-embedded sections) - Anti-GPCR GPR48/LGR4 antibody [6G8.B3.G5.C3] (ab106089)

ab106089 at 5µg/ml staining GPCR GPR48/LGR4 in Formalin-fixed,Paraffin-embedded Human Pancreas, ilset tissue by Immunohistochemistry. The image shows the localization of antibody as the precipitated red signal, with a hematoxylin purple nuclear counterstain.

Please note: All products are "FOR RESEARCH USE ONLY. NOT FOR USE IN DIAGNOSTIC PROCEDURES"

Our Abpromise to you: Quality guaranteed and expert technical support

- Replacement or refund for products not performing as stated on the datasheet

- Valid for 12 months from date of delivery
- Response to your inquiry within 24 hours

- We provide support in Chinese, English, French, German, Japanese and Spanish
- Extensive multi-media technical resources to help you
- We investigate all quality concerns to ensure our products perform to the highest standards

If the product does not perform as described on this datasheet, we will offer a refund or replacement. For full details of the Abpromise, please visit <https://www.abcam.cn/abpromise> or contact our technical team.

Terms and conditions

- Guarantee only valid for products bought direct from Abcam or one of our authorized distributors