

Anti-GPCR GPR35 antibody ab76217

[1 References](#) [2 图像](#)

概述

产品名称	Anti-GPCR GPR35抗体
描述	兔多克隆抗体to GPCR GPR35
宿主	Rabbit
经测试应用	适用于: WB, ICC/IF
种属反应性	与反应: Human
免疫原	Synthetic peptide. This information is proprietary to Abcam and/or its suppliers.
阳性对照	WB: extracts from LOVO cells; ICC/IF: A549 cells.
常规说明	<p>The Life Science industry has been in the grips of a reproducibility crisis for a number of years. Abcam is leading the way in addressing this with our range of recombinant monoclonal antibodies and knockout edited cell lines for gold-standard validation. Please check that this product meets your needs before purchasing.</p> <p>If you have any questions, special requirements or concerns, please send us an inquiry and/or contact our Support team ahead of purchase. Recommended alternatives for this product can be found below, along with publications, customer reviews and Q&As</p>

性能

形式	Liquid
存放说明	Shipped at 4°C. Upon delivery aliquot and store at -20°C. Avoid repeated freeze / thaw cycles.
存储溶液	pH: 7.40 Preservative: 0.02% Sodium azide Constituents: 0.87% Sodium chloride, 50% Glycerol (glycerin, glycerine), PBS
纯度	Immunogen affinity purified
克隆	多克隆
同种型	IgG

应用

The Abpromise guarantee **Abpromise™**承诺保证使用ab76217于以下的经测试应用

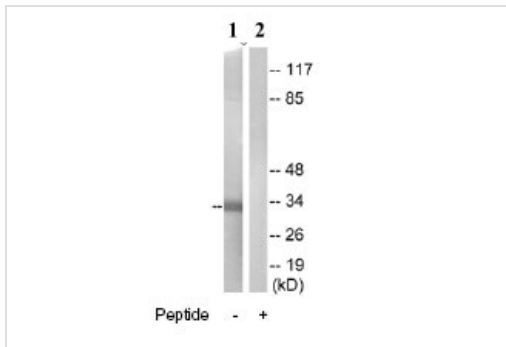
“应用说明”部分 下显示的仅为推荐的起始稀释度;实际最佳的稀释度/浓度应由使用者检定。

应用	Ab评论	说明
WB		1/500 - 1/1000. Predicted molecular weight: 34 kDa.
ICC/IF		1/500 - 1/1000.

靶标

功能	Acts as a receptor for kynurenic acid, an intermediate in the tryptophan metabolic pathway. The activity of this receptor is mediated by G-proteins that elicit calcium mobilization and inositol phosphate production through G(qi/o) proteins.
组织特异性	Predominantly expressed in immune and gastrointestinal tissues.
序列相似性	Belongs to the G-protein coupled receptor 1 family.
细胞定位	Cell membrane. Internalized to the cytoplasm after exposure to kynurenic acid.

图片



Western blot - Anti-GPCR GPR35 antibody (ab76217)

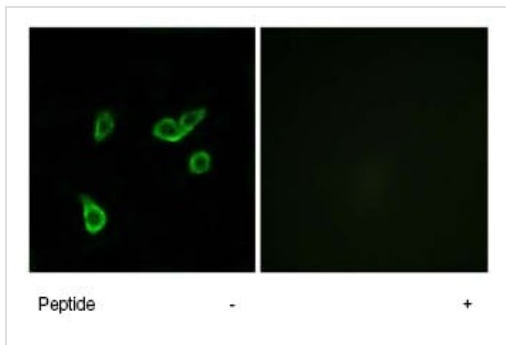
All lanes : Anti-GPCR GPR35 antibody (ab76217) at 1/500 dilution

Lane 1 : extracts from LOVO cells

Lane 2 : extracts from LOVO cells with immunizing peptide at 10 µg

Lysates/proteins at 30 µg per lane.

Predicted band size: 34 kDa



Immunocytochemistry/ Immunofluorescence - Anti-GPCR GPR35 antibody (ab76217)

Left panel: immunofluorescence analysis of A549 cells, using 1/500 ab76217. Right panel: same, after pre-incubation with the immunizing peptide.

Please note: All products are "FOR RESEARCH USE ONLY. NOT FOR USE IN DIAGNOSTIC PROCEDURES"

Our Abpromise to you: Quality guaranteed and expert technical support

- Replacement or refund for products not performing as stated on the datasheet
- Valid for 12 months from date of delivery
- Response to your inquiry within 24 hours

- We provide support in Chinese, English, French, German, Japanese and Spanish
- Extensive multi-media technical resources to help you
- We investigate all quality concerns to ensure our products perform to the highest standards

If the product does not perform as described on this datasheet, we will offer a refund or replacement. For full details of the Abpromise, please visit <https://www.abcam.cn/abpromise> or contact our technical team.

Terms and conditions

- Guarantee only valid for products bought direct from Abcam or one of our authorized distributors