

Anti-GPCR GPR20 antibody ab75559

3 图像

概述

产品名称	Anti-GPCR GPR20抗体
描述	兔多克隆抗体to GPCR GPR20
宿主	Rabbit
经测试应用	适用于: WB, IHC-P, ICC/IF
种属反应性	与反应: Human
免疫原	Synthesized peptide derived from an internal sequence of human GPCR GPR20
阳性对照	IHC-P: human brain tissue WB: extracts from LOVO cells ICC/IF: A549 cells
常规说明	<p>The Life Science industry has been in the grips of a reproducibility crisis for a number of years. Abcam is leading the way in addressing this with our range of recombinant monoclonal antibodies and knockout edited cell lines for gold-standard validation. Please check that this product meets your needs before purchasing.</p> <p>If you have any questions, special requirements or concerns, please send us an inquiry and/or contact our Support team ahead of purchase. Recommended alternatives for this product can be found below, along with publications, customer reviews and Q&As</p>

性能

形式	Liquid
存放说明	Shipped at 4°C. Upon delivery aliquot and store at -20°C. Avoid freeze / thaw cycles.
存储溶液	pH: 7.40 Preservative: 0.02% Sodium azide Constituents: 50% Glycerol (glycerin, glycerine), 0.87% Sodium chloride, PBS
纯度	Without Mg ²⁺ and Ca ²⁺ Immunogen affinity purified
纯化说明	The antibody was affinity purified from rabbit antiserum by affinity chromatography using epitope specific immunogen.
克隆	多克隆
同种型	IgG

应用

The Abpromise guarantee **Abpromise™** 承诺保证使用 ab75559 于以下的经测试应用

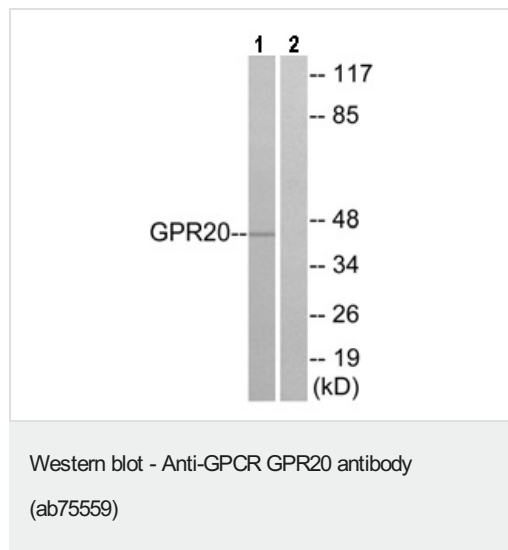
“应用说明”部分 下显示的仅为推荐的起始稀释度;实际最佳的稀释度/浓度应由使用者检定。

应用	Ab评论	说明
WB		1/500 - 1/1000. Predicted molecular weight: 38 kDa.
IHC-P		1/50 - 1/100.
ICC/IF		1/500 - 1/1000.

靶标

功能	Orphan receptor with constitutive G(i) signaling activity that activate cyclic AMP.
组织特异性	Ubiquitous with highest levels in intestinal tissues. In the brain detected in thalamus, putamen, and caudate, but not in frontal cortex, pons and hypothalamus.
序列相似性	Belongs to the G-protein coupled receptor 1 family.
细胞定位	Cell membrane.

图片



All lanes : Anti-GPCR GPR20 antibody (ab75559) at 1/500 dilution

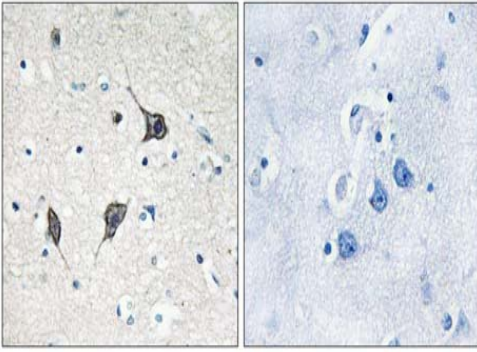
Lane 1 : extracts from LOVO cells

Lane 2 : extracts from LOVO cells with immunizing peptide at 5 μ g

Lysates/proteins at 20 μ g per lane.

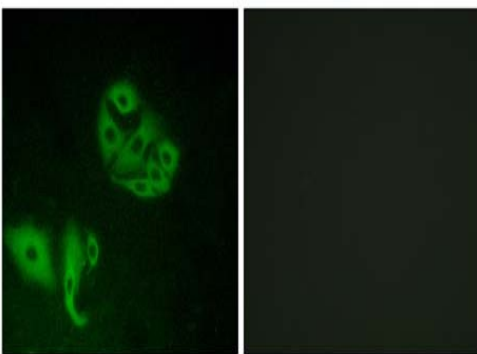
Predicted band size: 38 kDa

Observed band size: 42 kDa



Left panel: immunohistochemistry analysis of paraffin-embedded human brain tissue using 1/50 ab75559; Right panel: same, after pre-incubation with the immunizing peptide.

Immunohistochemistry (Formalin/PFA-fixed paraffin-embedded sections) - Anti-GPCR GPR20 antibody (ab75559)



Left panel: immunofluorescence analysis of A549 cells, using 1/500 ab75559; Right panel: same, after pre-incubation with the immunizing peptide.

Immunocytochemistry/ Immunofluorescence - Anti-GPCR GPR20 antibody (ab75559)

Please note: All products are "FOR RESEARCH USE ONLY. NOT FOR USE IN DIAGNOSTIC PROCEDURES"

Our Abpromise to you: Quality guaranteed and expert technical support

- Replacement or refund for products not performing as stated on the datasheet
- Valid for 12 months from date of delivery
- Response to your inquiry within 24 hours
- We provide support in Chinese, English, French, German, Japanese and Spanish
- Extensive multi-media technical resources to help you

- We investigate all quality concerns to ensure our products perform to the highest standards

If the product does not perform as described on this datasheet, we will offer a refund or replacement. For full details of the Abpromise, please visit <https://www.abcam.cn/abpromise> or contact our technical team.

Terms and conditions

- Guarantee only valid for products bought direct from Abcam or one of our authorized distributors