

# Anti-GPCR GPR126 antibody ab75356

[5 References](#) [1 图像](#)

### 概述

---

<b>产品名称</b>	Anti-GPCR GPR126抗体
<b>描述</b>	兔多克隆抗体to GPCR GPR126
<b>宿主</b>	Rabbit
<b>经测试应用</b>	<b>适用于:</b> WB
<b>种属反应性</b>	<b>与反应:</b> Human
<b>免疫原</b>	Synthetic peptide derived from an internal region of human GPCR GPR126
<b>阳性对照</b>	Extracts from HUVEC cells
<b>常规说明</b>	<p>The Life Science industry has been in the grips of a reproducibility crisis for a number of years. Abcam is leading the way in addressing this with our range of recombinant monoclonal antibodies and knockout edited cell lines for gold-standard validation. Please check that this product meets your needs before purchasing.</p> <p>If you have any questions, special requirements or concerns, please send us an inquiry and/or contact our Support team ahead of purchase. Recommended alternatives for this product can be found below, along with publications, customer reviews and Q&amp;As</p>

### 性能

---

<b>形式</b>	Liquid
<b>存放说明</b>	Shipped at 4°C. Upon delivery aliquot and store at -20°C. Avoid freeze / thaw cycles.
<b>存储溶液</b>	pH: 7.40 Preservative: 0.02% Sodium azide Constituents: 50% Glycerol (glycerin, glycerine), 0.87% Sodium chloride, PBS
<b>纯度</b>	Without Mg <sup>2+</sup> and Ca <sup>2+</sup>
<b>克隆</b>	Immunogen affinity purified
<b>同种型</b>	多克隆 IgG

### 应用

---

## The Abpromise guarantee

**Abpromise™** 承诺保证使用 ab75356 于以下的经测试应用

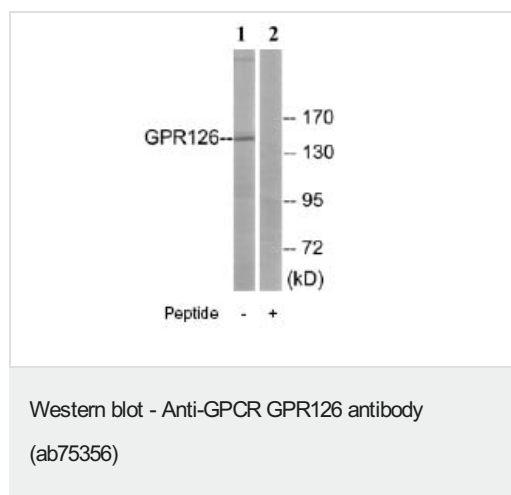
“应用说明”部分下显示的仅为推荐的起始稀释度；实际最佳的稀释度/浓度应由使用者检定。

应用	Ab评论	说明
WB		1/500 - 1/1000. Detects a band of approximately 137 kDa (predicted molecular weight: 137 kDa).

## 靶标

<b>功能</b>	Orphan receptor. May be required for normal differentiation of promyelinating Schwann cells and for normal myelination of axons. Signals probably through G-proteins to transiently elevate cAMP levels.
<b>组织特异性</b>	Expressed in placenta and to a lower extent in pancreas and liver. Detected in aortic endothelial cells but not in skin microvascular endothelial cells.
<b>序列相似性</b>	Belongs to the G-protein coupled receptor 2 family. LN-TM7 subfamily. Contains 1 CUB domain. Contains 1 GPS domain. Contains 1 pentaxin domain.
<b>翻译后修饰</b>	Proteolytically cleaved into 2 conserved sites: one in the GPS domain (S1 site) and the other in the middle of the extracellular domain (S2 site). The proteolytic cleavage at S1 site generates an extracellular subunit and a seven-transmembrane subunit. Furin is involved in the cleavage of the S2 site generating a soluble fragment. Processing at the GPS domain occurred independent of and probably prior to the cleavage at the S2 site.
<b>细胞定位</b>	Cell membrane. Detected on the cell surface of activated but not resting umbilical vein.

## 图片



**All lanes :** Anti-GPCR GPR126 antibody (ab75356) at 1/500 dilution

**Lane 1 :** extracts from HUVEC cells

**Lane 2 :** extracts from HUVEC cells with immunising peptide at 10 µg

Lysates/proteins at 30 µg per lane.

**Predicted band size:** 137 kDa

**Observed band size:** 137 kDa

**Please note:** All products are "FOR RESEARCH USE ONLY. NOT FOR USE IN DIAGNOSTIC PROCEDURES"

## **Our Abpromise to you: Quality guaranteed and expert technical support**

---

- Replacement or refund for products not performing as stated on the datasheet
- Valid for 12 months from date of delivery
- Response to your inquiry within 24 hours
  
- We provide support in Chinese, English, French, German, Japanese and Spanish
- Extensive multi-media technical resources to help you
- We investigate all quality concerns to ensure our products perform to the highest standards

If the product does not perform as described on this datasheet, we will offer a refund or replacement. For full details of the Abpromise, please visit <https://www.abcam.cn/abpromise> or contact our technical team.

## **Terms and conditions**

---

- Guarantee only valid for products bought direct from Abcam or one of our authorized distributors