

Anti-GPCR GPR124 antibody ab198817

[1 References](#) [2 图像](#)

概述

产品名称	Anti-GPCR GPR124抗体
描述	兔多克隆抗体to GPCR GPR124
宿主	Rabbit
经测试应用	适用于: IHC-P, WB
种属反应性	与反应: Mouse, Human 预测可用于: Rat 
免疫原	Synthetic peptide corresponding to Human GPCR GPR124 (internal sequence). NP_116166. Database link: Q96PE1
阳性对照	Mouse bladder tissue lysate; Human liver cancer tissue.
常规说明	<p>The Life Science industry has been in the grips of a reproducibility crisis for a number of years. Abcam is leading the way in addressing this with our range of recombinant monoclonal antibodies and knockout edited cell lines for gold-standard validation. Please check that this product meets your needs before purchasing.</p> <p>If you have any questions, special requirements or concerns, please send us an inquiry and/or contact our Support team ahead of purchase. Recommended alternatives for this product can be found below, along with publications, customer reviews and Q&As</p>

性能

形式	Liquid
存放说明	Shipped at 4°C. Store at +4°C short term (1-2 weeks). Upon delivery aliquot. Store at -20°C long term. Avoid freeze / thaw cycle.
存储溶液	pH: 7.4 Preservative: 0.05% Sodium azide Constituents: 49% PBS, 50% Glycerol (glycerin, glycerine)
纯度	Immunogen affinity purified
克隆	多克隆
同种型	IgG

应用

The Abpromise guarantee

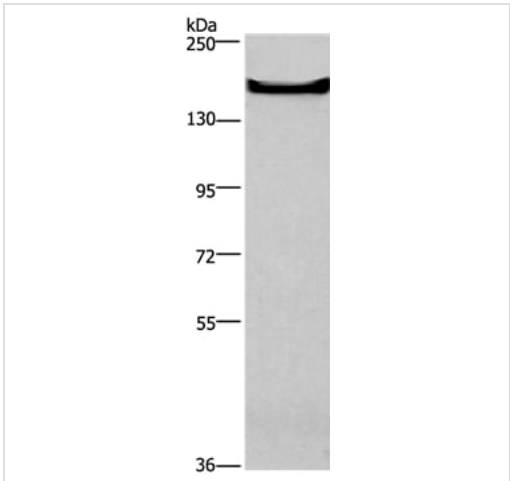
Abpromise™承诺保证使用ab198817于以下的经测试应用

“应用说明”部分 下显示的仅为推荐的起始稀释度;实际最佳的稀释度/浓度应由使用者检定。

应用	Ab评论	说明
IHC-P		1/100 - 1/300.
WB		1/500 - 1/2000. Predicted molecular weight: 143 kDa.

靶标	
功能	Endothelial receptor that acts as an essential regulator of CNS angiogenesis. Required for normal endothelial cell sprouting and migration in the forebrain and neural tube.
组织特异性	Expressed in endothelial cells (at protein level). Abundantly expressed in tumor vessels, heart, placenta, ovary, small intestine, and colon.
序列相似性	Belongs to the G-protein coupled receptor 2 family. LN-TM7 subfamily. Contains 1 GPS domain. Contains 1 Ig-like (immunoglobulin-like) domain. Contains 4 LRR (leucine-rich) repeats. Contains 1 LRRCT domain. Contains 1 LRRNT domain.
结构域	Binds to DLG1 through its PDZ-binding motif.
细胞定位	Cell membrane.

图片



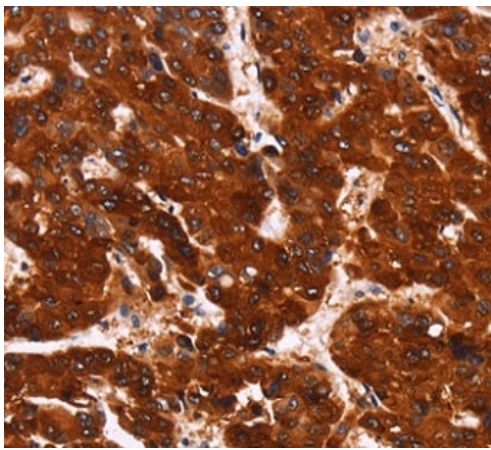
Western blot - Anti-GPCR GPR124 antibody (ab198817)

Anti-PCR GPR124 antibody (ab198817) at 1/300 dilution +
Mouse bladder tissue lysate at 40 µg

Predicted band size: 143 kDa

Exposure time: 40 seconds

Gel: 6% SDS-PAGE



Immunohistochemical analysis of paraffin-embedded Human liver cancer tissue labeling GPCR GPR124 with ab198817 at a 1/40 dilution.

Immunohistochemistry (Formalin/PFA-fixed paraffin-embedded sections) - Anti-GPCR GPR124 antibody (ab198817)

Please note: All products are "FOR RESEARCH USE ONLY. NOT FOR USE IN DIAGNOSTIC PROCEDURES"

Our Abpromise to you: Quality guaranteed and expert technical support

- Replacement or refund for products not performing as stated on the datasheet
- Valid for 12 months from date of delivery
- Response to your inquiry within 24 hours
- We provide support in Chinese, English, French, German, Japanese and Spanish
- Extensive multi-media technical resources to help you
- We investigate all quality concerns to ensure our products perform to the highest standards

If the product does not perform as described on this datasheet, we will offer a refund or replacement. For full details of the Abpromise, please visit <https://www.abcam.cn/abpromise> or contact our technical team.

Terms and conditions

- Guarantee only valid for products bought direct from Abcam or one of our authorized distributors