

# Anti-GOSR1/GS28 antibody ab88462

[1 References](#) [4 图像](#)

### 概述

---

|       |   |
|-------|---|
| 产品名称  | Anti-GOSR1/GS28抗体   |
| 描述    | 小鼠多克隆抗体to GOSR1/GS28  |
| 宿主    | Mouse   |
| 经测试应用 | 适用于: WB, ICC/IF   |
| 种属反应性 | 与反应: Human  |
| 免疫原   | Recombinant full length protein within Human GOSR1/GS28 aa 1-250. The exact immunogen sequence used to generate this antibody is proprietary information. If additional detail on the immunogen is needed to determine the suitability of the antibody for your needs, please <b>contact</b> our Scientific Support team to discuss your requirements.<br>Database link: <a href="#">NP_004862.1</a>  |
| 阳性对照  | Human liver membrane lysate A-431 membrane lysate Transfected 293T membrane lysate HeLa cells   |
| 常规说明  | <p>The Life Science industry has been in the grips of a reproducibility crisis for a number of years. Abcam is leading the way in addressing this with our range of recombinant monoclonal antibodies and knockout edited cell lines for gold-standard validation. Please check that this product meets your needs before purchasing.</p> <p>If you have any questions, special requirements or concerns, please send us an inquiry and/or contact our Support team ahead of purchase. Recommended alternatives for this product can be found below, along with publications, customer reviews and Q&amp;As</p> |

### 性能

---

|      |   |
|------|---|
| 形式   | Liquid  |
| 存放说明 | Shipped at 4°C. Upon delivery aliquot and store at -20°C or -80°C. Avoid repeated freeze / thaw cycles. |
| 存储溶液 | pH: 7.40<br>Constituent: 100% PBS   |
| 纯度   | Protein A purified  |
| 克隆   | 多克隆   |
| 同种型  | IgG   |

## 应用

**The Abpromise guarantee**      **Abpromise™** 承诺保证使用 ab88462 于以下的经测试应用

“应用说明”部分 下显示的仅为推荐的起始稀释度;实际最佳的稀释度/浓度应由使用者检定。

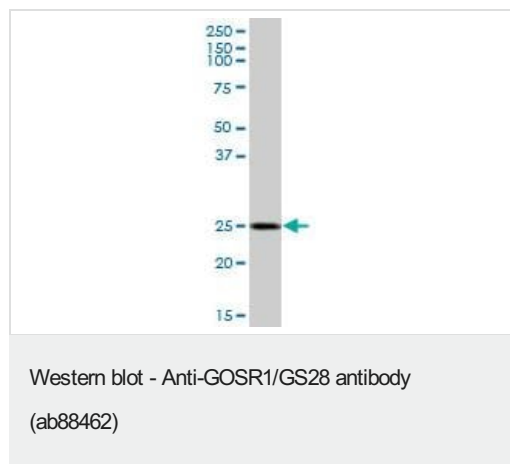
| 应用     | Ab评论 | 说明  |
|--------|------|---|
| WB     |      | Use a concentration of 1 - 5 µg/ml. Predicted molecular weight: 29 kDa. |
| ICC/IF |      | Use a concentration of 10 µg/ml.  |

## 靶标

**相关性**      GOSR1/GS28 is a trafficking membrane protein which transports proteins among the endoplasmic reticulum and the Golgi and between Golgi compartments; it is considered an essential component of the Golgi SNAP receptor (SNARE) complex.

**细胞定位**      Cell Membrane, Endoplasmic reticulum and Golgi Apparatus

## 图片



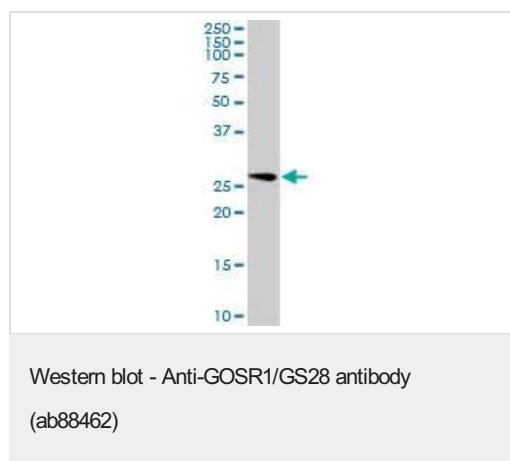
Anti-GOSR1/GS28 antibody (ab88462) at 5 µg/ml + Human liver lysate at 25 µg

### Secondary

Goat Anti-Mouse IgG at 1/2500 dilution

**Predicted band size:** 29 kDa

**Observed band size:** 25 kDa



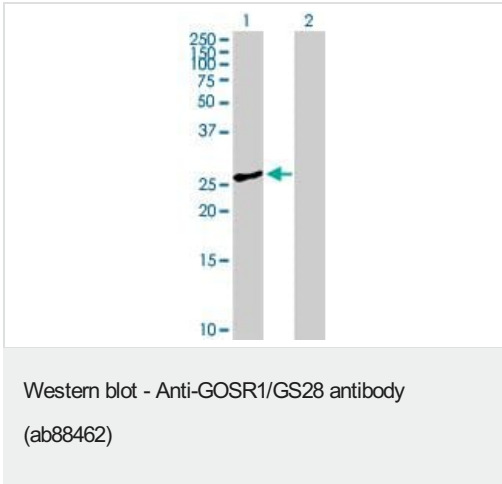
Anti-GOSR1/GS28 antibody (ab88462) at 5 µg/ml + A-431 cell lysate at 25 µg

### Secondary

Goat Anti-Mouse IgG at 1/2500 dilution

**Predicted band size:** 29 kDa

**Observed band size:** 29 kDa



**All lanes :** Anti-GOSR1/GS28 antibody (ab88462) at 5 µg/ml

**Lane 1 :** Transfected 293T cell line

**Lane 2 :** Non-transfected cell line

Lysates/proteins at 25 µg per lane.

**Secondary**

**All lanes :** Goat Anti-Mouse IgG at 1/2500 dilution

**Predicted band size:** 29 kDa

**Observed band size:** 27 kDa



Immunofluorescence of ab88462 (used at 10µg/ml) to GOSR1/GS28 on HeLa cells.

**Please note:** All products are "FOR RESEARCH USE ONLY. NOT FOR USE IN DIAGNOSTIC PROCEDURES"

**Our Abpromise to you: Quality guaranteed and expert technical support**

- Replacement or refund for products not performing as stated on the datasheet
- Valid for 12 months from date of delivery
- Response to your inquiry within 24 hours
- We provide support in Chinese, English, French, German, Japanese and Spanish
- Extensive multi-media technical resources to help you
- We investigate all quality concerns to ensure our products perform to the highest standards

If the product does not perform as described on this datasheet, we will offer a refund or replacement. For full details of the Abpromise, please visit <https://www.abcam.cn/abpromise> or contact our technical team.

**Terms and conditions**

- Guarantee only valid for products bought direct from Abcam or one of our authorized distributors