



### Anti-GOLPH2 antibody [OTI6C9] ab119800

敲除验证

#### 11 图像

#### 概述

|       |  |
|-------|--|
| 产品名称  | Anti-GOLPH2抗体[OTI6C9]  |
| 描述    | 小鼠单克隆抗体[OTI6C9] to GOLPH2  |
| 宿主    | Mouse  |
| 经测试应用 | 适用于: WB, IHC-P, ICC/IF, Flow Cyt (Intra)   |
| 种属反应性 | 与反应: Human, African green monkey   |
| 免疫原   | Recombinant full length protein corresponding to Human GOLPH2 aa 1 to the C-terminus.<br>Produced in HEK-293T cells (NP_808800).<br>Database link: <a href="#">Q8NBJ4</a>  |
|       | <div>  <a href="#">Run BLAST with</a> </div> <div>  <a href="#">Run BLAST with</a> </div>  |
| 阳性对照  | WB: HEK-293T cell lysate transfected with pCMV-ENTRY GOLPH2 cDNA; HeLa, A549 and COS-7 cell extracts. IHC-P: Human ovary adenocarcinoma, thyroid carcinoma, endometrium, endometrium adenocarcinoma, prostate and bladder carcinoma tissues. ICC/IF: COS-7 cells transiently transfected by pCMV6-ENTRY GOLPH2. Flow Cyt (Intra): HeLa cells.  |
| 常规说明  | <p>The clone number has been updated from 6C9 to OTI6C9, both clone numbers name the same clone.</p> <p>The Life Science industry has been in the grips of a reproducibility crisis for a number of years. Abcam is leading the way in addressing this with our range of recombinant monoclonal antibodies and knockout edited cell lines for gold-standard validation. Please check that this product meets your needs before purchasing.</p> <p>If you have any questions, special requirements or concerns, please send us an inquiry and/or contact our Support team ahead of purchase. Recommended alternatives for this product can be found below, along with publications, customer reviews and Q&amp;As</p> |

#### 性能

|      |   |
|------|---|
| 形式   | Liquid  |
| 存放说明 | Shipped at 4°C. Store at +4°C short term (1-2 weeks). Upon delivery aliquot. Store at -20°C. Avoid freeze / thaw cycle. |
| 存储溶液 | pH: 7.30<br>Preservative: 0.02% Sodium azide  |

|      |  |
|------|--|
| 纯度   | Constituents: PBS, 1% BSA, 50% Glycerol                            |
| 纯化说明 | Affinity purified  |
| 克隆   | Purified from cell culture supernatant by affinity chromatography. |
| 克隆编号 | 单克隆  |
| 同种型  | OT16C9   |
|      | IgG1   |

应用

The Abpromise guarantee      **Abpromise™**承诺保证使用ab119800于以下的经测试应用

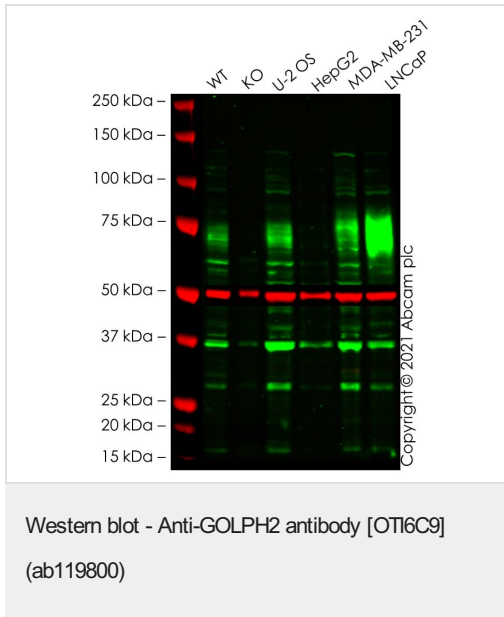
“应用说明”部分 下显示的仅为推荐的起始稀释度;实际最佳的稀释度/浓度应由使用者检定。

| 应用               | Ab评论 | 说明   |
|------------------|------|--|
| WB               |      | 1/500 - 1/2000. Predicted molecular weight: 45 kDa.  |
| IHC-P            |      | 1/150.   |
| ICC/IF           |      | 1/100.   |
| Flow Cyt (Intra) |      | Use 1µg for 10 <sup>6</sup> cells.<br><b>ab170190</b> - Mouse monoclonal IgG1, is suitable for use as an isotype control with this antibody. |

靶标

|       |  |
|-------|--|
| 功能    | Unknown. Cellular response protein to viral infection.   |
| 组织特异性 | Widely expressed. Highly expressed in colon, prostate, trachea and stomach. Expressed at lower level in testis, muscle, lymphoid tissues, white blood cells and spleen. Predominantly expressed by cells of the epithelial lineage. Expressed at low level in normal liver. Expression significantly increases in virus (HBV, HCV) infected liver. Expression does not increase in liver disease due to non-viral causes (alcohol-induced liver disease, autoimmune hepatitis). Increased expression in hepatocytes appears to be a general feature of advanced liver disease. In liver tissue from patients with adult giant-cell hepatitis (GCH), it is strongly expressed in hepatocyte-derived syncytial giant cells. Constitutively expressed by biliary epithelial cells but not by hepatocytes. |
| 序列相似性 | Belongs to the GOLM1/CASC4 family.   |
| 翻译后修饰 | Glycosylated.<br>Phosphorylation sites are present in the extracellular medium.  |
| 细胞定位  | Golgi apparatus > cis-Golgi network membrane. Early Golgi. Cycles via the cell surface and endosomes upon luminal pH disruption.   |

图片



**All lanes :** Anti-GOLPH2 antibody [OTI6C9] (ab119800) at 1/500 dilution

**Lane 1 :** Wild-type HEK-293T cell lysate at 10 µg

**Lane 2 :** GOLM1 knockout HEK-293T cell lysate at 10 µg

**Lane 3 :** U-2 OS cell lysate at 20 µg

**Lane 4 :** HepG2 cell lysate at 20 µg

**Lane 5 :** MDA-MB-231 cell lysate at 20 µg

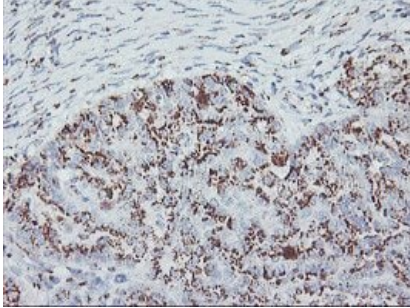
**Lane 6 :** LNCaP cell lysate at 20 µg

Performed under reducing conditions.

**Predicted band size:** 45 kDa

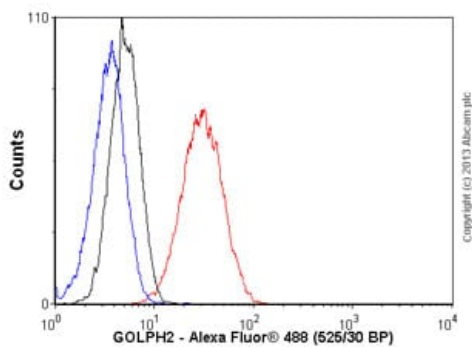
**Observed band size:** 70-75 kDa

False colour image of Western blot: Anti-GOLPH2 antibody [OTI6C9] staining at 1/500 dilution, shown in green; Rabbit anti-alpha Tubulin antibody [EP1332Y] ([ab52866](#)) loading control staining at 1/20000 dilution, shown in red. In Western blot, ab119800 was shown to bind specifically to GOLPH2. A band was observed at 70-75 kDa in wild-type HEK-293T cell lysates with no signal observed at this size in GOLM1 knockout cell line [ab266505](#) (knockout cell lysate [ab257976](#)). To generate this image, wild-type and GOLM1 knockout HEK-293T cell lysates were analysed. First, samples were run on an SDS-PAGE gel then transferred onto a nitrocellulose membrane. Membranes were blocked in 5% milk in TBS-0.1 % Tween<sup>®</sup> 20 (TBS-T) before incubation with primary antibodies overnight at 4°C. Blots were washed four times in TBS-T, incubated with secondary antibodies for 1 h at room temperature, washed again four times then imaged. Secondary antibodies used were Goat anti-Mouse IgG H&L (IRDye<sup>®</sup> 800CW) preabsorbed ([ab216772](#)) and Goat anti-Rabbit IgG H&L (IRDye<sup>®</sup> 680RD) preabsorbed ([ab216777](#)) at 1/20000 dilution.



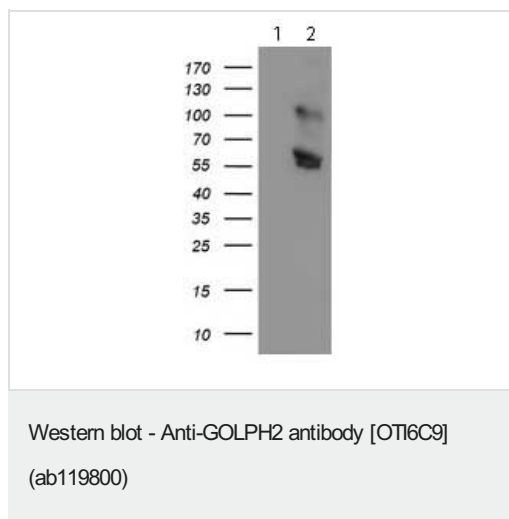
Paraffin-embedded human ovary adenocarcinoma tissue stained for GOLPH2 using ab119800 at 1/150 dilution in immunohistochemical analysis.

Immunohistochemistry (Formalin/PFA-fixed paraffin-embedded sections) - Anti-GOLPH2 antibody [OTI6C9] (ab119800)



Flow Cytometry (Intracellular) - Anti-GOLPH2 antibody [OTI6C9] (ab119800)

Overlay histogram showing HeLa cells stained with ab119800 (red line). The cells were fixed with 80% methanol (5 min) and then permeabilized with 0.1% PBS-Tween for 20 min. The cells were then incubated in 1x PBS / 10% normal goat serum / 0.3M glycine to block non-specific protein-protein interactions followed by the antibody (ab119800, 1µg/1x10<sup>6</sup> cells) for 30 min at 22°C. The secondary antibody used was Alexa Fluor® 488 goat anti-mouse IgG (H&L) ([ab150113](#)) at 1/2000 dilution for 30 min at 22°C. Isotype control antibody (black line) was mouse IgG1 [ICIGG1] ([ab91353](#), 1µg/1x10<sup>6</sup> cells) used under the same conditions. Unlabelled sample (blue line) was also used as a control. Acquisition of >5,000 events were collected using a 20mW Argon ion laser (488nm) and 525/30 bandpass filter.



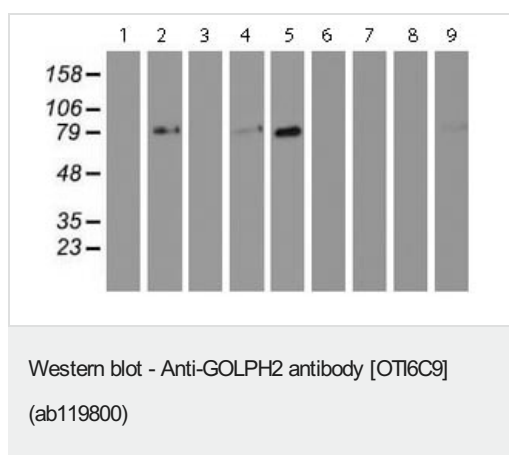
**All lanes :** Anti-GOLPH2 antibody [OTI6C9] (ab119800) at 1/500 dilution

**Lane 1 :** HEK293T cell lysate transfected with pCMV6-ENTRY control

**Lane 2 :** HEK293T cell lysate transfected with pCMV6-ENTRY GOLPH2

Lysates/proteins at 5 µg per lane.

**Predicted band size:** 45 kDa



**All lanes :** Anti-GOLPH2 antibody [OTI6C9] (ab119800) at 1/500 dilution

**Lane 1 :** HepG2 (human liver hepatocellular carcinoma cell line) cell extract

**Lane 2 :** HeLa (human epithelial cell line from cervix adenocarcinoma) cell extract

**Lane 3 :** SVT2 cell extract

**Lane 4 :** A549 (human lung carcinoma cell line) cell extract

**Lane 5 :** COS-7 (african green monkey kidney fibroblast-like cell line) cell extract

**Lane 6 :** Jurkat (human T cell leukemia cell line from peripheral blood) cell extract

**Lane 7 :** MDCK (canine kidney cell line) cell extract

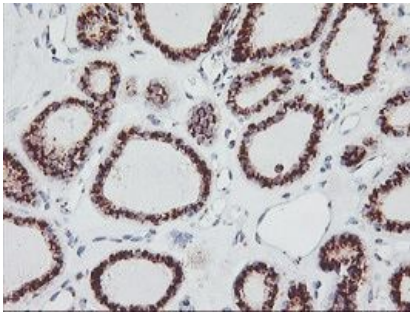
**Lane 8 :** PC-12 (rat adrenal gland pheochromocytoma cell line) cell extract

**Lane 9 :** MCF7 (human breast adenocarcinoma cell line) cell extract

Lysates/proteins at 35 µg per lane.

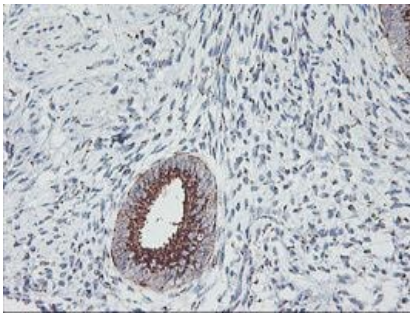
**Predicted band size:** 45 kDa

HEK293T cell lysates were generated from transient transfection of the cDNA clone (RC200086)



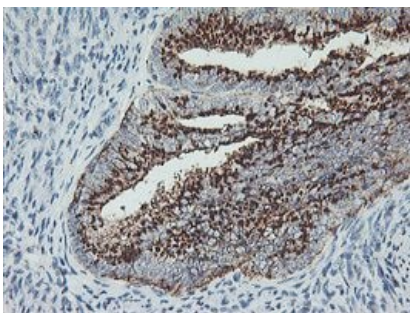
Paraffin-embedded human thyroid carcinoma tissue stained for GOLPH2 using ab119800 at 1/150 dilution in immunohistochemical analysis.

Immunohistochemistry (Formalin/PFA-fixed paraffin-embedded sections) - Anti-GOLPH2 antibody [OTI6C9] (ab119800)



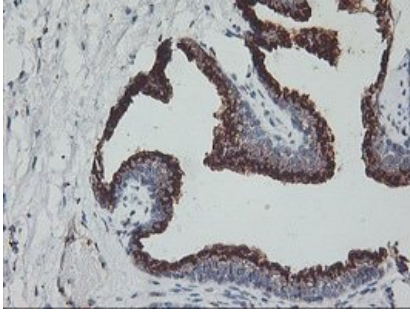
Paraffin-embedded human endometrium tissue stained for GOLPH2 using ab119800 at 1/150 dilution in immunohistochemical analysis.

Immunohistochemistry (Formalin/PFA-fixed paraffin-embedded sections) - Anti-GOLPH2 antibody [OTI6C9] (ab119800)



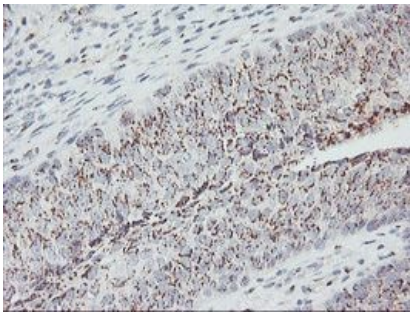
Paraffin-embedded human endometrium adenocarcinoma tissue stained for GOLPH2 using ab119800 at 1/150 dilution in immunohistochemical analysis.

Immunohistochemistry (Formalin/PFA-fixed paraffin-embedded sections) - Anti-GOLPH2 antibody [OTI6C9] (ab119800)



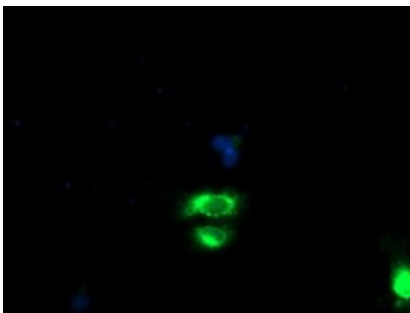
Paraffin-embedded human prostate tissue stained for GOLPH2 using ab119800 at 1/150 dilution in immunohistochemical analysis.

Immunohistochemistry (Formalin/PFA-fixed paraffin-embedded sections) - Anti-GOLPH2 antibody [OTI6C9] (ab119800)



Paraffin-embedded human bladder carcinoma tissue stained for GOLPH2 using ab119800 at 1/150 dilution in immunohistochemical analysis.

Immunohistochemistry (Formalin/PFA-fixed paraffin-embedded sections) - Anti-GOLPH2 antibody [OTI6C9] (ab119800)



COS-7 (african green monkey kidney fibroblast-like cell line) cells transiently transfected by pCMV6-ENTRY GOLPH2 stained for GOLPH2 (green) using ab119800 at 1/100 dilution in ICC/IF.

Immunocytochemistry/ Immunofluorescence - Anti-GOLPH2 antibody [OTI6C9] (ab119800)

**Please note:** All products are "FOR RESEARCH USE ONLY. NOT FOR USE IN DIAGNOSTIC PROCEDURES"

**Our Abpromise to you: Quality guaranteed and expert technical support**

- Replacement or refund for products not performing as stated on the datasheet
- Valid for 12 months from date of delivery
- Response to your inquiry within 24 hours
- We provide support in Chinese, English, French, German, Japanese and Spanish
- Extensive multi-media technical resources to help you
- We investigate all quality concerns to ensure our products perform to the highest standards

If the product does not perform as described on this datasheet, we will offer a refund or replacement. For full details of the Abpromise, please visit <https://www.abcam.cn/abpromise> or contact our technical team.

#### **Terms and conditions**

---

- Guarantee only valid for products bought direct from Abcam or one of our authorized distributors