

Anti-GOLPH2 antibody ab92612

[2 References](#) [3 图像](#)

概述

产品名称	Anti-GOLPH2抗体
描述	兔多克隆抗体to GOLPH2
宿主	Rabbit
特异性	ab92612 will not recognize GOLPH1 or GOLPH3.
经测试应用	适用于: ICC/IF, WB, IHC-P
种属反应性	与反应: Rat
免疫原	Synthetic 18 amino acid peptide from near the center of Human GOLPH2 (GenBank accession no. EAW62705).
常规说明	<p>The Life Science industry has been in the grips of a reproducibility crisis for a number of years. Abcam is leading the way in addressing this with our range of recombinant monoclonal antibodies and knockout edited cell lines for gold-standard validation. Please check that this product meets your needs before purchasing.</p> <p>If you have any questions, special requirements or concerns, please send us an inquiry and/or contact our Support team ahead of purchase. Recommended alternatives for this product can be found below, along with publications, customer reviews and Q&As</p>

性能

形式	Liquid
存放说明	Shipped at 4°C. Store at +4°C.
存储溶液	pH: 7.2 Preservative: 0.02% Sodium azide Constituent: PBS
纯度	Immunogen affinity purified
克隆	多克隆
同种型	IgG

应用

The Abpromise guarantee

Abpromise™ 承诺保证使用ab92612于以下的经测试应用

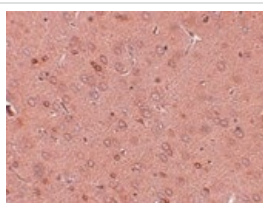
“应用说明”部分 下显示的仅为推荐的起始稀释度;实际最佳的稀释度/浓度应由使用者检定。

应用	Ab评论	说明
ICC/IF		Use a concentration of 20 µg/ml.
WB		Use a concentration of 0.25 - 0.5 µg/ml. Predicted molecular weight: 45 kDa.
IHC-P		Use at an assay dependent concentration.

靶标

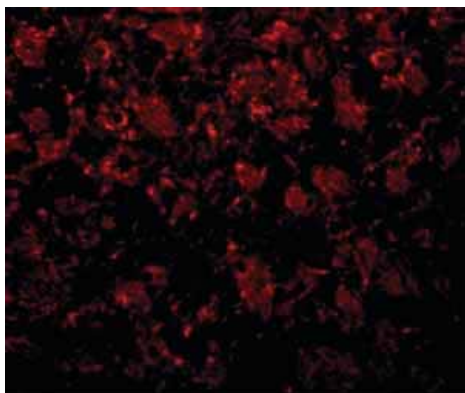
功能	Unknown. Cellular response protein to viral infection.
组织特异性	Widely expressed. Highly expressed in colon, prostate, trachea and stomach. Expressed at lower level in testis, muscle, lymphoid tissues, white blood cells and spleen. Predominantly expressed by cells of the epithelial lineage. Expressed at low level in normal liver. Expression significantly increases in virus (HBV, HCV) infected liver. Expression does not increase in liver disease due to non-viral causes (alcohol-induced liver disease, autoimmune hepatitis). Increased expression in hepatocytes appears to be a general feature of advanced liver disease. In liver tissue from patients with adult giant-cell hepatitis (GCH), it is strongly expressed in hepatocyte-derived syncytial giant cells. Constitutively expressed by biliary epithelial cells but not by hepatocytes.
序列相似性	Belongs to the GOLM1/CASC4 family.
翻译后修饰	Glycosylated. Phosphorylation sites are present in the extracellular medium.
细胞定位	Golgi apparatus > cis-Golgi network membrane. Early Golgi. Cycles via the cell surface and endosomes upon luminal pH disruption.

图片



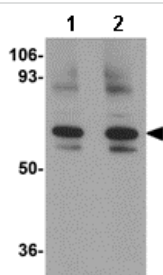
Immunohistochemistry of rat brain tissue with ab92612 at 2.5 µg/mL.

Immunohistochemistry (Formalin/PFA-fixed paraffin-embedded sections) - Anti-GOLPH2 antibody (ab92612)



Immunocytochemistry/ Immunofluorescence - Anti-GOLPH2 antibody (ab92612)

Immunofluorescence of GOLPH2 in rat brain tissue with ab92612 at 20 $\mu\text{g}/\text{mL}$.



Western blot - Anti-GOLPH2 antibody (ab92612)

Lane 1 : Anti-GOLPH2 antibody (ab92612) at 0.25 $\mu\text{g}/\text{ml}$

Lane 2 : Anti-GOLPH2 antibody (ab92612) at 0.5 $\mu\text{g}/\text{ml}$

All lanes : Rat brain tissue lysate

Lysates/proteins at 15 μg per lane.

Predicted band size: 45 kDa

Please note: All products are "FOR RESEARCH USE ONLY. NOT FOR USE IN DIAGNOSTIC PROCEDURES"

Our Abpromise to you: Quality guaranteed and expert technical support

- Replacement or refund for products not performing as stated on the datasheet
- Valid for 12 months from date of delivery
- Response to your inquiry within 24 hours
- We provide support in Chinese, English, French, German, Japanese and Spanish
- Extensive multi-media technical resources to help you
- We investigate all quality concerns to ensure our products perform to the highest standards

If the product does not perform as described on this datasheet, we will offer a refund or replacement. For full details of the Abpromise, please visit <https://www.abcam.cn/abpromise> or contact our technical team.

Terms and conditions

- Guarantee only valid for products bought direct from Abcam or one of our authorized distributors