

Anti-GNAI1 antibody [EPR9441(B)] ab140125

重组 RabMAb

☆☆☆☆ 2 Abreviews 3 References 5 图像

概述

产品名称	Anti-GNAI1抗体[EPR9441(B)]
描述	兔单克隆抗体[EPR9441(B)] to GNAI1
宿主	Rabbit
特异性	The immunogenic sequence of ab140125 has 92.9% homology with GNAI3 and 64% (4 continuous residues) homology with GNAI2 which might cause cross reactivity with GNAI3 and GNAI2.
经测试应用	适用于: Flow Cyt (Intra), WB, IHC-P 不适用于: IP
种属反应性	与反应: Human 预测可用于: Mouse, Rat
免疫原	Synthetic peptide. This information is proprietary to Abcam and/or its suppliers.
阳性对照	SH-SY5Y, U-87 MG, Human glioma, and Human fetal brain lysates; Human endometrial carcinoma and thyroid carcinoma tissues.
常规说明	<p>This product is a recombinant monoclonal antibody, which offers several advantages including:</p> <ul style="list-style-type: none">- High batch-to-batch consistency and reproducibility- Improved sensitivity and specificity- Long-term security of supply- Animal-free production <p>For more information see here.</p> <p>Our RabMAb[®] technology is a patented hybridoma-based technology for making rabbit monoclonal antibodies. For details on our patents, please refer to RabMAb[®] patents.</p>

性能

形式	Liquid
存放说明	Shipped at 4°C. Store at -20°C.
存储溶液	pH: 7.2 Preservative: 0.01% Sodium azide Constituents: 9% PBS, 40% Glycerol (glycerin, glycerine), 0.05% BSA, 50% Tissue culture supernatant

纯度	Protein A purified
克隆	单克隆
克隆编号	EPR9441(B)
同种型	IgG

应用

The Abpromise guarantee **Abpromise™承诺保证使用ab140125于以下的经测试应用**

“应用说明”部分下显示的仅为推荐的起始稀释度;实际最佳的稀释度/浓度应由使用者检定。

应用	Ab评论	说明
Flow Cyt (Intra)		1/999 - 1/9999. ab172730 - Rabbit monoclonal IgG, is suitable for use as an isotype control with this antibody.
WB	★☆☆☆☆ (1)	1/1000 - 1/10000. Predicted molecular weight: 40 kDa.
IHC-P		1/50 - 1/100. Perform heat mediated antigen retrieval before commencing with IHC staining protocol.

应用说明 Is unsuitable for IP.

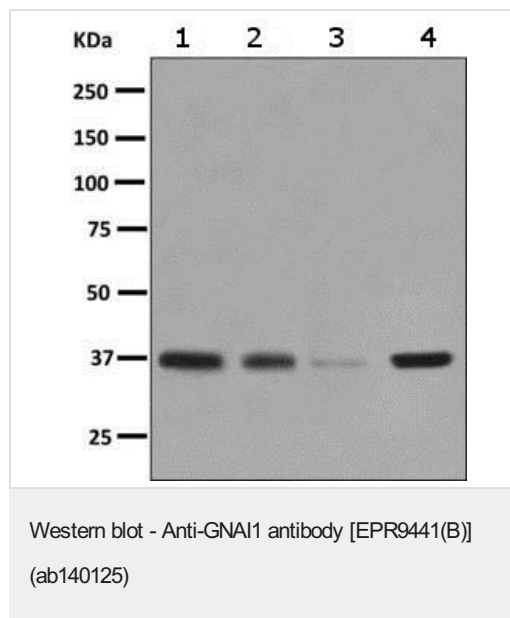
靶标

功能	Guanine nucleotide-binding proteins (G proteins) are involved as modulators or transducers in various transmembrane signaling systems. The G(i) proteins are involved in hormonal regulation of adenylate cyclase: they inhibit the cyclase in response to beta-adrenergic stimuli. The inactive GDP-bound form prevents the association of RGS14 with centrosomes and is required for the translocation of RGS14 from the cytoplasm to the plasma membrane. May play a role in cell division.
----	--

序列相似性 Belongs to the G-alpha family. G(i/o/t/z) subfamily.

细胞定位 Nucleus. Cytoplasm. Cell membrane. Cytoplasm > cytoskeleton > centrosome. Localized at the plasma membrane throughout mitosis. Colocalizes with RIC8A and RGS14 at the plasma membrane (By similarity). Localizes in the centrosomes of interphase and mitotic cells, but not in centrosomes during cytokinesis. Detected at the cleavage furrow or the midbody.

图片



All lanes : Anti-GNAI1 antibody [EPR9441(B)] (ab140125) at 1/1000 dilution

Lane 1 : SH-SY5Y cell lysate

Lane 2 : U-87 MG cell lysate

Lane 3 : Human glioma tissue lysate

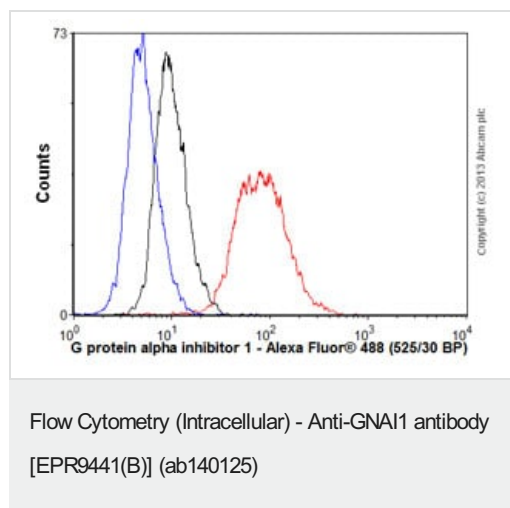
Lane 4 : Human fetal brain tissue lysate

Lysates/proteins at 10 µg per lane.

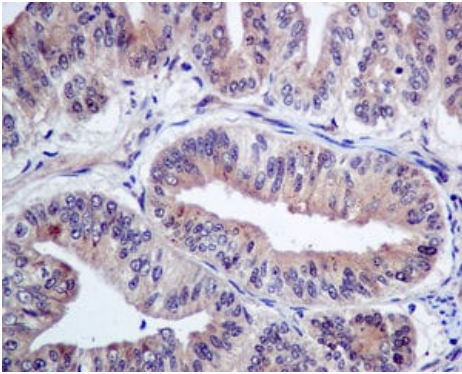
Secondary

All lanes : Goat anti-rabbit HRP conjugated at 1/2000 dilution

Predicted band size: 40 kDa



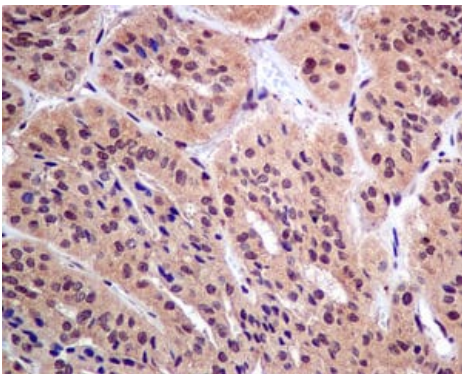
Overlay histogram showing SHSY-5Y cells stained with ab140125 (red line). The cells were fixed with 4% paraformaldehyde (10 min) and then permeabilized with 0.1% PBS-Tween for 20 min. The cells were then incubated in 1x PBS / 10% normal goat serum / 0.3M glycine to block non-specific protein-protein interactions followed by the antibody (ab140125, 1/9999 dilution) for 30 min at 22°C. The secondary antibody used was Alexa Fluor® 488 goat anti-rabbit IgG (H&L) ([ab150077](#)) at 1/2000 dilution for 30 min at 22°C. Isotype control antibody (black line) was rabbit IgG (monoclonal) (0.1µg/1x10⁶ cells) used under the same conditions. Unlabelled sample (blue line) was also used as a control. Acquisition of >5,000 events were collected using a 20mW Argon ion laser (488nm) and 525/30 bandpass filter. This antibody gave a positive signal in SHSY-5Y cells fixed with 80% methanol (5 min)/permeabilized with 0.1% PBS-Tween for 20 min used under the same conditions.



Immunohistochemistry (Formalin/PFA-fixed paraffin-embedded sections) - Anti-GNAI1 antibody
[EPR9441(B)] (ab140125)

Immunohistochemical analysis of paraffin-embedded Human endometrial carcinoma tissue labelling GNAI1 with ab140125 at 1/50 dilution.

Perform heat mediated antigen retrieval before commencing with IHC staining protocol.



Immunohistochemistry (Formalin/PFA-fixed paraffin-embedded sections) - Anti-GNAI1 antibody
[EPR9441(B)] (ab140125)

Immunohistochemical analysis of paraffin-embedded Human thyroid carcinoma tissue labelling GNAI1 with ab140125 at 1/50 dilution.

Perform heat mediated antigen retrieval before commencing with IHC staining protocol.

Why choose a recombinant antibody?



Research with confidence
Consistent and reproducible results



Long-term and scalable supply
Recombinant technology



Success from the first experiment
Confirmed specificity



Ethical standards compliant
Animal-free production

Anti-GNAI1 antibody [EPR9441(B)] (ab140125)

Please note: All products are "FOR RESEARCH USE ONLY. NOT FOR USE IN DIAGNOSTIC PROCEDURES"

Our Abpromise to you: Quality guaranteed and expert technical support

- Replacement or refund for products not performing as stated on the datasheet
- Valid for 12 months from date of delivery
- Response to your inquiry within 24 hours
- We provide support in Chinese, English, French, German, Japanese and Spanish
- Extensive multi-media technical resources to help you
- We investigate all quality concerns to ensure our products perform to the highest standards

If the product does not perform as described on this datasheet, we will offer a refund or replacement. For full details of the Abpromise, please visit <https://www.abcam.cn/abpromise> or contact our technical team.

Terms and conditions

- Guarantee only valid for products bought direct from Abcam or one of our authorized distributors