

# Anti-GNAI1 + GNAI2 antibody ab3522

**5 References**   **2 图像**

### 概述

产品名称	Anti-GNAI1 + GNAI2抗体
描述	兔多克隆抗体to GNAI1 + GNAI2
宿主	Rabbit
特异性	Similarity with other sequences from the G protein family is predicted but has not being tested empirically.
经测试应用	适用于: IHC-P, ICC
种属反应性	与反应: Human  预测可用于: Chicken, Guinea pig, Hamster, Cow, Dog, Xenopus laevis, Starfish 
免疫原	Synthetic peptide corresponding to Human GNAI1 + GNAI2 aa 300-400. Database link: <b>P63096</b> (Peptide available as <b>ab5006</b> )   <a href="#">Run BLAST with</a>  <a href="#">Run BLAST with</a>
阳性对照	IHC-P: Human tonsil tissue. ICC: SH-SY5Y cells.
常规说明	<p>The Life Science industry has been in the grips of a reproducibility crisis for a number of years. Abcam is leading the way in addressing this with our range of recombinant monoclonal antibodies and knockout edited cell lines for gold-standard validation. Please check that this product meets your needs before purchasing.</p> <p>If you have any questions, special requirements or concerns, please send us an inquiry and/or contact our Support team ahead of purchase. Recommended alternatives for this product can be found below, along with publications, customer reviews and Q&amp;As</p>

### 性能

形式	Liquid
存放说明	Shipped at 4°C. Store at +4°C short term (1-2 weeks). Upon delivery aliquot. Store at -20°C or -80°C. Avoid freeze / thaw cycle.
存储溶液	Preservative: 0.05% Sodium azide Constituents: 0.1% BSA, 99% PBS
纯度	Immunogen affinity purified
Primary antibody说明	The G protein family of signal transducers includes the alpha, beta, gamma subunits and the effector which are most clearly distinguished by their different alpha chains. The family also

includes Gs and Gi, the stimulatory and inhibitory GTP-binding regulators of adenylate cyclase; Go, a protein of unknown function that is abundantly expressed in brain; and transducin 1 and 2, proteins involved in retinal phototransduction. The G proteins possess GTPase activity and are components of a complex membrane signaling system that includes membrane-bound receptors. The system exists to modulate extracellular signals as they are transmitted into the cell.

**克隆** 多克隆  
**同种型** IgG

## 应用

**The Abpromise guarantee** Abpromise™ 承诺保证使用ab3522于以下的经测试应用

“应用说明”部分 下显示的仅为推荐的起始稀释度;实际最佳的稀释度/浓度应由使用者检定。

应用	Ab评论	说明
IHC-P		Use a concentration of 1 µg/ml. Perform heat mediated antigen retrieval with citrate buffer pH 6 before commencing with IHC staining protocol.
ICC		Use a concentration of 2 µg/ml.

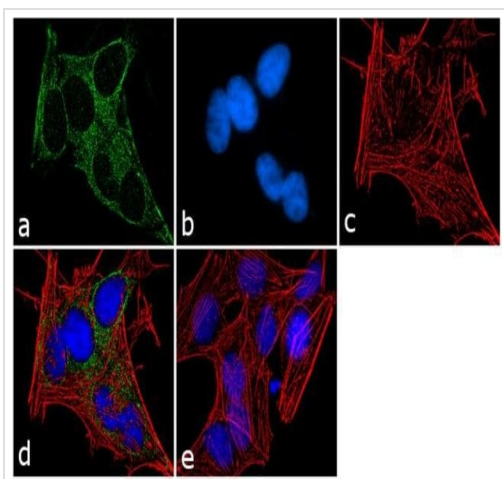
## 靶标

**功能** Guanine nucleotide-binding proteins (G proteins) are involved as modulators or transducers in various transmembrane signaling systems. The G(i) proteins are involved in hormonal regulation of adenylate cyclase: they inhibit the cyclase in response to beta-adrenergic stimuli. The inactive GDP-bound form prevents the association of RGS14 with centrosomes and is required for the translocation of RGS14 from the cytoplasm to the plasma membrane. May play a role in cell division.

**序列相似性** Belongs to the G-alpha family. G(i/o/t/z) subfamily.

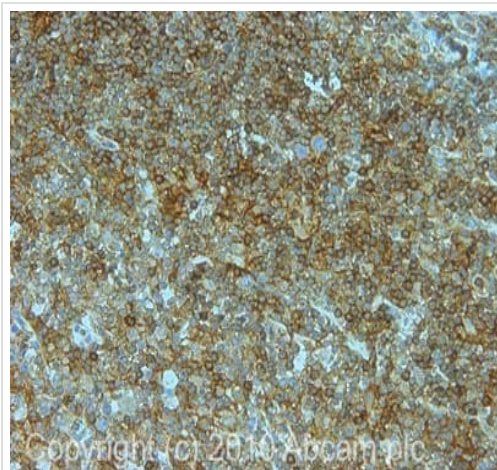
**细胞定位** Nucleus. Cytoplasm. Cell membrane. Cytoplasm > cytoskeleton > centrosome. Localized at the plasma membrane throughout mitosis. Colocalizes with RIC8A and RGS14 at the plasma membrane (By similarity). Localizes in the centrosomes of interphase and mitotic cells, but not in centrosomes during cytokinesis. Detected at the cleavage furrow or the midbody.

## 图片



Immunocytochemistry - Anti-GNAI1 + GNAI2  
antibody (ab3522)

SH-SY5Y cells stained for GNAI1 (green) using ab3522 at 2 µg/mL in immunocytochemical analysis. The nuclei (Panel b: blue) were stained with SlowFade® Gold Antifade Mountant with DAPI, F-actin (Panel c: red) was stained with Alexa Fluor® 555 Rhodamine Phalloidin. Panel e shows the no primary antibody control.



Immunohistochemistry (Formalin/PFA-fixed paraffin-  
embedded sections) - Anti-GNAI1 + GNAI2 antibody  
(ab3522)

IHC image of ab3522 staining in Human tonsil formalin fixed paraffin embedded tissue section, performed on a Leica Bond™ system using the standard protocol F. The section was pre-treated using heat mediated antigen retrieval with sodium citrate buffer (pH6, epitope retrieval solution 1) for 20 mins. The section was then incubated with ab3522, 1 µg/ml, for 15 mins at room temperature and detected using an HRP conjugated compact polymer system. DAB was used as the chromogen. The section was then counterstained with haematoxylin and mounted with DPX.

For other IHC staining systems (automated and non-automated) customers should optimize variable parameters such as antigen retrieval conditions, primary antibody concentration and antibody incubation times.

**Please note:** All products are "FOR RESEARCH USE ONLY. NOT FOR USE IN DIAGNOSTIC PROCEDURES"

**Our Abpromise to you: Quality guaranteed and expert technical support**

- Replacement or refund for products not performing as stated on the datasheet
- Valid for 12 months from date of delivery
- Response to your inquiry within 24 hours
- We provide support in Chinese, English, French, German, Japanese and Spanish
- Extensive multi-media technical resources to help you
- We investigate all quality concerns to ensure our products perform to the highest standards

If the product does not perform as described on this datasheet, we will offer a refund or replacement. For full details of the Abpromise, please visit <https://www.abcam.cn/abpromise> or contact our technical team.

#### **Terms and conditions**

---

- Guarantee only valid for products bought direct from Abcam or one of our authorized distributors