


# Anti-Glypican 1/ GPC1 antibody ab106003

[1 Abreviews](#) [2 References](#) [1 图像](#)

### 概述

|       |   |
|-------|---|
| 产品名称  | Anti-Glypican 1/ GPC1抗体   |
| 描述    | 兔多克隆抗体to Glypican 1/ GPC1   |
| 宿主    | Rabbit  |
| 经测试应用 | 适用于: WB   |
| 种属反应性 | 与反应: Human<br>预测可用于: Cow, Dog, Macaque monkey, Opossum   |
| 免疫原   | A synthetic peptide corresponding to an internal region of Human Glypican 1/ GPC1   |
| 常规说明  | <p>The Life Science industry has been in the grips of a reproducibility crisis for a number of years. Abcam is leading the way in addressing this with our range of recombinant monoclonal antibodies and knockout edited cell lines for gold-standard validation. Please check that this product meets your needs before purchasing.</p> <p>If you have any questions, special requirements or concerns, please send us an inquiry and/or contact our Support team ahead of purchase. Recommended alternatives for this product can be found below, along with publications, customer reviews and Q&amp;As</p> |

### 性能

|      |  |
|------|--|
| 形式   | Liquid   |
| 存放说明 | Shipped at 4°C. Store at -20°C. Stable for 12 months at -20°C.                                     |
| 存储溶液 | Preservative: 0.01% Sodium azide<br>Constituents: 0.42% Potassium phosphate, 0.88% Sodium chloride |
| 纯度   | Protein A purified   |
| 克隆   | 多克隆  |
| 同种型  | IgG  |

### 应用

#### The Abpromise guarantee

**Abpromise™** 承诺保证使用ab106003于以下的经测试应用

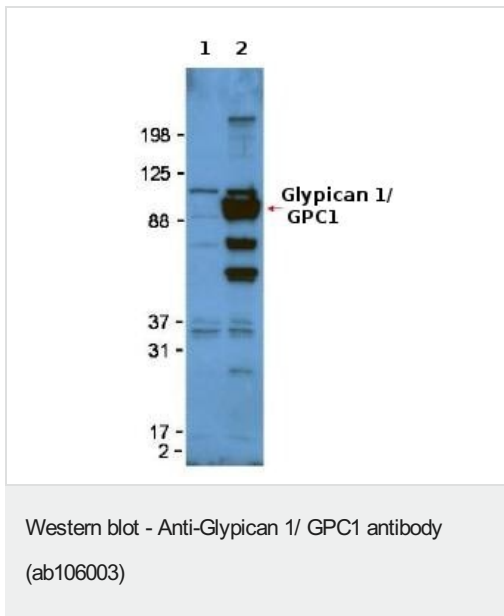
“应用说明”部分下显示的仅为推荐的起始稀释度;实际最佳的稀释度/浓度应由使用者检定。

| 应用 | Ab评论 | 说明  |
|----|------|---|
| WB |      | 1/500 - 1/2000. Predicted molecular weight: 62 kDa. |

## 靶标

|              |   |
|--------------|---|
| <b>功能</b>    | Cell surface proteoglycan that bears heparan sulfate.   |
| <b>序列相似性</b> | Belongs to the glypican family.   |
| <b>翻译后修饰</b> | This cell-associated glypican is further processed to give rise to a medium-released species. |
| <b>细胞定位</b>  | Cell membrane and Secreted > extracellular space.   |

## 图片



**All lanes** : Anti-Glypican 1/ GPC1 antibody (ab106003) at 1/1000 dilution

**Lane 1** : Untransfected 293T whole cell lysate

**Lane 2** : Glypican 1/ GPC1 transfected 293T whole cell lysate

Lysates/proteins at 50 µg per lane.

### Secondary

**All lanes** : HRP Goat-anti-Rabbit IgG at 1/5000 dilution

**Predicted band size:** 62 kDa

The higher molecular weight (110kDa) of transfected Glypican 1/ GPC1 compared with the expected MW is likely due to the presence of an Fc-tag.

**Please note:** All products are "FOR RESEARCH USE ONLY. NOT FOR USE IN DIAGNOSTIC PROCEDURES"

## Our Abpromise to you: Quality guaranteed and expert technical support

- Replacement or refund for products not performing as stated on the datasheet
- Valid for 12 months from date of delivery
- Response to your inquiry within 24 hours
- We provide support in Chinese, English, French, German, Japanese and Spanish
- Extensive multi-media technical resources to help you

- We investigate all quality concerns to ensure our products perform to the highest standards

If the product does not perform as described on this datasheet, we will offer a refund or replacement. For full details of the Abpromise, please visit <https://www.abcam.cn/abpromise> or contact our technical team.

#### **Terms and conditions**

---

- Guarantee only valid for products bought direct from Abcam or one of our authorized distributors