

Anti-Glycophorin C/GPC antibody [EPR4116] ab108925

重组 RabMAb

6 图像

概述

产品名称	Anti-Glycophorin C/GPC抗体[EPR4116]
描述	兔单克隆抗体[EPR4116] to Glycophorin C/GPC
宿主	Rabbit
经测试应用	适用于: WB, IP, IHC-P, Flow Cyt (Intra)
种属反应性	与反应: Human
免疫原	Synthetic peptide. This information is proprietary to Abcam and/or its suppliers.
阳性对照	Flow Cyt: K562 cell lysate; IP: TF-1 lysate.
常规说明	<p>This product is a recombinant monoclonal antibody, which offers several advantages including:</p> <ul style="list-style-type: none">- High batch-to-batch consistency and reproducibility- Improved sensitivity and specificity- Long-term security of supply- Animal-free production <p>For more information see here.</p> <p>Our RabMAb[®] technology is a patented hybridoma-based technology for making rabbit monoclonal antibodies. For details on our patents, please refer to RabMAb[®] patents.</p> <p>Mouse, Rat: We have preliminary internal testing data to indicate this antibody may not react with these species. Please contact us for more information.</p>

性能

形式	Liquid
存放说明	Shipped at 4°C. Store at -20°C.
存储溶液	pH: 7.20 Preservative: 0.05% Sodium azide Constituents: 0.1% BSA, 40% Glycerol (glycerin, glycerine), 9.85% Tris glycine, 50% Tissue culture supernatant
纯度	Protein A purified
克隆	单克隆
克隆编号	EPR4116

同种型

IgG

应用

The Abpromise guarantee

Abpromise™ 承诺保证使用ab108925于以下的经测试应用

“应用说明”部分 下显示的仅为推荐的起始稀释度;实际最佳的稀释度/浓度应由使用者检定。

应用	Ab评论	说明
WB		1/1000 - 1/10000. Predicted molecular weight: 14 kDa.
IP		1/10 - 1/100.
IHC-P		1/100 - 1/250. Perform heat mediated antigen retrieval before commencing with IHC staining protocol.
Flow Cyt (Intra)		1/10000. ab172730 - Rabbit monoclonal IgG, is suitable for use as an isotype control with this antibody.

靶标

功能

This protein is a minor sialoglycoprotein in human erythrocyte membranes. The blood group Gerbich antigens and receptors for Plasmodium falciparum merozoites are most likely located within the extracellular domain. Glycophorin-C plays an important role in regulating the stability of red cells.

组织特异性

Glycophorin-C is expressed in erythrocytes. Glycophorin-D is ubiquitous.

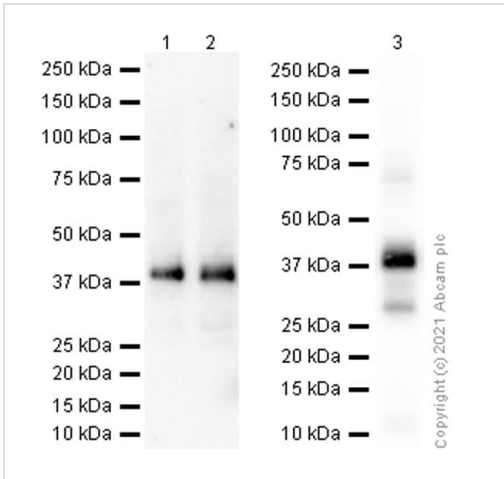
序列相似性

Belongs to the glycophorin-C family.

细胞定位

Cell membrane. Linked to the membrane via band 4.1.

图片



Western blot - Anti-Glycophorin C/GPC antibody [EPR4116] (ab108925)

All lanes : Anti-Glycophorin C/GPC antibody [EPR4116] (ab108925) at 1/1000 dilution (Purified)

Lane 1 : TF-1 (Human Erythroleukemia erythroblast) whole cell lysate

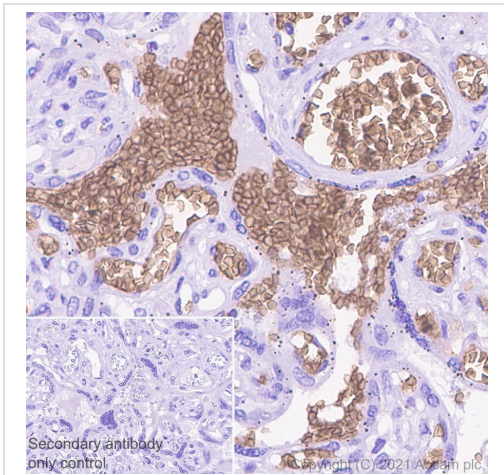
Lane 2 : K-562 (Human chronic myelogenous leukemia lymphoblast) whole cell lysate

Lane 3 : Human red blood lysate

Secondary

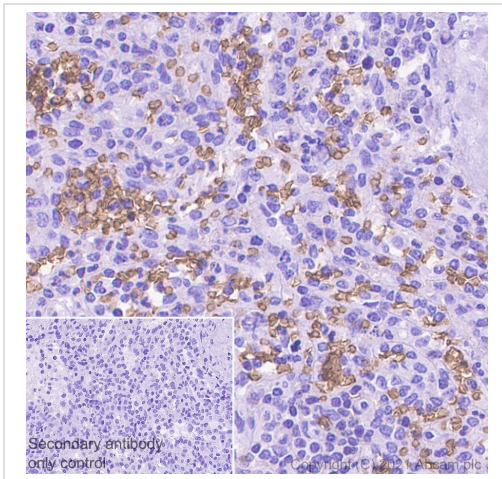
All lanes : Goat Anti-Rabbit IgG (HRP) with minimal cross-reactivity with human IgG at 1/2000 dilution

Predicted band size: 14 kDa



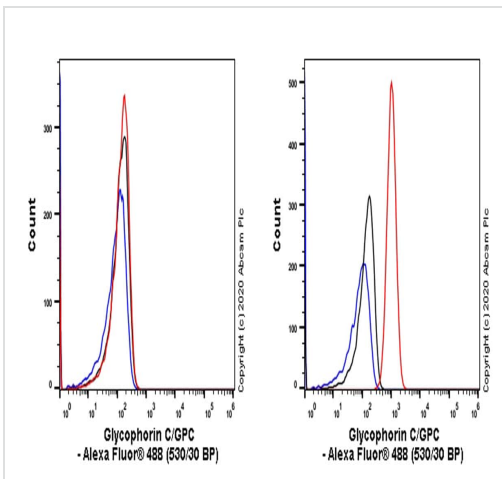
Immunohistochemistry (Formalin/PFA-fixed paraffin-embedded sections) - Anti-Glycophorin C/GPC antibody [EPR4116] (ab108925)

Immunohistochemistry (Formalin/PFA-fixed paraffin-embedded sections) analysis of human placenta tissue sections labeling Glycophorin C/GPC with Purified ab108925 at 1:1500 dilution (0.06 µg/ml). Heat mediated antigen retrieval was performed using Heat mediated antigen retrieval using Bond™ Epitope Retrieval Solution 2 (pH 9.0) . Tissue was counterstained with Hematoxylin. Rabbit specific IHC polymer detection kit HRP/DAB ([ab209101](#)) secondary antibody was used at 1:0 dilution. PBS instead of the primary antibody was used as the negative control.



Immunohistochemistry (Formalin/PFA-fixed paraffin-embedded sections) - Anti-Glycophorin C/GPC antibody [EPR4116] (ab108925)

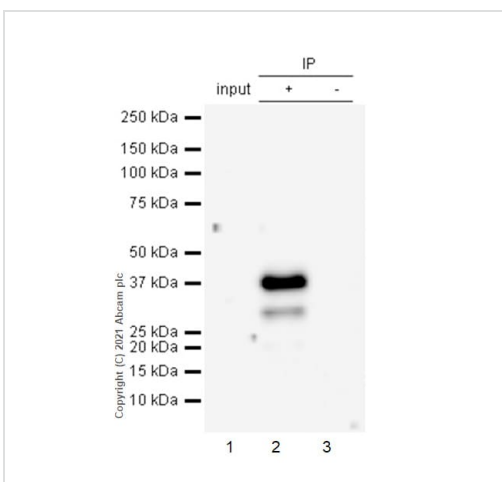
Immunohistochemistry (Formalin/PFA-fixed paraffin-embedded sections) analysis of human spleen tissue sections labeling Glycophorin C/GPC with Purified ab108925 at 1:1500 dilution (0.06 µg/ml). Heat mediated antigen retrieval was performed using Heat mediated antigen retrieval using Bond™ Epitope Retrieval Solution 2 (pH 9.0) . Tissue was counterstained with Hematoxylin. Rabbit specific IHC polymer detection kit HRP/DAB (**ab209101**) secondary antibody was used at 1:0 dilution. PBS instead of the primary antibody was used as the negative control.



Flow Cytometry (Intracellular) - Anti-Glycophorin C/GPC antibody [EPR4116] (ab108925)

Flow Cytometry analysis of A549 (Human lung carcinoma epithelial cell, Left) / K-562 (Human chronic myelogenous leukemia lymphoblast, Right) cells labeling Glycophorin C/GPC with purified ab108925 at 1/10000 dilution (0.1 µg/mL) (Red). Cells were fixed with 4% Paraformaldehyde and permeabilised with 90% Methanol. A Goat anti rabbit IgG (Alexa Fluor® 488, **ab150077**) secondary antibody was used at 1/2000. Isotype control - Rabbit monoclonal IgG (Black). Unlabeled control - Cell without incubation with primary antibody and secondary antibody (Blue).

Negative control: A549.



Immunoprecipitation - Anti-Glycophorin C/GPC antibody [EPR4116] (ab108925)

Glycophorin C/GPC was immunoprecipitated from 0.35 mg TF-1 (Human Erythroleukemia erythroblast) whole cell lysate 10 µg with 108925 at 1/50 dilution (2µg). VeriBlot for IP Detection Reagent (HRP)(**ab131366**) was used at 1/5000 dilution.

Lane 1: TF-1 (Human Erythroleukemia erythroblast) whole cell lysate 10 µg

Lane 2: ab108925 IP in TF-1 whole cell lysate

Lane 3: Rabbit monoclonal IgG (**ab172730**) instead of ab108925 in TF-1 whole cell lysate

Blocking and dilution buffer and concentration: 5% NFD/MBST.

Lower band could be N-Deglycosylated GPC. (PMID: 16461900)

Why choose a recombinant antibody?



Research with confidence
Consistent and reproducible results



Long-term and scalable supply
Recombinant technology



Success from the first experiment
Confirmed specificity



Ethical standards compliant
Animal-free production

Anti-Glycophorin C/GPC antibody [EPR4116]
(ab108925)

Please note: All products are "FOR RESEARCH USE ONLY. NOT FOR USE IN DIAGNOSTIC PROCEDURES"

Our Abpromise to you: Quality guaranteed and expert technical support

- Replacement or refund for products not performing as stated on the datasheet
- Valid for 12 months from date of delivery
- Response to your inquiry within 24 hours
- We provide support in Chinese, English, French, German, Japanese and Spanish
- Extensive multi-media technical resources to help you
- We investigate all quality concerns to ensure our products perform to the highest standards

If the product does not perform as described on this datasheet, we will offer a refund or replacement. For full details of the Abpromise, please visit <https://www.abcam.cn/abpromise> or contact our technical team.

Terms and conditions

- Guarantee only valid for products bought direct from Abcam or one of our authorized distributors