

Anti-Glycophorin C/GPC antibody [EPR4115] ab108619

重组 RabMAb

3 References 2 图像

概述

产品名称	Anti-Glycophorin C/GPC抗体[EPR4115]
描述	兔单克隆抗体[EPR4115] to Glycophorin C/GPC
宿主	Rabbit
经测试应用	适用于: WB 不适用于: IHC-P
种属反应性	与反应: Human
免疫原	Synthetic peptide. This information is proprietary to Abcam and/or its suppliers.
阳性对照	TF1 and K562 cell lysates.
常规说明	<p>This product is a recombinant monoclonal antibody, which offers several advantages including:</p> <ul style="list-style-type: none">- High batch-to-batch consistency and reproducibility- Improved sensitivity and specificity- Long-term security of supply- Animal-free production <p>For more information see here.</p> <p>Our RabMAb[®] technology is a patented hybridoma-based technology for making rabbit monoclonal antibodies. For details on our patents, please refer to RabMAb[®] patents.</p> <p>Mouse, Rat: We have preliminary internal testing data to indicate this antibody may not react with these species. Please contact us for more information.</p>

性能

形式	Liquid
存放说明	Shipped at 4°C. Store at -20°C. Stable for 12 months at -20°C.
存储溶液	pH: 7.20 Preservative: 0.05% Sodium azide Constituents: 0.1% BSA, 40% Glycerol (glycerin, glycerine), 9.85% Tris glycine, 50% Tissue culture supernatant
纯度	Tissue culture supernatant
克隆	单克隆

同种型 IgG

The Abpromise guarantee

“应用说明”部分 下显示的仅为推荐的起始稀释度;实际最佳的稀释度/浓度应由使用者检定。

应用	Ab评论	说明
WB		1/1000 - 1/10000. Predicted molecular weight: 14 kDa.

应用说明 Is unsuitable for IHC-P.

功能

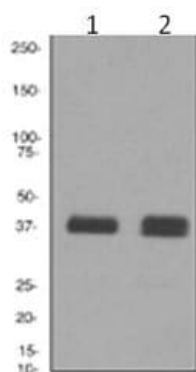
This protein is a minor sialoglycoprotein in human erythrocyte membranes. The blood group Gerbich antigens and receptors for *Plasmodium falciparum* merozoites are most likely located within the extracellular domain. Glycophorin-C plays an important role in regulating the stability of red cells.

组织特异性 Glycophorin-C is expressed in erythrocytes. Glycophorin-D is ubiquitous.

序列相似性 Belongs to the glycophorin-C family.

细胞定位 Cell membrane. Linked to the membrane via band 4.1.

图片



All lanes : Anti-Glycophorin C/GPC antibody [EPR4115] (ab108619) at 1/1000 dilution

Lane 1 : TF1 cell lysates

Lane 2 : K562 cell lysates

Lysates/proteins at 10 µg per lane.

Predicted band size: 14 kDa

Western blot - Anti-Glycophorin C/GPC antibody
[EPR4115] (ab108619)

Why choose a recombinant antibody?



Research with confidence
Consistent and reproducible results



Long-term and scalable supply
Recombinant technology



Success from the first experiment
Confirmed specificity



Ethical standards compliant
Animal-free production

Anti-Glycophorin C/GPC antibody [EPR4115]
(ab108619)

Please note: All products are "FOR RESEARCH USE ONLY. NOT FOR USE IN DIAGNOSTIC PROCEDURES"

Our Abpromise to you: Quality guaranteed and expert technical support

- Replacement or refund for products not performing as stated on the datasheet
- Valid for 12 months from date of delivery
- Response to your inquiry within 24 hours
- We provide support in Chinese, English, French, German, Japanese and Spanish
- Extensive multi-media technical resources to help you
- We investigate all quality concerns to ensure our products perform to the highest standards

If the product does not perform as described on this datasheet, we will offer a refund or replacement. For full details of the Abpromise, please visit <https://www.abcam.cn/abpromise> or contact our technical team.

Terms and conditions

- Guarantee only valid for products bought direct from Abcam or one of our authorized distributors