

# Anti-Glycogen synthase 1/GYS1 (phospho S641) antibody [EP852Y] ab81230

重组 RabMAb

★★★★★ [5 Abreviews](#) [11 References](#) [5 图像](#)

### 概述

产品名称	Anti-Glycogen synthase 1/GYS1 (phospho S641)抗体[EP852Y]
描述	兔单克隆抗体[EP852Y] to Glycogen synthase 1/GYS1 (phospho S641)
宿主	Rabbit
经测试应用	<b>适用于:</b> Dot blot, WB, IHC-P <b>不适用于:</b> Flow Cyt or ICC/IF
种属反应性	<b>与反应:</b> Mouse, Human
免疫原	Synthetic peptide. This information is proprietary to Abcam and/or its suppliers.
阳性对照	WB: Mouse muscle and Mouse muscle treated with AP lysates; HeLa and HeLa treated with insulin at 20 ug/mL for 15 minutes whole cell lysates. IHC: Human liver tissue.
常规说明	<p>This product is a recombinant monoclonal antibody, which offers several advantages including:</p> <ul style="list-style-type: none"><li>- High batch-to-batch consistency and reproducibility</li><li>- Improved sensitivity and specificity</li><li>- Long-term security of supply</li><li>- Animal-free production</li></ul> <p>For more information <a href="#">see here</a>.</p> <p>Our RabMAb<sup>®</sup> technology is a patented hybridoma-based technology for making rabbit monoclonal antibodies. For details on our patents, please refer to <a href="#">RabMAb<sup>®</sup> patents</a>.</p> <p>Rat: We have preliminary internal testing data to indicate this antibody may not react with this species. Please contact us for more information.</p>

### 性能

形式	Liquid
存放说明	Shipped at 4°C. Store at +4°C short term (1-2 weeks). Upon delivery aliquot. Store at -20°C. Avoid freeze / thaw cycle.
存储溶液	pH: 7.20 Preservative: 0.01% Sodium azide Constituents: 9% PBS, 40% Glycerol (glycerin, glycerine), 0.05% BSA, 50% Tissue culture

	supernatant
纯度	Protein A purified
克隆	单克隆
克隆编号	EP852Y
同种型	IgG

## 应用

**The Abpromise guarantee**      **Abpromise™** 承诺保证使用ab81230于以下的经测试应用

“应用说明”部分下显示的仅为推荐的起始稀释度;实际最佳的稀释度/浓度应由使用者检定。

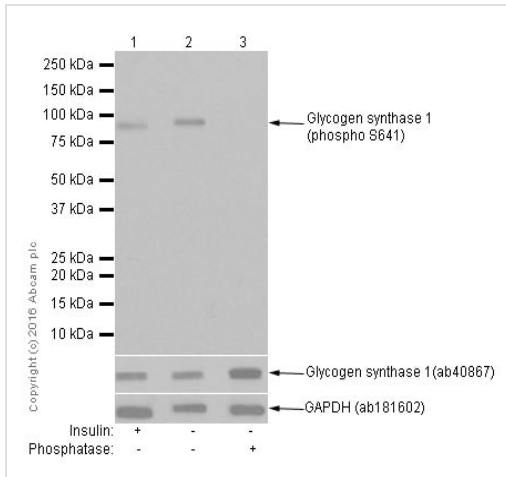
应用	Ab评论	说明
Dot blot		1/1000.
WB	★★★★★ (3)	1/2000 - 1/10000. Predicted molecular weight: 85 kDa.
IHC-P	★★★★★ (1)	1/100 - 1/250. Perform heat mediated antigen retrieval with Tris/EDTA buffer pH 9.0 before commencing with IHC staining protocol.

**应用说明**      Is unsuitable for Flow Cyt or ICC/IF.

## 靶标

<b>功能</b>	Transfers the glycosyl residue from UDP-Glc to the non-reducing end of alpha-1,4-glucan.
<b>通路</b>	Glycan biosynthesis; glycogen biosynthesis.
<b>疾病相关</b>	Defects in GYS1 are the cause of muscle glycogen storage disease type 0 (GSD0b) [MIM:611556]; also known as muscle glycogen synthase deficiency. GSD0b is a metabolic disorder characterized by fasting hypoglycemia presenting in infancy or early childhood. The role of muscle glycogen is to provide critical energy during bursts of activity and sustained muscle work.
<b>序列相似性</b>	Belongs to the glycosyltransferase 3 family.

## 图片



Western blot - Anti-Glycogen synthase 1/GYS1 (phospho S641) antibody [EP852Y] (ab81230)

**All lanes :** Anti-Glycogen synthase 1/GYS1 (phospho S641) antibody [EP852Y] (ab81230) at 1/2000 dilution

**Lane 1 :** HeLa (Human epithelial cell line from cervix adenocarcinoma) treated with insulin at 20 ug/mL for 15 minutes. Whole cell lysates

**Lane 2 :** Untreated HeLa (Human epithelial cell line from cervix adenocarcinoma) whole cell lysates

**Lane 3 :** Untreated HeLa (Human epithelial cell line from cervix adenocarcinoma) whole cell lysates. Then the membrane was incubated with phosphatase.

Lysates/proteins at 15 µg per lane.

### Secondary

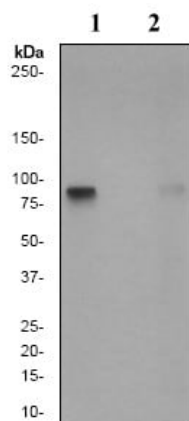
**All lanes :** Goat Anti-Rabbit IgG H&L (HRP) (**ab97051**) at 1/100000 dilution

**Predicted band size:** 85 kDa

**Observed band size:** 85 kDa

**Exposure time:** 1 second

Blocking/Diluting buffer and concentration: 5% NFDM/TBST



Western blot - Anti-Glycogen synthase 1/GYS1 (phospho S641) antibody [EP852Y] (ab81230)

**All lanes :** Anti-Glycogen synthase 1/GYS1 (phospho S641) antibody [EP852Y] (ab81230) at 1/10000 dilution

**Lane 1 :** Mouse muscle tissue lysate, untreated

**Lane 2 :** Mouse muscle tissue lysate, treated with AP

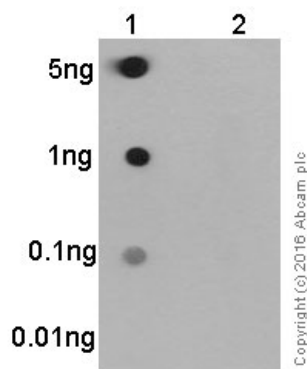
Lysates/proteins at 10 µg per lane.

#### Secondary

**All lanes :** HRP labeled Goat anti-Rabbit at 1/2000 dilution

**Predicted band size:** 85 kDa

**Observed band size:** 85 kDa

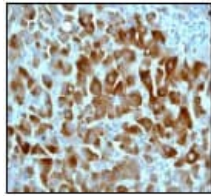


Dot Blot - Anti-Glycogen synthase 1/GYS1 (phospho S641) antibody [EP852Y] (ab81230)

Dot blot analysis of glycogen synthase 1/GYS1 (phospho S641) phospho peptide (Lane 1) and glycogen synthase 1/GYS1 non-phospho peptide (Lane 2) labeling synthase 1 (phospho S641) with ab81230 at a dilution of 1/1000. [ab97051](#) (Peroxidase conjugated goat anti-rabbit IgG) (H+L) at 1/100 000 was used as the secondary antibody.

Blocking and diluting buffer: 5% NFDm/TBST.

Exposure time: 3 minutes.



Immunohistochemical analysis of Human liver tissue, using 1/100 ab81230.

Perform heat mediated antigen retrieval with EDTA buffer pH 9 before commencing with IHC staining protocol.

Immunohistochemistry (Formalin/PFA-fixed paraffin-embedded sections) - Anti-Glycogen synthase 1/GYS1 (phospho S641) antibody [EP852Y] (ab81230)

### Why choose a recombinant antibody?



**Research with confidence**  
Consistent and reproducible results



**Long-term and scalable supply**  
Recombinant technology



**Success from the first experiment**  
Confirmed specificity



**Ethical standards compliant**  
Animal-free production

Anti-Glycogen synthase 1/GYS1 (phospho S641) antibody [EP852Y] (ab81230)

**Please note:** All products are "FOR RESEARCH USE ONLY. NOT FOR USE IN DIAGNOSTIC PROCEDURES"

### Our Abpromise to you: Quality guaranteed and expert technical support

- Replacement or refund for products not performing as stated on the datasheet
- Valid for 12 months from date of delivery
- Response to your inquiry within 24 hours
- We provide support in Chinese, English, French, German, Japanese and Spanish
- Extensive multi-media technical resources to help you
- We investigate all quality concerns to ensure our products perform to the highest standards

If the product does not perform as described on this datasheet, we will offer a refund or replacement. For full details of the Abpromise, please visit <https://www.abcam.cn/abpromise> or contact our technical team.

### Terms and conditions

- Guarantee only valid for products bought direct from Abcam or one of our authorized distributors