

### Anti-Glycogen synthase 1/GYS1 antibody [EP817Y] ab40810

敲除验证
重组
RabMAb

★★★★☆
[6 Abreviews](#)
[19 References](#)
[3 图像](#)

#### 概述

产品名称	Anti-Glycogen synthase 1/GYS1抗体[EP817Y]
描述	兔单克隆抗体[EP817Y] to Glycogen synthase 1/GYS1
宿主	Rabbit
经测试应用	<b>适用于:</b> WB <b>不适用于:</b> Flow Cyt (Intra) or ICC/IF
种属反应性	<b>与反应:</b> Human <b>预测可用于:</b> Mouse, Rat 
免疫原	Synthetic peptide within Human Glycogen synthase 1/GYS1 aa 700-800 (C terminal). The exact sequence is proprietary.
阳性对照	WB: HeLa whole cell lysate ( <a href="#">ab150035</a> ), HEK293 cell lysate.
常规说明	<p>This product is a recombinant monoclonal antibody, which offers several advantages including:</p> <ul style="list-style-type: none"> <li>- High batch-to-batch consistency and reproducibility</li> <li>- Improved sensitivity and specificity</li> <li>- Long-term security of supply</li> <li>- Animal-free production</li> </ul> <p>For more information <a href="#">see here</a>.</p> <p>Our RabMAb<sup>®</sup> technology is a patented hybridoma-based technology for making rabbit monoclonal antibodies. For details on our patents, please refer to <a href="#">RabMAb<sup>®</sup> patents</a>.</p>

#### 性能

形式	Liquid
存放说明	Shipped at 4°C. Store at +4°C short term (1-2 weeks). Upon delivery aliquot. Store at -20°C. Avoid freeze / thaw cycle.
存储溶液	pH: 7.20 Preservative: 0.01% Sodium azide Constituents: 50% Glycerol (glycerin, glycerine), 0.05% BSA, 49% PBS
纯度	Protein A purified
克隆	单克隆

克隆编号 EP817Y

同种型 IgG

应用

The Abpromise guarantee      **Abpromise™** 承诺保证使用ab40810于以下的经测试应用

“应用说明”部分 下显示的仅为推荐的起始稀释度;实际最佳的稀释度/浓度应由使用者检定。

应用	Ab评论	说明
WB	★★★★★ (3)	1/10000 - 1/50000. Detects a band of approximately 85 kDa (predicted molecular weight: 81 kDa).

应用说明      Is unsuitable for Flow Cyt (Intra) or ICC/IF.

靶标

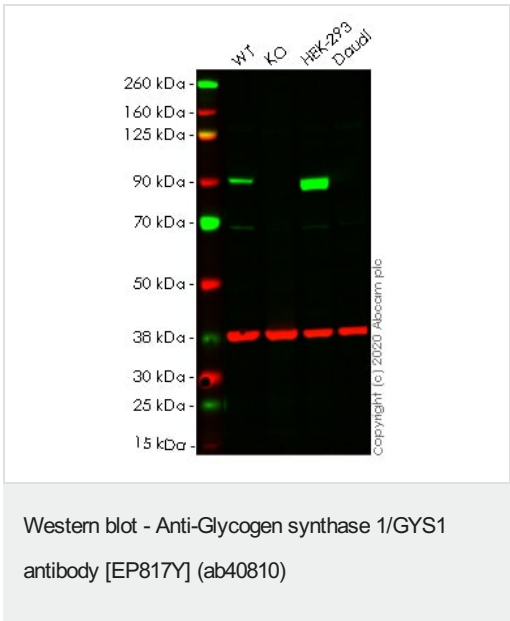
功能      Transfers the glycosyl residue from UDP-Glc to the non-reducing end of alpha-1,4-glucan.

通路      Glycan biosynthesis; glycogen biosynthesis.

疾病相关      Defects in GYS1 are the cause of muscle glycogen storage disease type 0 (GSD0b) [MIM:611556]; also known as muscle glycogen synthase deficiency. GSD0b is a metabolic disorder characterized by fasting hypoglycemia presenting in infancy or early childhood. The role of muscle glycogen is to provide critical energy during bursts of activity and sustained muscle work.

序列相似性      Belongs to the glycosyltransferase 3 family.

图片



**All lanes :** Anti-Glycogen synthase 1/GYS1 antibody [EP817Y] (ab40810) at 1/10000 dilution

- Lane 1 :** Wild-type HeLa lysate
- Lane 2 :** Glycogen synthase 1/GYS1 knockout HeLa lysate
- Lane 3 :** HEK-293 lysate
- Lane 4 :** Daudi lysate

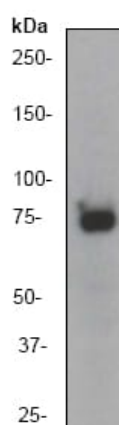
Lysates/proteins at 20 µg per lane.

Performed under reducing conditions.

**Predicted band size:** 81 kDa

**Lanes 1-4:** Merged signal (red and green). Green - ab40810 observed at 80 kDa. Red - loading control **ab8245** observed at 37 kDa.

ab40810 Recombinant Anti-Glycogen synthase 1/GYS1 antibody [EP817Y] was shown to specifically react with Glycogen synthase 1/GYS1 in wild-type HeLa cells. Loss of signal was observed when knockout cell line **ab265388** (knockout cell lysate **ab257462**) was used. Wild-type and Glycogen synthase 1/GYS1 knockout samples were subjected to SDS-PAGE. ab40810 and Anti-GAPDH antibody [6C5] - Loading Control (**ab8245**) were incubated overnight at 4°C at 1 in 10000 dilution and 1 in 20000 dilution respectively. Blots were developed with Goat anti-Rabbit IgG H&L (IRDye® 800CW) preadsorbed (**ab216773**) and Goat anti-Mouse IgG H&L (IRDye® 680RD) preadsorbed (**ab216776**) secondary antibodies at 1 in 20000 dilution for 1 hour at room temperature before imaging.



Western blot - Anti-Glycogen synthase 1/GYS1 antibody [EP817Y] (ab40810)

Anti-Glycogen synthase 1/GYS1 antibody [EP817Y] (ab40810) at 1/50000 dilution + HeLa cell lysate at 10 µg

**Predicted band size:** 81 kDa

**Observed band size:** 85 kDa

### Why choose a recombinant antibody?



**Research with confidence**  
Consistent and reproducible results



**Long-term and scalable supply**  
Recombinant technology



**Success from the first experiment**  
Confirmed specificity



**Ethical standards compliant**  
Animal-free production

Anti-Glycogen synthase 1/GYS1 antibody [EP817Y]  
(ab40810)

**Please note:** All products are "FOR RESEARCH USE ONLY. NOT FOR USE IN DIAGNOSTIC PROCEDURES"

### Our Abpromise to you: Quality guaranteed and expert technical support

---

- Replacement or refund for products not performing as stated on the datasheet
- Valid for 12 months from date of delivery
- Response to your inquiry within 24 hours
- We provide support in Chinese, English, French, German, Japanese and Spanish
- Extensive multi-media technical resources to help you
- We investigate all quality concerns to ensure our products perform to the highest standards

If the product does not perform as described on this datasheet, we will offer a refund or replacement. For full details of the Abpromise, please visit <https://www.abcam.cn/abpromise> or contact our technical team.

### Terms and conditions

---

- Guarantee only valid for products bought direct from Abcam or one of our authorized distributors