


Anti-Glutamate Transporter 1 antibody ab106289

★★★★☆ [2 Abreviews](#) [11 References](#) [1 图像](#)

概述

产品名称	Anti-Glutamate Transporter 1抗体
描述	兔多克隆抗体to Glutamate Transporter 1
宿主	Rabbit
经测试应用	适用于: WB
种属反应性	与反应: Mouse, Rat 预测可用于: Human 
免疫原	Synthetic peptide corresponding to Rat Glutamate Transporter 1 (C terminal). A 16 residue synthetic peptide derived from the C terminal domain of Rat glutamate transporter 1. Database link: P31596
常规说明	<p>The Life Science industry has been in the grips of a reproducibility crisis for a number of years. Abcam is leading the way in addressing this with our range of recombinant monoclonal antibodies and knockout edited cell lines for gold-standard validation. Please check that this product meets your needs before purchasing.</p> <p>If you have any questions, special requirements or concerns, please send us an inquiry and/or contact our Support team ahead of purchase. Recommended alternatives for this product can be found below, along with publications, customer reviews and Q&As</p>

性能

形式	Liquid
存放说明	Avoid freeze / thaw cycle.
存储溶液	Constituent: Whole serum
纯度	Whole antiserum
克隆	多克隆
同种型	IgG

应用

The Abpromise guarantee [Abpromise™](#)承诺保证使用ab106289于以下的经测试应用

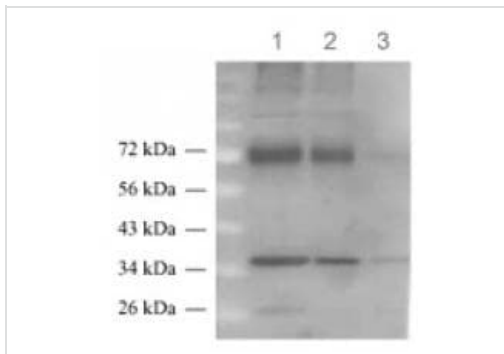
“应用说明”部分 下显示的仅为推荐的起始稀释度;实际最佳的稀释度/浓度应由使用者检定。

应用	Ab评论	说明
WB		1/200 - 1/5000. Predicted molecular weight: 62 kDa.

靶标

功能	Transports L-glutamate and also L- and D-aspartate. Essential for terminating the postsynaptic action of glutamate by rapidly removing released glutamate from the synaptic cleft. Acts as a symport by cotransporting sodium.
序列相似性	Belongs to the dicarboxylate/amino acid:cation symporter (DAACS) (TC 2.A.23) family. SLC1A2 subfamily.
翻译后修饰	Glycosylated. Palmitoylation at Cys-38 is not required for correct subcellular localization, but is important for glutamate uptake activity.
细胞定位	Membrane.

图片



Western blot - Anti-Glutamate Transporter 1 antibody (ab106289)

All lanes : Anti-Glutamate Transporter 1 antibody (ab106289) at 1/1000 dilution

Lane 1 : Protein extract from rat brain

Lane 2 : Protein extract from mouse brain

Predicted band size: 62 kDa

Lane 3 shows inhibition of the immunoreactivity of ab106289 with blocking peptide.

Glutamate Transporter 1 protein is detected at 35 kDa and 70 kDa as a dimer.

Please note: All products are "FOR RESEARCH USE ONLY. NOT FOR USE IN DIAGNOSTIC PROCEDURES"

Our Abpromise to you: Quality guaranteed and expert technical support

- Replacement or refund for products not performing as stated on the datasheet
- Valid for 12 months from date of delivery
- Response to your inquiry within 24 hours
- We provide support in Chinese, English, French, German, Japanese and Spanish
- Extensive multi-media technical resources to help you

- We investigate all quality concerns to ensure our products perform to the highest standards

If the product does not perform as described on this datasheet, we will offer a refund or replacement. For full details of the Abpromise, please visit <https://www.abcam.cn/abpromise> or contact our technical team.

Terms and conditions

- Guarantee only valid for products bought direct from Abcam or one of our authorized distributors