

# Anti-Glutamate Receptor 1 (AMPA subtype) (phospho S836) antibody ab119397

[1 References](#) [1 图像](#)

### 概述

产品名称	Anti-Glutamate Receptor 1 (AMPA subtype) (phospho S836)抗体
描述	兔多克隆抗体 to Glutamate Receptor 1 (AMPA subtype) (phospho S836)
宿主	Rabbit
经测试应用	适用于: WB
种属反应性	与反应: Mouse
免疫原	Synthetic peptide. This information is proprietary to Abcam and/or its suppliers.
阳性对照	Mouse Brain extracts
常规说明	<p>The Life Science industry has been in the grips of a reproducibility crisis for a number of years. Abcam is leading the way in addressing this with our range of recombinant monoclonal antibodies and knockout edited cell lines for gold-standard validation. Please check that this product meets your needs before purchasing.</p> <p>If you have any questions, special requirements or concerns, please send us an inquiry and/or contact our Support team ahead of purchase. Recommended alternatives for this product can be found below, along with publications, customer reviews and Q&amp;As</p>

### 性能

形式	Liquid
存放说明	Shipped at 4°C. Store at -20°C. Stable for 12 months at -20°C.
存储溶液	<p>pH: 7.40</p> <p>Preservative: 0.02% Sodium azide</p> <p>Constituents: 48% PBS, 50% Glycerol (glycerin, glycerine), 0.88% Sodium chloride</p> <p>(without Mg<sup>2+</sup> and Ca<sup>2+</sup>)</p>
纯度	Immunogen affinity purified
纯化说明	ab119397 was affinity-purified by affinity-chromatography using epitope-specific phosphopeptide. The antibody against non-phosphopeptide was removed by chromatography using non-phosphopeptide corresponding to the phosphorylation site.
克隆	多克隆

同种型IgG

应用

The Abpromise guarantee      **Abpromise™**承诺保证使用ab119397于以下的经测试应用

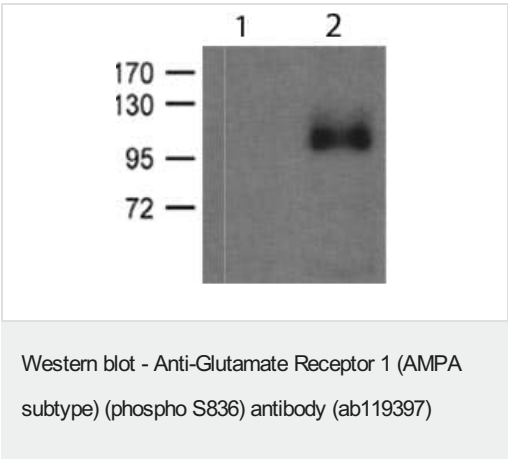
“应用说明”部分 下显示的仅为推荐的起始稀释度;实际最佳的稀释度/浓度应由使用者检定。

应用	Ab评论	说明
WB		1/500 - 1/1000. Detects a band of approximately 106 kDa (predicted molecular weight: 102 kDa).

靶标

功能	Ionotropic glutamate receptor. L-glutamate acts as an excitatory neurotransmitter at many synapses in the central nervous system. Binding of the excitatory neurotransmitter L-glutamate induces a conformation change, leading to the opening of the cation channel, and thereby converts the chemical signal to an electrical impulse. The receptor then desensitizes rapidly and enters a transient inactive state, characterized by the presence of bound agonist.
组织特异性	Widely expressed in brain.
序列相似性	Belongs to the glutamate-gated ion channel (TC 1.A.10.1) family. GRIA1 subfamily.
翻译后修饰	Palmitoylated. Depalmitoylated upon glutamate stimulation. Cys-603 palmitoylation leads to Golgi retention and decreased cell surface expression. In contrast, Cys-829 palmitoylation does not affect cell surface expression but regulates stimulation-dependent endocytosis.
细胞定位	Cell membrane. Endoplasmic reticulum membrane. Cell junction > synapse > postsynaptic cell membrane. Interaction with CACNG2 promotes cell surface expression.

图片



**All lanes :** Anti-Glutamate Receptor 1 (AMPA subtype) (phospho S836) antibody (ab119397) at 1/500 dilution

**Lane 1 :** Control

**Lane 2 :** Mouse Brain extract

**Predicted band size:** 102 kDa

**Observed band size:** 106 kDa

Please note: All products are "FOR RESEARCH USE ONLY. NOT FOR USE IN DIAGNOSTIC PROCEDURES"

### **Our Abpromise to you: Quality guaranteed and expert technical support**

---

- Replacement or refund for products not performing as stated on the datasheet
- Valid for 12 months from date of delivery
- Response to your inquiry within 24 hours
  
- We provide support in Chinese, English, French, German, Japanese and Spanish
- Extensive multi-media technical resources to help you
- We investigate all quality concerns to ensure our products perform to the highest standards

If the product does not perform as described on this datasheet, we will offer a refund or replacement. For full details of the Abpromise, please visit <https://www.abcam.cn/abpromise> or contact our technical team.

### **Terms and conditions**

---

- Guarantee only valid for products bought direct from Abcam or one of our authorized distributors