

# Anti-Glutamate Receptor 1 (AMPA subtype) (phospho S831) antibody [EPR1887] ab109464

**重组 RabMAb**

**23 References**   [5 图像](#)

### 概述

<b>产品名称</b>	Anti-Glutamate Receptor 1 (AMPA subtype) (phospho S831)抗体[EPR1887]
<b>描述</b>	兔单克隆抗体[EPR1887] to Glutamate Receptor 1 (AMPA subtype) (phospho S831)
<b>宿主</b>	Rabbit
<b>特异性</b>	ab109464 only detects Glutamate Receptor 1 phosphorylated at Serine 831.
<b>经测试应用</b>	<b>适用于:</b> WB, Dot blot <b>不适用于:</b> Flow Cyt, ICC/IF or IHC-P
<b>种属反应性</b>	<b>与反应:</b> Mouse, Rat, Human
<b>免疫原</b>	Synthetic peptide. This information is proprietary to Abcam and/or its suppliers.
<b>阳性对照</b>	Rat brain lysates
<b>常规说明</b>	This product is a recombinant monoclonal antibody, which offers several advantages including: <ul style="list-style-type: none"> <li>- High batch-to-batch consistency and reproducibility</li> <li>- Improved sensitivity and specificity</li> <li>- Long-term security of supply</li> <li>- Animal-free production</li> </ul> For more information <a href="#">see here</a> . Our RabMAb <sup>®</sup> technology is a patented hybridoma-based technology for making rabbit monoclonal antibodies. For details on our patents, please refer to <a href="#">RabMAb<sup>®</sup> patents</a> .

### 性能

<b>形式</b>	Liquid
<b>存放说明</b>	Shipped at 4°C. Store at -20°C. Stable for 12 months at -20°C.
<b>存储溶液</b>	pH: 7.20 Preservative: 0.05% Sodium azide Constituents: 0.1% BSA, 40% Glycerol (glycerin, glycerine), 9.85% Tris glycine, 50% Tissue culture supernatant
<b>纯度</b>	Protein A purified
<b>克隆</b>	单克隆

克隆编号    EPR1887  
同种型    IgG

## 应用

**The Abpromise guarantee**    **Abpromise™**承诺保证使用ab109464于以下的经测试应用

“应用说明”部分 下显示的仅为推荐的起始稀释度;实际最佳的稀释度/浓度应由使用者检定。

应用	Ab评论	说明
<b>WB</b>		1/1000 - 1/10000. Detects a band of approximately 106 kDa (predicted molecular weight: 102 kDa).
<b>Dot blot</b>		Use at an assay dependent concentration.

应用说明    Is unsuitable for Flow Cyt,ICC/IF or IHC-P.

## 靶标

**功能**    Ionotropic glutamate receptor. L-glutamate acts as an excitatory neurotransmitter at many synapses in the central nervous system. Binding of the excitatory neurotransmitter L-glutamate induces a conformation change, leading to the opening of the cation channel, and thereby converts the chemical signal to an electrical impulse. The receptor then desensitizes rapidly and enters a transient inactive state, characterized by the presence of bound agonist.

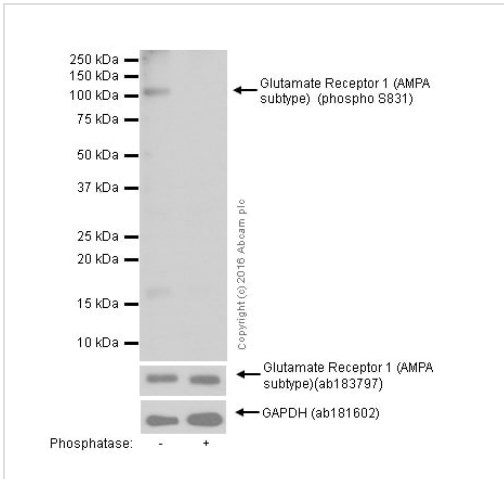
**组织特异性**    Widely expressed in brain.

**序列相似性**    Belongs to the glutamate-gated ion channel (TC 1.A.10.1) family. GRIA1 subfamily.

**翻译后修饰**    Palmitoylated. Depalmitoylated upon glutamate stimulation. Cys-603 palmitoylation leads to Golgi retention and decreased cell surface expression. In contrast, Cys-829 palmitoylation does not affect cell surface expression but regulates stimulation-dependent endocytosis.

**细胞定位**    Cell membrane. Endoplasmic reticulum membrane. Cell junction > synapse > postsynaptic cell membrane. Interaction with CACNG2 promotes cell surface expression.

## 图片



Western blot - Anti-Glutamate Receptor 1 (AMPA subtype) (phospho S831) antibody [EPR1887] (ab109464)

**All lanes :** Anti-Glutamate Receptor 1 (AMPA subtype) (phospho S831) antibody [EPR1887] (ab109464) at 1/1000 dilution

**Lane 1 :** Mouse hippocampus tissue lysate

**Lane 2 :** Mouse hippocampus tissue lysate, membrane incubated with phosphatase

Lysates/proteins at 15 µg per lane.

### Secondary

**All lanes :** Goat Anti-Rabbit IgG H&L (HRP) (**ab97051**) at 1/20000 dilution

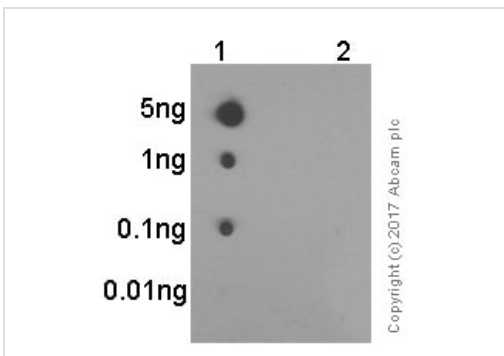
**Predicted band size:** 102 kDa

**Observed band size:** 106 kDa

**Exposure time:** 5 seconds

Blocking buffer 5% NFDm/TBST

Diluting buffer 5% NFDm/TBST

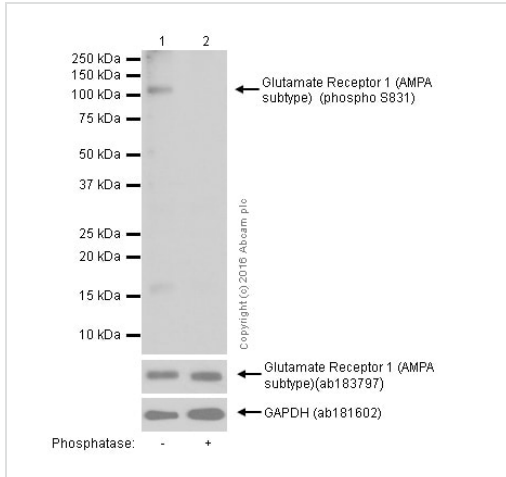


Dot Blot - Anti-Glutamate Receptor 1 (AMPA subtype) (phospho S831) antibody [EPR1887] (ab109464)

Dot blot analysis of Glutamate Receptor 1 (AMPA subtype) with ab109464 at 1/1000 exposed for 3 minutes. Goat Anti-Rabbit IgG, (H+L), Peroxidase conjugated (**ab97051**) (1/100,000) was used as the secondary antibody. Blocking buffer 5% NFDm/TBST. Diluting buffer 5% NFDm/TBST.

**Lane 1:** Glutamate Receptor 1 (AMPA subtype) (pS831) phospho peptide

**Lane 2:** Glutamate Receptor 1 (AMPA subtype) non-phospho peptide



Western blot - Anti-Glutamate Receptor 1 (AMPA subtype) (phospho S831) antibody [EPR1887] (ab109464)

**All lanes :** Anti-Glutamate Receptor 1 (AMPA subtype) (phospho S831) antibody [EPR1887] (ab109464) at 1/1000 dilution

**Lane 1 :** Human cerebellum whole cell lysates

**Lane 2 :** Human cerebellum whole cell lysates, the membrane was incubated with phosphatase.

Lysates/proteins at 15 µg per lane.

### Secondary

**All lanes :** Goat Anti-Rabbit IgG H&L (HRP) (**ab97051**) at 1/20000 dilution

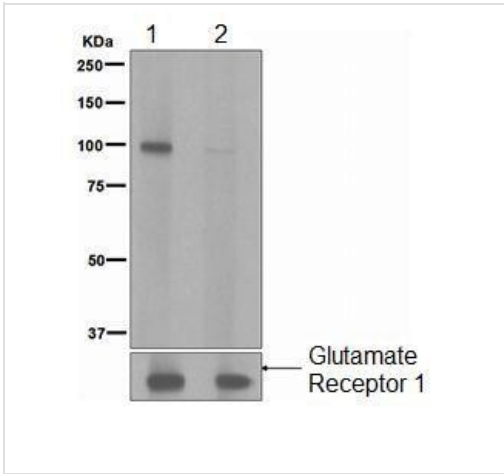
**Predicted band size:** 102 kDa

**Observed band size:** 106 kDa

**Exposure time:** 10 seconds

Blocking buffer 5% NFDm/TBST

Diluting buffer 5% NFDm/TBST



Western blot - Anti-Glutamate Receptor 1 (AMPA subtype) (phospho S831) antibody [EPR1887] (ab109464)

**All lanes :** Anti-Glutamate Receptor 1 (AMPA subtype) (phospho S831) antibody [EPR1887] (ab109464) at 1/1000 dilution

**Lane 1 :** Rat brain lysates, untreated

**Lane 2 :** Rat brain lysates treated with Lambda Phosphatase

Lysates/proteins at 10 µg per lane.

**Secondary**





**All lanes :** HRP-labelled goat anti-rabbit at 1/2000 dilution

**Predicted band size:** 102 kDa

**Observed band size:** 106 kDa

The lower panel shows Glutamate Receptor 1 detected with an alternative anti-Glutamate Receptor 1 antibody which is not dependent upon antigen phosphorylation.

Why choose a recombinant antibody?

 <b>Research with confidence</b> Consistent and reproducible results	 <b>Long-term and scalable supply</b> Recombinant technology
 <b>Success from the first experiment</b> Confirmed specificity	 <b>Ethical standards compliant</b> Animal-free production

Anti-Glutamate Receptor 1 (AMPA subtype) (phospho S831) antibody [EPR1887] (ab109464)

**Please note:** All products are "FOR RESEARCH USE ONLY. NOT FOR USE IN DIAGNOSTIC PROCEDURES"

**Our Abpromise to you: Quality guaranteed and expert technical support**

- Replacement or refund for products not performing as stated on the datasheet
- Valid for 12 months from date of delivery
- Response to your inquiry within 24 hours
- We provide support in Chinese, English, French, German, Japanese and Spanish

- Extensive multi-media technical resources to help you
- We investigate all quality concerns to ensure our products perform to the highest standards

If the product does not perform as described on this datasheet, we will offer a refund or replacement. For full details of the Abpromise, please visit <https://www.abcam.cn/abpromise> or contact our technical team.

### **Terms and conditions**

---

- Guarantee only valid for products bought direct from Abcam or one of our authorized distributors