


Anti-GLUT5 antibody - N-terminal ab190555

1 图像

概述

产品名称	Anti-GLUT5抗体- N-terminal
描述	兔多克隆抗体to GLUT5 - N-terminal
宿主	Rabbit
经测试应用	适用于: WB
种属反应性	与反应: Human 预测可用于: Orangutan 
免疫原	Synthetic peptide within Human GLUT5 aa 1-100 (N terminal). The exact immunogen sequence used to generate this antibody is proprietary information. If additional detail on the immunogen is needed to determine the suitability of the antibody for your needs, please contact our Scientific Support team to discuss your requirements. Database link: P22732 Run BLAST with Run BLAST with
阳性对照	K562 cell extract.
常规说明	The Life Science industry has been in the grips of a reproducibility crisis for a number of years. Abcam is leading the way in addressing this with our range of recombinant monoclonal antibodies and knockout edited cell lines for gold-standard validation. Please check that this product meets your needs before purchasing. If you have any questions, special requirements or concerns, please send us an inquiry and/or contact our Support team ahead of purchase. Recommended alternatives for this product can be found below, along with publications, customer reviews and Q&As

性能

形式	Liquid
存放说明	Shipped at 4°C. Store at +4°C short term (1-2 weeks). Upon delivery aliquot. Store at -20°C long term. Avoid freeze / thaw cycle.
存储溶液	pH: 7.40 Preservative: 0.02% Sodium azide Constituents: 49% PBS, 50% Glycerol (glycerin, glycerine), 0.87% Sodium chloride PBS without Mg ²⁺ and Ca ²⁺ .

纯度	Immunogen affinity purified
纯化说明	ab190555 was affinity-purified from rabbit antiserum by affinity-chromatography using epitope-specific peptide.
克隆	多克隆
同种型	IgG

应用

The Abpromise guarantee **Abpromise™** 承诺保证使用 ab190555 于以下的经测试应用

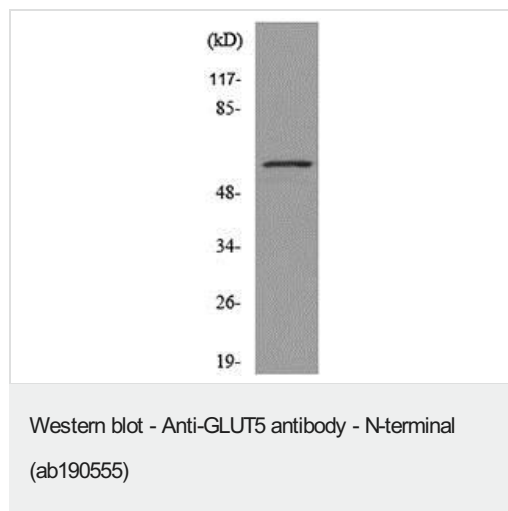
“应用说明”部分 下显示的仅为推荐的起始稀释度;实际最佳的稀释度/浓度应由使用者检定。

应用	Ab评论	说明
WB		1/500 - 1/1000. Predicted molecular weight: 55 kDa.

靶标

功能	Cytochalasin B-sensitive carrier. Seems to function primarily as a fructose transporter.
组织特异性	Expressed in small intestine, and at much lower levels in kidney, skeletal muscle, and adipose tissue.
序列相似性	Belongs to the major facilitator superfamily. Sugar transporter (TC 2.A.1.1) family. Glucose transporter subfamily.
细胞定位	Membrane.

图片



Anti-GLUT5 antibody - N-terminal (ab190555) at 1/500 dilution + K562 cell extract at 30 µg

Predicted band size: 55 kDa

Please note: All products are "FOR RESEARCH USE ONLY. NOT FOR USE IN DIAGNOSTIC PROCEDURES"

Our Abpromise to you: Quality guaranteed and expert technical support

- Replacement or refund for products not performing as stated on the datasheet
- Valid for 12 months from date of delivery
- Response to your inquiry within 24 hours

- We provide support in Chinese, English, French, German, Japanese and Spanish
- Extensive multi-media technical resources to help you
- We investigate all quality concerns to ensure our products perform to the highest standards

If the product does not perform as described on this datasheet, we will offer a refund or replacement. For full details of the Abpromise, please visit <https://www.abcam.cn/abpromise> or contact our technical team.

Terms and conditions

- Guarantee only valid for products bought direct from Abcam or one of our authorized distributors