

Anti-Glucose Transporter GLUT4 antibody [1F8] ab35826

12 References **1 图像**

概述

产品名称	Anti-Glucose Transporter GLUT4抗体[1F8]
描述	小鼠单克隆抗体[1F8] to Glucose Transporter GLUT4
宿主	Mouse
经测试应用	适用于: WB
种属反应性	与反应: Mouse
免疫原	Tissue, cells or virus corresponding to Rat Glucose Transporter GLUT4. Partially purified vesicles containing insulin-responsive glucose transporter 4.
表位	This antibody has been shown to recognise an epitope in the cytoplasmic portion of the molecule.
常规说明	<p>The Life Science industry has been in the grips of a reproducibility crisis for a number of years. Abcam is leading the way in addressing this with our range of recombinant monoclonal antibodies and knockout edited cell lines for gold-standard validation. Please check that this product meets your needs before purchasing.</p> <p>If you have any questions, special requirements or concerns, please send us an inquiry and/or contact our Support team ahead of purchase. Recommended alternatives for this product can be found below, along with publications, customer reviews and Q&As</p>

性能

形式	Liquid
存放说明	Shipped at 4°C. Upon delivery aliquot and store at -20°C. Avoid freeze / thaw cycles.
存储溶液	<p>pH: 7.20</p> <p>Preservative: 0.09% Sodium azide</p> <p>Constituent: PBS</p>
纯度	Protein G purified
克隆	单克隆
克隆编号	1F8
同种型	IgG1

应用

The Abpromise guarantee **Abpromise™**承诺保证使用ab35826于以下的经测试应用

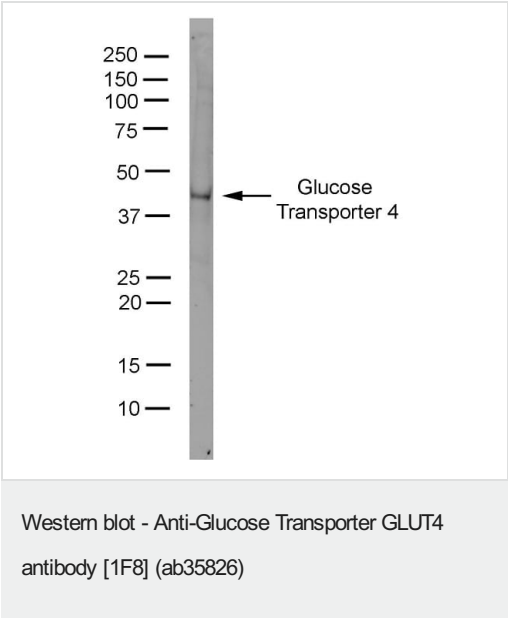
“应用说明”部分 下显示的仅为推荐的起始稀释度;实际最佳的稀释度/浓度应由使用者检定。

应用	Ab评论	说明
WB		Use at an assay dependent concentration. Predicted molecular weight: 56 kDa. 5 µg/ml of antibody will detect Glucose Transporter protein contained in 50-200 µg of solubilised membrane.

靶标

功能	Insulin-regulated facilitative glucose transporter.
组织特异性	Skeletal and cardiac muscles; brown and white fat.
疾病相关	Diabetes mellitus, non-insulin-dependent
序列相似性	Belongs to the major facilitator superfamily. Sugar transporter (TC 2.A.1.1) family. Glucose transporter subfamily.
翻译后修饰	Sumoylated.
细胞定位	Cell membrane. Endomembrane system. Cytoplasm, perinuclear region. Localizes primarily to the perinuclear region, undergoing continued recycling to the plasma membrane where it is rapidly reinternalized. The dileucine internalization motif is critical for intracellular sequestration.

图片



3T3-L1 lysate probed with Mouse anti Rat GLUT4 (ab35826) followed by Goat anti Mouse IgG:Dylight®800. Imaged using the LiCor Odyssey®

Please note: All products are "FOR RESEARCH USE ONLY. NOT FOR USE IN DIAGNOSTIC PROCEDURES"

Our Abpromise to you: Quality guaranteed and expert technical support

- Replacement or refund for products not performing as stated on the datasheet
- Valid for 12 months from date of delivery
- Response to your inquiry within 24 hours
- We provide support in Chinese, English, French, German, Japanese and Spanish
- Extensive multi-media technical resources to help you
- We investigate all quality concerns to ensure our products perform to the highest standards

If the product does not perform as described on this datasheet, we will offer a refund or replacement. For full details of the Abpromise, please visit <https://www.abcam.cn/abpromise> or contact our technical team.

Terms and conditions

- Guarantee only valid for products bought direct from Abcam or one of our authorized distributors