

Anti-Glucose Transporter GLUT3 antibody ab41525

★★★★★ [9 Abreviews](#) [57 References](#) [2 图像](#)

概述

产品名称	Anti-Glucose Transporter GLUT3抗体
描述	兔多克隆抗体to Glucose Transporter GLUT3
宿主	Rabbit
经测试应用	适用于: WB, IHC-P
种属反应性	与反应: Human
免疫原	Synthetic peptide within Mouse Glucose Transporter GLUT3 (C terminal). The exact immunogen sequence used to generate this antibody is proprietary information. If additional detail on the immunogen is needed to determine the suitability of the antibody for your needs, please contact our Scientific Support team to discuss your requirements. Database link: P32037

常规说明

The Life Science industry has been in the grips of a reproducibility crisis for a number of years. Abcam is leading the way in addressing this with our range of recombinant monoclonal antibodies and knockout edited cell lines for gold-standard validation. Please check that this product meets your needs before purchasing.

If you have any questions, special requirements or concerns, please send us an inquiry and/or contact our Support team ahead of purchase. Recommended alternatives for this product can be found below, along with publications, customer reviews and Q&As

性能

形式	Liquid
存放说明	Shipped at 4°C. Upon delivery aliquot and store at -20°C or -80°C. Avoid repeated freeze / thaw cycles.
存储溶液	Preservative: 0.02% Sodium azide Antibody stabilization buffer.
纯度	Immunogen affinity purified
纯化说明	Antigen-sepharose affinity column.
克隆	多克隆
同种型	IgG

应用

The Abpromise guarantee **Abpromise™**承诺保证使用ab41525于以下的经测试应用

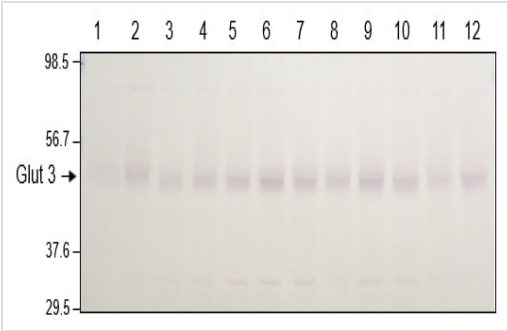
“应用说明”部分 下显示的仅为推荐的起始稀释度;实际最佳的稀释度/浓度应由使用者检定。

应用	Ab评论	说明
WB	★★★★★ (5)	1/8000. Detects a band of approximately 45-47 kDa. Detects a band of approximately 45-47 kDa using 10ug hippocampal plasma membranes as antigen. The samples MUST NOT be boiled before running the gel as highly hydrophobic membrane proteins, like glucose transporters, aggregate severely at high temperatures due to the hydrophobic effect, which increases as a direct function of temperature. If the samples are boiled, much of
IHC-P		Use a concentration of 4 µg/ml.

靶标

功能	Facilitative glucose transporter. Probably a neuronal glucose transporter.
组织特异性	Highly expressed in brain. Expressed in many tissues.
序列相似性	Belongs to the major facilitator superfamily. Sugar transporter (TC 2.A.1.1) family. Glucose transporter subfamily.
细胞定位	Membrane.

图片



Western blot - Anti-Glucose Transporter GLUT3 antibody (ab41525)

All lanes : Anti-Glucose Transporter GLUT3 antibody (ab41525) at 1/2000 dilution

Lanes 1 & 4 & 7 & 10 : Sal 3 month cortical extract

Lanes 2 & 5 & 8 & 11 : Glu 3 month cortical extract

Lanes 3 & 9 & 12 : CB 3 month cortical extract

Lane 6 : GB 3 month cortical extract

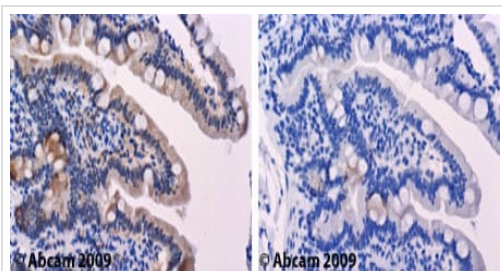
Lysates/proteins at 10 µg per lane.

Secondary

All lanes : Alkaline phosphatase-conjugated goat anti-rabbit IgG at 1/5000 dilution

10% SDS-PAGE gel.

Incubated with the primary antibody for 2 hours at room temperature followed by 3x10 minutes washes in TBST.



Immunohistochemistry (Formalin/PFA-fixed paraffin-embedded sections) - Anti-Glucose Transporter GLUT3 antibody (ab41525)

ab41525 staining GLUT3 in human duodenum.

Left panel: with primary antibody at 4 ug/ml. Right panel: isotype control.

Sections were stained using an automated system (DAKO Autostainer Plus), at room temperature: sections were rehydrated and antigen retrieved with the Dako 3 in 1 AR buffers EDTA pH 9.0. Slides were peroxidase blocked in 3% H₂O₂ in methanol for 10 mins. They were then blocked with Dako Protein block for 10 minutes (containing casein 0.25% in PBS) then incubated with primary antibody for 20 min and detected with Dako envision flex amplification kit for 30 minutes. Colorimetric detection was completed with Diaminobenzidine for 5 minutes. Slides were counterstained with Haematoxylin and coverslipped under DePeX. Please note that for manual staining we recommend to optimize the primary antibody concentration and incubation time (overnight incubation), and amplification may be required.

Please note: All products are "FOR RESEARCH USE ONLY. NOT FOR USE IN DIAGNOSTIC PROCEDURES"

Our Abpromise to you: Quality guaranteed and expert technical support

- Replacement or refund for products not performing as stated on the datasheet
- Valid for 12 months from date of delivery
- Response to your inquiry within 24 hours
- We provide support in Chinese, English, French, German, Japanese and Spanish
- Extensive multi-media technical resources to help you
- We investigate all quality concerns to ensure our products perform to the highest standards

If the product does not perform as described on this datasheet, we will offer a refund or replacement. For full details of the Abpromise, please visit <https://www.abcam.cn/abpromise> or contact our technical team.

Terms and conditions

- Guarantee only valid for products bought direct from Abcam or one of our authorized distributors