

Anti-Glucose Transporter GLUT2 antibody [EPR16550] ab192599

重组 RabMAb

★★★★★ **1 Abreviews** **4 References** **2 图像**

概述

产品名称	Anti-Glucose Transporter GLUT2抗体[EPR16550]
描述	兔单克隆抗体[EPR16550] to Glucose Transporter GLUT2
宿主	Rabbit
经测试应用	适用于: WB
种属反应性	与反应: Human
免疫原	Recombinant fragment. This information is proprietary to Abcam and/or its suppliers.
阳性对照	Human fetal liver, fetal kidney and pancreas lysates; HepG2 whole cell lysate (ab7900).
常规说明	<p>This product is a recombinant monoclonal antibody, which offers several advantages including:</p> <ul style="list-style-type: none"> - High batch-to-batch consistency and reproducibility - Improved sensitivity and specificity - Long-term security of supply - Animal-free production <p>For more information see here.</p> <p>Our RabMAb[®] technology is a patented hybridoma-based technology for making rabbit monoclonal antibodies. For details on our patents, please refer to RabMAb[®] patents.</p>

性能

形式	Liquid
存放说明	Shipped at 4°C. Store at +4°C short term (1-2 weeks). Upon delivery aliquot. Store at -20°C long term. Avoid freeze / thaw cycle.
存储溶液	<p>pH: 7.2</p> <p>Preservative: 0.01% Sodium azide</p> <p>Constituents: PBS, 40% Glycerol (glycerin, glycerine), 0.05% BSA</p>
纯度	Protein A purified
克隆	单克隆
克隆编号	EPR16550
同种型	IgG

应用

The Abpromise guarantee **Abpromise™** 承诺保证使用 ab192599 于以下的经测试应用

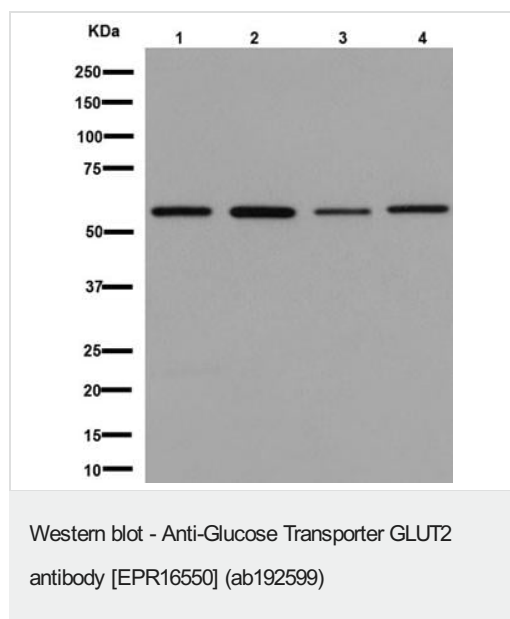
“应用说明”部分 下显示的仅为推荐的起始稀释度;实际最佳的稀释度/浓度应由使用者检定。

应用	Ab评论	说明
WB	★★★★★ (1)	1/1000 - 1/10000. Detects a band of approximately 57 kDa (predicted molecular weight: 57 kDa).

靶标

功能	Facilitative glucose transporter. This isoform likely mediates the bidirectional transfer of glucose across the plasma membrane of hepatocytes and is responsible for uptake of glucose by the beta cells; may comprise part of the glucose-sensing mechanism of the beta cell. May also participate with the Na(+)/glucose cotransporter in the transcellular transport of glucose in the small intestine and kidney.
组织特异性	Liver, insulin-producing beta cell, small intestine and kidney.
疾病相关	Fanconi-Bickel syndrome
序列相似性	Belongs to the major facilitator superfamily. Sugar transporter (TC 2.A.1.1) family. Glucose transporter subfamily.
翻译后修饰	N-glycosylated; required for stability and retention at the cell surface of pancreatic beta cells.
细胞定位	Membrane.

图片



All lanes : Anti-Glucose Transporter GLUT2 antibody [EPR16550] (ab192599) at 1/10000 dilution

Lane 1 : Human fetal liver lysate

Lane 2 : Human pancreas lysate

Lane 3 : Human fetal kidney lysate

Lane 4 : HepG2 cell lysate

Lysates/proteins at 20 µg per lane.

Secondary

All lanes : Goat anti-rabbit IgG, (H+L), peroxidase conjugated at 1/1000 dilution

Developed using the ECL technique.

Predicted band size: 57 kDa

Observed band size: 57 kDa

Why choose a recombinant antibody?

Research with confidence
Consistent and reproducible results

Long-term and scalable supply
Recombinant technology

Success from the first experiment
Confirmed specificity

Ethical standards compliant
Animal-free production

Anti-Glucose Transporter GLUT2 antibody
[EPR16550] (ab192599)

Please note: All products are "FOR RESEARCH USE ONLY. NOT FOR USE IN DIAGNOSTIC PROCEDURES"

Our Abpromise to you: Quality guaranteed and expert technical support

- Replacement or refund for products not performing as stated on the datasheet
- Valid for 12 months from date of delivery
- Response to your inquiry within 24 hours
- We provide support in Chinese, English, French, German, Japanese and Spanish
- Extensive multi-media technical resources to help you
- We investigate all quality concerns to ensure our products perform to the highest standards

If the product does not perform as described on this datasheet, we will offer a refund or replacement. For full details of the Abpromise, please visit <https://www.abcam.cn/abpromise> or contact our technical team.

Terms and conditions

- Guarantee only valid for products bought direct from Abcam or one of our authorized distributors