

Anti-Glucose Transporter GLUT2 antibody [5D1] ab85715

★★★★★ [4 Abreviews](#) [9 References](#) [3 图像](#)

概述

产品名称	Anti-Glucose Transporter GLUT2抗体[5D1]
描述	小鼠单克隆抗体[5D1] to Glucose Transporter GLUT2
宿主	Mouse
特异性	ab85715 recognizes Glucose Transporter GLUT2 expression on hGlut2-transfected NS0 cells but not on control transfectants. Detects Glut2 on the surface of the Human intestinal cell line Caco2 in flow cytometry and on fixed cells in immunocytochemistry tests. Based on flow cytometric tests on transfected cells, this antibody has no cross-reactivity with hGlut1 or hGlut3.
经测试应用	适用于: IHC-P, Flow Cyt, WB
种属反应性	与反应: Human
免疫原	Tissue, cells or virus corresponding to Human Glucose Transporter GLUT2. Recombinant protein corresponding to Met1-Val524 from human GLUT 2 expressed in NS0 cells.
阳性对照	Liver tissue. Flow Cytometry: HepG2 cells
常规说明	<p>The Life Science industry has been in the grips of a reproducibility crisis for a number of years. Abcam is leading the way in addressing this with our range of recombinant monoclonal antibodies and knockout edited cell lines for gold-standard validation. Please check that this product meets your needs before purchasing.</p> <p>If you have any questions, special requirements or concerns, please send us an inquiry and/or contact our Support team ahead of purchase. Recommended alternatives for this product can be found below, along with publications, customer reviews and Q&As</p>

性能

形式	Liquid
存放说明	Shipped at 4°C. Upon delivery aliquot and store at -20°C. Avoid repeated freeze / thaw cycles.
存储溶液	pH: 7.40 Constituents: PBS, 5% Trehalose
纯度	Protein G purified
克隆	单克隆
克隆编号	5D1
同种型	IgG2a

应用

The Abpromise guarantee **Abpromise™**承诺保证使用ab85715于以下的经测试应用

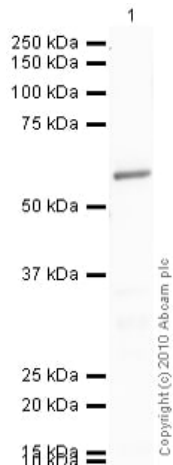
“应用说明”部分 下显示的仅为推荐的起始稀释度;实际最佳的稀释度/浓度应由使用者检定。

应用	Ab评论	说明
IHC-P	★★★★★ (1)	Use a concentration of 10 µg/ml.
Flow Cyt		Use 0.5µg for 10 ⁶ cells. ab170191 - Mouse monoclonal IgG2a, is suitable for use as an isotype control with this antibody.
WB	★★★★★ (2)	Use a concentration of 1 µg/ml. Detects a band of approximately 57 kDa (predicted molecular weight: 57 kDa).

靶标

功能	Facilitative glucose transporter. This isoform likely mediates the bidirectional transfer of glucose across the plasma membrane of hepatocytes and is responsible for uptake of glucose by the beta cells; may comprise part of the glucose-sensing mechanism of the beta cell. May also participate with the Na(+)/glucose cotransporter in the transcellular transport of glucose in the small intestine and kidney.
组织特异性	Liver, insulin-producing beta cell, small intestine and kidney.
疾病相关	Fanconi-Bickel syndrome
序列相似性	Belongs to the major facilitator superfamily. Sugar transporter (TC 2.A.1.1) family. Glucose transporter subfamily.
翻译后修饰	N-glycosylated; required for stability and retention at the cell surface of pancreatic beta cells.
细胞定位	Membrane.

图片



Western blot - Anti-Glucose Transporter GLUT2 antibody [5D1] (ab85715)

Anti-Glucose Transporter GLUT2 antibody [5D1] (ab85715) at 1 $\mu\text{g/ml}$ + Human pancreas tissue lysate - total protein (**ab29816**) at 10 μg

Secondary

Goat Anti-Mouse IgG H&L (HRP) preadsorbed (**ab97040**) at 1/5000 dilution

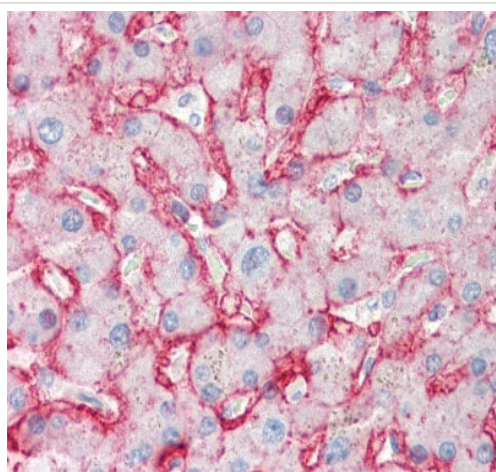
Developed using the ECL technique.

Performed under reducing conditions.

Predicted band size: 57 kDa

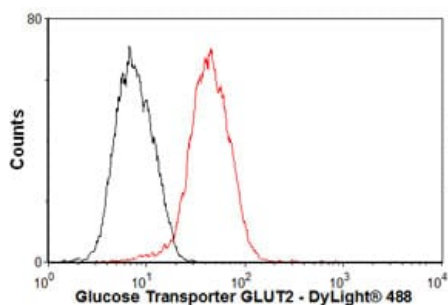
Observed band size: 57 kDa

Exposure time: 8 minutes



Immunohistochemistry (Formalin/PFA-fixed paraffin-embedded sections) - Anti-Glucose Transporter GLUT2 antibody [5D1] (ab85715)

ab85715, at 10 $\mu\text{g/ml}$, staining Glucose Transporter GLUT2 in formalin-fixed, paraffin-embedded human Liver tissue by Immunohistochemistry.



Flow Cytometry - Anti-Glucose Transporter GLUT2 antibody [5D1] (ab85715)

Overlay histogram showing HepG2 cells stained with ab85715 (red line). The cells were fixed with 4% paraformaldehyde (10 min) and then permeabilized with 0.1% PBS-Tween for 20 min. The cells were then incubated in 1x PBS / 10% normal goat serum / 0.3M glycine to block non-specific protein-protein interactions followed by the antibody (ab85715, 0.5 $\mu\text{g}/1 \times 10^6$ cells) for 30 min at 22°C. The secondary antibody used was DyLight® 488 goat anti-mouse IgG (H+L) (**ab96879**) at 1/500 dilution for 30 min at 22°C. Isotype control antibody (black line) was mouse IgG2a [ICIGG2A] (**ab91361**, 1 $\mu\text{g}/1 \times 10^6$ cells) used under the same conditions.

Acquisition of >5,000 events was performed. This antibody gave a positive signal in HepG2 cells fixed with 80% methanol (5 min)/permeabilized with 0.1% PBS-Tween for 20 min used under the same conditions.

Please note: All products are "FOR RESEARCH USE ONLY. NOT FOR USE IN DIAGNOSTIC PROCEDURES"

Our Abpromise to you: Quality guaranteed and expert technical support

- Replacement or refund for products not performing as stated on the datasheet
- Valid for 12 months from date of delivery
- Response to your inquiry within 24 hours
- We provide support in Chinese, English, French, German, Japanese and Spanish
- Extensive multi-media technical resources to help you
- We investigate all quality concerns to ensure our products perform to the highest standards

If the product does not perform as described on this datasheet, we will offer a refund or replacement. For full details of the Abpromise, please visit <https://www.abcam.cn/abpromise> or contact our technical team.

Terms and conditions

- Guarantee only valid for products bought direct from Abcam or one of our authorized distributors