


Anti-Glucose 6 Phosphate Dehydrogenase antibody [EPR6291] ab124738

 **RabMAb**

1 References **3 图像**

概述

产品名称	Anti-Glucose 6 Phosphate Dehydrogenase抗体[EPR6291]
描述	兔单克隆抗体[EPR6291] to Glucose 6 Phosphate Dehydrogenase
宿主	Rabbit
经测试应用	适用于: WB, Flow Cyt (Intra) 不适用于: ICC/IF, IHC-P or IP
种属反应性	与反应: Human 预测可用于: Mouse 
免疫原	Synthetic peptide within Human Glucose 6 Phosphate Dehydrogenase aa 100-200. The exact sequence is proprietary.
阳性对照	293T, MOLT4, HUVEC and HeLa whole cell lysate (ab150035); Permeablized HeLa cells.
常规说明	<p>This product is a recombinant monoclonal antibody, which offers several advantages including:</p> <ul style="list-style-type: none"> - High batch-to-batch consistency and reproducibility - Improved sensitivity and specificity - Long-term security of supply - Animal-free production <p>For more information see here.</p> <p>Our RabMAb[®] technology is a patented hybridoma-based technology for making rabbit monoclonal antibodies. For details on our patents, please refer to RabMAb[®] patents.</p> <p>Rat: We have preliminary internal testing data to indicate this antibody may not react with this species. Please contact us for more information.</p>

性能

形式	Liquid
存放说明	Shipped at 4°C. Store at -20°C. Stable for 12 months at -20°C.
存储溶液	pH: 7.20 Preservative: 0.05% Sodium azide Constituents: 40% Glycerol (glycerin, glycerine), 9.85% Tris glycine, 50% Tissue culture

	supernatant
纯度	Protein A purified
克隆	单克隆
克隆编号	EPR6291
同种型	IgG

The Abpromise guarantee

“应用说明”部分下显示的仅为推荐的起始稀释度;实际最佳的稀释度/浓度应由使用者检定。

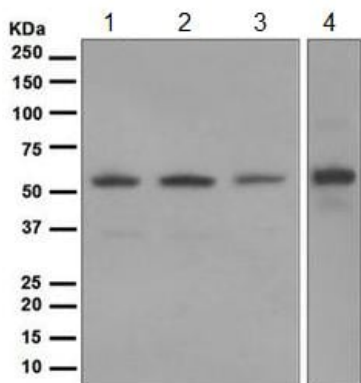
应用说明 Is unsuitable for ICC/IF, IHC-P or IP.

功能	Catalyzes the rate-limiting step of the oxidative pentose-phosphate pathway, which represents a route for the dissimilation of carbohydrates besides glycolysis. The main function of this enzyme is to provide reducing power (NADPH) and pentose phosphates for fatty acid and nucleic acid synthesis.
----	--

通路 Carbohydrate degradation; pentose phosphate pathway; D-ribulose 5-phosphate from D-glucose 6-phosphate (oxidative stage): step 1/3.

序列相似性 Belongs to the glucose-6-phosphate dehydrogenase family.

图片



Western blot - Anti-Glucose 6 Phosphate Dehydrogenase antibody [EPR6291] (ab124738)

All lanes : Anti-Glucose 6 Phosphate Dehydrogenase antibody [EPR6291] (ab124738) at 1/10000 dilution

Lane 1 : 293T cell lysate

Lane 2 : MOLT4 cell lysate

Lane 3 : HUVEC cell lysate

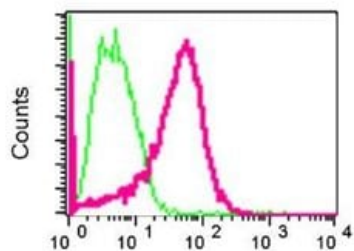
Lane 4 : HeLa cell lysate

Lysates/proteins at 10 µg per lane.

Secondary

All lanes : Goat anti-Rabbit HRP at 1/2000 dilution

Predicted band size: 59 kDa



Flow Cytometry (Intracellular) - Anti-Glucose 6 Phosphate Dehydrogenase antibody [EPR6291] (ab124738)

ab124738 at 1/10 dilution staining Glucose 6 Phosphate Dehydrogenase in permeabilized HeLa cells (red) or a rabbit IgG (negative) (green).

Why choose a recombinant antibody?



Research with confidence
Consistent and reproducible results



Long-term and scalable supply
Recombinant technology



Success from the first experiment
Confirmed specificity



Ethical standards compliant
Animal-free production

Anti-Glucose 6 Phosphate Dehydrogenase antibody
[EPR6291] (ab124738)

Please note: All products are "FOR RESEARCH USE ONLY. NOT FOR USE IN DIAGNOSTIC PROCEDURES"

Our Abpromise to you: Quality guaranteed and expert technical support

- Replacement or refund for products not performing as stated on the datasheet
- Valid for 12 months from date of delivery
- Response to your inquiry within 24 hours
- We provide support in Chinese, English, French, German, Japanese and Spanish
- Extensive multi-media technical resources to help you
- We investigate all quality concerns to ensure our products perform to the highest standards

If the product does not perform as described on this datasheet, we will offer a refund or replacement. For full details of the Abpromise, please visit <https://www.abcam.cn/abpromise> or contact our technical team.

Terms and conditions

- Guarantee only valid for products bought direct from Abcam or one of our authorized distributors