


Anti-Glucose 6 Phosphate Dehydrogenase antibody ab226964

4 图像

概述

产品名称	Anti-Glucose 6 Phosphate Dehydrogenase抗体
描述	兔多克隆抗体to Glucose 6 Phosphate Dehydrogenase
宿主	Rabbit
经测试应用	适用于: WB, IHC-P
种属反应性	与反应: Mouse, Rat, Human 预测可用于: Sheep, Rabbit, Cow, Rhesus monkey 
免疫原	Recombinant fragment within Human Glucose 6 Phosphate Dehydrogenase (internal sequence). The exact sequence is proprietary. Database link: P11413
阳性对照	WB: Neuro2a, PC-12, Rat2, HeLa S3, C8D30, NIH/3T3, RAW 264.7 and C1C12 whole cell extracts. IHC-P: U87 xenograft tissue.
常规说明	<p>The Life Science industry has been in the grips of a reproducibility crisis for a number of years. Abcam is leading the way in addressing this with our range of recombinant monoclonal antibodies and knockout edited cell lines for gold-standard validation. Please check that this product meets your needs before purchasing.</p> <p>If you have any questions, special requirements or concerns, please send us an inquiry and/or contact our Support team ahead of purchase. Recommended alternatives for this product can be found below, along with publications, customer reviews and Q&As</p>

性能

形式	Liquid
存放说明	Shipped at 4°C. Store at +4°C short term (1-2 weeks). Upon delivery aliquot. Store at -20°C long term. Avoid freeze / thaw cycle.
存储溶液	pH: 7.00 Preservative: 0.01% Thimerosal (merthiolate) Constituents: 1.21% Tris, 0.75% Glycine, 10% Glycerol (glycerin, glycerine)
纯度	Immunogen affinity purified
克隆	多克隆
同种型	IgG

应用

The Abpromise guarantee

Abpromise™承诺保证使用ab226964于以下的经测试应用

“应用说明”部分 下显示的仅为推荐的起始稀释度;实际最佳的稀释度/浓度应由使用者检定。

应用	Ab评论	说明
WB		1/500 - 1/3000. Predicted molecular weight: 59 kDa.
IHC-P		1/100 - 1/1000.

靶标

功能

Catalyzes the rate-limiting step of the oxidative pentose-phosphate pathway, which represents a route for the dissimilation of carbohydrates besides glycolysis. The main function of this enzyme is to provide reducing power (NADPH) and pentose phosphates for fatty acid and nucleic acid synthesis.

组织特异性

Isoform Long is found in lymphoblasts, granulocytes and sperm.

通路

Carbohydrate degradation; pentose phosphate pathway; D-ribulose 5-phosphate from D-glucose 6-phosphate (oxidative stage): step 1/3.

疾病相关

Anemia, non-spherocytic hemolytic, due to G6PD deficiency

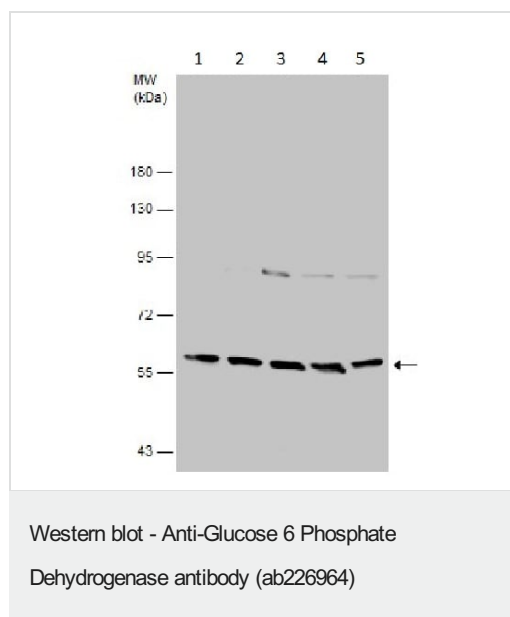
序列相似性

Belongs to the glucose-6-phosphate dehydrogenase family.

翻译后修饰

Acetylated by ELP3 at Lys-403; acetylation inhibits its homodimerization and enzyme activity. Deacetylated by SIRT2 at Lys-403; deacetylation stimulates its enzyme activity.

图片



All lanes : Anti-Glucose 6 Phosphate Dehydrogenase antibody (ab226964) at 1/500 dilution

Lane 1 : Neuro-2a (mouse neuroblastoma cell line) whole cell extracts

Lane 2 : C8D30 whole cell extracts

Lane 3 : NIH/3T3 (mouse embryo fibroblast cell line) whole cell extracts

Lane 4 : RAW 264.7 (mouse macrophage cell line transformed with Abelson murine leukemia virus) whole cell extracts

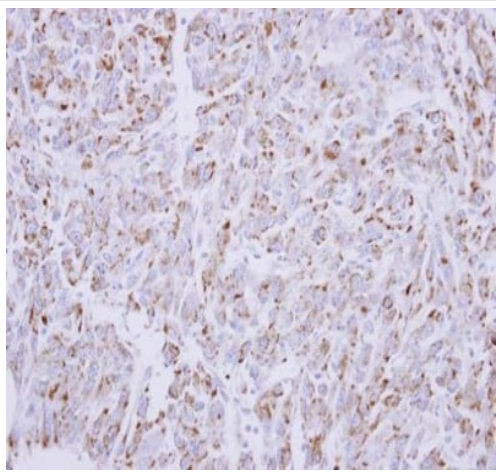
Lane 5 : C2C12 (mouse myoblast cell line) whole cell extracts

Lysates/proteins at 30 µg per lane.

Developed using the ECL technique.

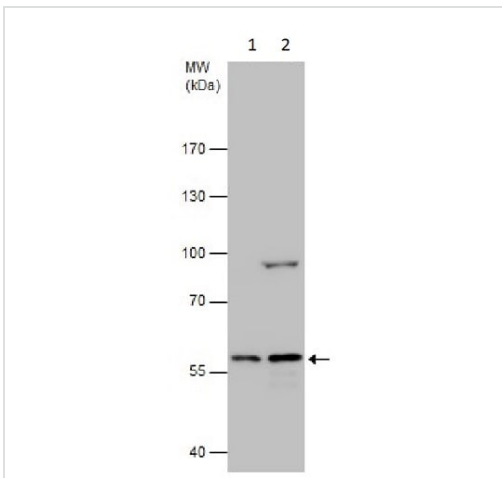
Predicted band size: 59 kDa

7.5% SDS-PAGE



Immunohistochemistry (Formalin/PFA-fixed paraffin-embedded sections) - Anti-Glucose 6 Phosphate Dehydrogenase antibody (ab226964)

Paraffin-embedded U87 xenograft tissue stained for Glucose 6 Phosphate Dehydrogenase with ab226964 (1/300 dilution) in immunohistochemical analysis.



Western blot - Anti-Glucose 6 Phosphate Dehydrogenase antibody (ab226964)

All lanes : Anti-Glucose 6 Phosphate Dehydrogenase antibody (ab226964) at 1/500 dilution

Lane 1 : PC-12 (rat adrenal gland pheochromocytoma cell line) whole cell extracts

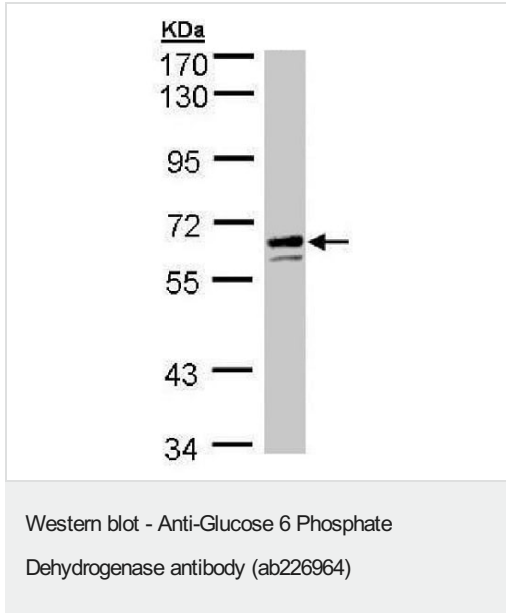
Lane 2 : Rat2 (rat fibroblast cell line) whole cell extracts

Lysates/proteins at 30 µg per lane.

Developed using the ECL technique.

Predicted band size: 59 kDa

7.5% SDS-PAGE



Anti-Glucose 6 Phosphate Dehydrogenase antibody (ab226964) at 1/500 dilution + HeLa S3 (human epithelial cell line from cervix adenocarcinoma) whole cell lysate at 30 µg

Developed using the ECL technique.

Predicted band size: 59 kDa

7.5% SDS PAGE

Please note: All products are "FOR RESEARCH USE ONLY. NOT FOR USE IN DIAGNOSTIC PROCEDURES"

Our Abpromise to you: Quality guaranteed and expert technical support

- Replacement or refund for products not performing as stated on the datasheet
- Valid for 12 months from date of delivery
- Response to your inquiry within 24 hours
- We provide support in Chinese, English, French, German, Japanese and Spanish
- Extensive multi-media technical resources to help you
- We investigate all quality concerns to ensure our products perform to the highest standards

If the product does not perform as described on this datasheet, we will offer a refund or replacement. For full details of the Abpromise, please visit <https://www.abcam.cn/abpromise> or contact our technical team.

Terms and conditions

- Guarantee only valid for products bought direct from Abcam or one of our authorized distributors