


### Anti-Glucagon Receptor antibody ab109279

#### 1 图像

#### 概述

产品名称	Anti-Glucagon Receptor抗体
描述	兔多克隆抗体to Glucagon Receptor
宿主	Rabbit
经测试应用	适用于: WB
种属反应性	与反应: Human 预测可用于: Macaque monkey, Gorilla 
免疫原	Synthetic peptide corresponding to Human Glucagon Receptor aa 300-400 conjugated to keyhole limpet haemocyanin. (Peptide available as <a href="#">ab129210</a> )
阳性对照	This antibody gave a positive signal in the following whole cell lysates: Caco2; HepG2; SW480.
常规说明	<p>The Life Science industry has been in the grips of a reproducibility crisis for a number of years. Abcam is leading the way in addressing this with our range of recombinant monoclonal antibodies and knockout edited cell lines for gold-standard validation. Please check that this product meets your needs before purchasing.</p> <p>If you have any questions, special requirements or concerns, please send us an inquiry and/or contact our Support team ahead of purchase. Recommended alternatives for this product can be found below, along with publications, customer reviews and Q&amp;As</p>

#### 性能

形式	Liquid
存放说明	Shipped at 4°C. Store at +4°C short term (1-2 weeks). Upon delivery aliquot. Store at -20°C or -80°C. Avoid freeze / thaw cycle.
存储溶液	pH: 7.40 Preservative: 0.02% Sodium azide Constituent: PBS
纯度	Batches of this product that have a concentration < 1mg/ml may have BSA added as a stabilising agent. If you would like information about the formulation of a specific lot, please contact our scientific support team who will be happy to help. Immunogen affinity purified

克隆

多克隆

同种型

IgG

应用

The Abpromise guarantee

Abpromise™承诺保证使用ab109279于以下的经测试应用

“应用说明”部分 下显示的仅为推荐的起始稀释度;实际最佳的稀释度/浓度应由使用者检定。

应用	Ab评论	说明
WB		1/250. Detects a band of approximately 54 kDa (predicted molecular weight: 54 kDa).

靶标

功能

This is a receptor for glucagon which plays a central role in regulating the level of blood glucose by controlling the rate of hepatic glucose production and insulin secretion. The activity of this receptor is mediated by G proteins which activate adenylyl cyclase and also a phosphatidylinositol-calcium second messenger system.

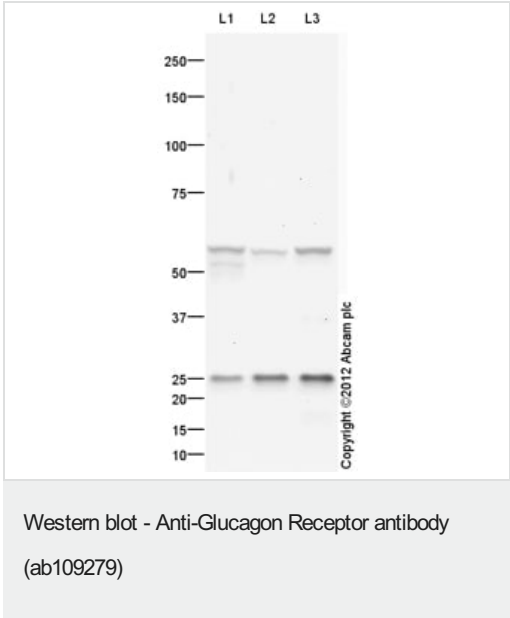
序列相似性

Belongs to the G-protein coupled receptor 2 family.

细胞定位

Cell membrane.

图片



**All lanes :** Anti-Glucagon Receptor antibody (ab109279) at 1/250 dilution (Milk Blocking - 3%)

**Lane 1 :** Caco 2 (Human colonic carcinoma cell line) Whole Cell Lysate

**Lane 2 :** HepG2 (Human hepatocellular liver carcinoma cell line) Whole Cell Lysate

**Lane 3 :** SW480 (Human colon adenocarcinoma cell line) Whole Cell Lysate

Lysates/proteins at 20 µg per lane.

Secondary

**All lanes :** Goat Anti-Rabbit IgG H&L (HRP) preadsorbed (**ab97080**) at 1/5000 dilution

Developed using the ECL technique.

Performed under reducing conditions.

**Predicted band size:** 54 kDa

**Observed band size:** 54 kDa

**Additional bands at:** 25 kDa, 51 kDa (possible cleavage fragment). We are unsure as to the identity of these extra bands.

**Exposure time:** 20 minutes

The band observed at 51 kDa could potentially be a cleaved form of Glucagon Receptor due to the presence of a 25 amino acid signal peptide.

**Please note:** All products are "FOR RESEARCH USE ONLY. NOT FOR USE IN DIAGNOSTIC PROCEDURES"

#### **Our Abpromise to you: Quality guaranteed and expert technical support**

---

- Replacement or refund for products not performing as stated on the datasheet
- Valid for 12 months from date of delivery
- Response to your inquiry within 24 hours
- We provide support in Chinese, English, French, German, Japanese and Spanish
- Extensive multi-media technical resources to help you
- We investigate all quality concerns to ensure our products perform to the highest standards

If the product does not perform as described on this datasheet, we will offer a refund or replacement. For full details of the Abpromise, please visit <https://www.abcam.cn/abpromise> or contact our technical team.

#### **Terms and conditions**

---

- Guarantee only valid for products bought direct from Abcam or one of our authorized distributors