



Anti-Gliadin antibody [14D5] ab36729

3 References **1 图像**

概述

产品名称	Anti-Gliadin抗体[14D5]
描述	小鼠单克隆抗体[14D5] to Gliadin
宿主	Mouse
特异性	This antibody reacts specifically with the deamidated peptide (KLQPFQPELPYPQPQ) when coated directly in an immunoplate. Does not react with Oats. This antibody reacts strongly with the deamidated peptide but cross-reacts about 5% with the non-deamidated peptide.
经测试应用	适用于: WB
种属反应性	与反应: Wheat, Hordeum vulgare, Secale cereale
免疫原	Gliadin-related peptide Lys57-Glu65-[alpha-gliadin (58-73)] KLQPFQPELPYPQPQ) coupled to immunogenic carrier protein.  Run BLAST with  Run BLAST with
表位	The epitope is located in the Lys57-Glu65-[alpha-gliadin (58-73)] (KLQPFQPELPYPQPQ) peptide.
常规说明	<p>The immunogen corresponds to a deamidated form of a region that includes the T-cell epitopes, including the immunodominant PQPQLPY region and two PXPQP motifs associated with binding to IgA from patients with celiac disease. Complete homology exists between residues 63-73, 70-80 and 77-87 of wheat alpha gliadin.</p> <p>The Life Science industry has been in the grips of a reproducibility crisis for a number of years. Abcam is leading the way in addressing this with our range of recombinant monoclonal antibodies and knockout edited cell lines for gold-standard validation. Please check that this product meets your needs before purchasing.</p> <p>If you have any questions, special requirements or concerns, please send us an inquiry and/or contact our Support team ahead of purchase. Recommended alternatives for this product can be found below, along with publications, customer reviews and Q&As</p>

性能

形式	Liquid
存放说明	Shipped at 4°C. Upon delivery aliquot and store at -20°C. Avoid freeze / thaw cycles.

存储溶液	pH: 7.40 Preservative: 0.097% Sodium azide Constituents: 2.9% Sodium chloride, 0.0268% PBS
纯度	Protein A purified
Primary antibody说明	The immunogen corresponds to a deamidated form of a region that includes the T-cell epitopes, including the immunodominant PQQQLPY region and two PXPQP motifs associated with binding to IgA from patients with celiac disease. Complete homology exists between residues 63-73, 70-80 and 77-87 of wheat alpha gliadin.
克隆	单克隆
克隆编号	14D5
骨髓瘤	x63-Ag8.653
同种型	IgG2a
轻链类型	kappa

应用

The Abpromise guarantee **Abpromise™**承诺保证使用ab36729于以下的经测试应用

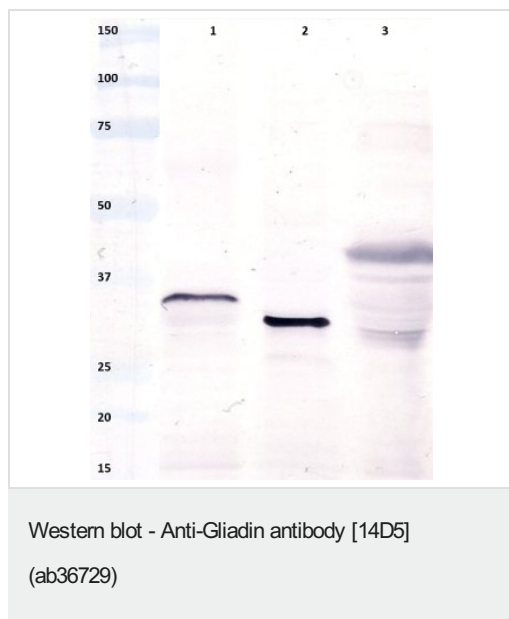
“应用说明”部分 下显示的仅为推荐的起始稀释度;实际最佳的稀释度/浓度应由使用者检定。

应用	Ab评论	说明
WB		1/1000. dilution 1/1000

靶标

相关性	Celiac disease is associated with a CD4+ T-cell response to epitopes of gliadin presented by HLA-DQ2 or -DQ8 class II MHC molecules. These epitopes are present in a 33-mer peptide of wheat alpha-gliadin, residues 56-88, which is resistant to digestion and forms a substrate for tissue transglutaminase (TG2), generating the glutamic acid residues essential for binding to HLA-DQ2. The alcohol soluble proteins (prolamins) from wheat, rye, barley and oats produce the harmful effect of coeliac disease or gluten sensitive enteropathy in humans by causing characteristic changes in the intestinal mucosa. Patients so affected must avoid eating these grains and replace them with rice, corn, potatoes, etc. Many gluten-free foods are produced industrially, thus several immunoassays have been developed for determination of gliadin in supposedly gluten-free foods.
细胞定位	Cytoplasmic; major seed storage protein in wheat.

图片



All lanes : Anti-Gliadin antibody [14D5] (ab36729) at 1/1000 dilution

Lane 1 : Rye (*Secale cereale*) Lysate

Lane 2 : Barley (*Hordeum vulgare*) Lysate

Lane 3 : Wheat Lysate

Performed under reducing conditions.

Please note: All products are "FOR RESEARCH USE ONLY. NOT FOR USE IN DIAGNOSTIC PROCEDURES"

Our Abpromise to you: Quality guaranteed and expert technical support

- Replacement or refund for products not performing as stated on the datasheet
- Valid for 12 months from date of delivery
- Response to your inquiry within 24 hours
- We provide support in Chinese, English, French, German, Japanese and Spanish
- Extensive multi-media technical resources to help you
- We investigate all quality concerns to ensure our products perform to the highest standards

If the product does not perform as described on this datasheet, we will offer a refund or replacement. For full details of the Abpromise, please visit <https://www.abcam.cn/abpromise> or contact our technical team.

Terms and conditions

- Guarantee only valid for products bought direct from Abcam or one of our authorized distributors