

Anti-GIV antibody ab113890

3 References 2 图像

概述	
产品名称	Anti-GIV抗体
描述	兔多克隆抗体to GIV
宿主	Rabbit
经测试应用	适用于: ELISA, ICC/IF, WB, IHC-P
种属反应性	与反应: Mouse, Rat, Human
免疫原	Synthetic peptide corresponding to Human GIV conjugated to keyhole limpet haemocyanin.
常规说明	<p>The Life Science industry has been in the grips of a reproducibility crisis for a number of years. Abcam is leading the way in addressing this with our range of recombinant monoclonal antibodies and knockout edited cell lines for gold-standard validation. Please check that this product meets your needs before purchasing.</p> <p>If you have any questions, special requirements or concerns, please send us an inquiry and/or contact our Support team ahead of purchase. Recommended alternatives for this product can be found below, along with publications, customer reviews and Q&As</p>

性能	
形式	Liquid
存放说明	Shipped at 4°C. Store at +4°C short term (1-2 weeks). Store at -20°C or -80°C. Avoid freeze / thaw cycle.
存储溶液	pH: 7.4 Preservative: 0.02% Sodium azide Constituent: 99% PBS
纯度	Immunogen affinity purified
克隆	多克隆
同种型	IgG

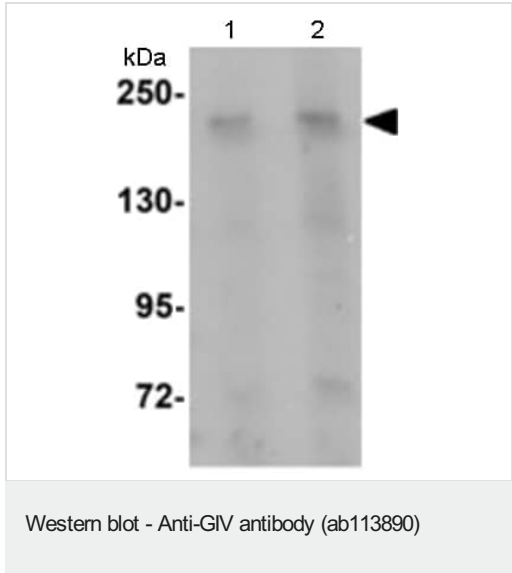
应用	
The Abpromise guarantee	<u>Abpromise™</u> 承诺保证使用ab113890于以下的经测试应用
“应用说明”部分 下显示的仅为推荐的起始稀释度;实际最佳的稀释度/浓度应由使用者检定。	

应用	Ab评论	说明
ELISA		Use at an assay dependent concentration.
ICC/IF		Use at an assay dependent concentration.
WB		Use a concentration of 1 - 2 µg/ml. Predicted molecular weight: 216 kDa.
IHC-P		Use a concentration of 5 µg/ml.

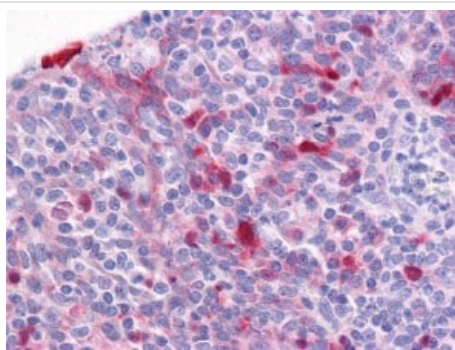
靶标

功能	Plays a role as a key modulator of the AKT-mTOR signaling pathway controlling the tempo of the process of newborn neurons integration during adult neurogenesis, including correct neuron positioning, dendritic development and synapse formation. Enhances phosphoinositide 3-kinase (PI3K)-dependent phosphorylation and kinase activity of AKT1/PKB, but does not possess kinase activity itself. Phosphorylation of AKT1/PKB thereby induces the phosphorylation of downstream effectors GSK3 and FOXO1/FKHR, and regulates DNA replication and cell proliferation (By similarity). Essential for the integrity of the actin cytoskeleton and for cell migration. Required for formation of actin stress fibers and lamellipodia. May be involved in membrane sorting in the early endosome.
组织特异性	Expressed ubiquitously.
序列相似性	Belongs to the CCDC88 family.
翻译后修饰	Phosphorylation is induced by epidermal growth factor (EGF) in a phosphoinositide 3-kinase (PI3K)-dependent manner. Phosphorylation by AKT1/PKB is necessary for the delocalization from the cell membrane and for cell migration.
细胞定位	Membrane. Cell membrane. Cytoplasm > cytosol. Cytoplasmic vesicle. Cell projection > lamellipodium. Localizes to the cell membrane through interaction with phosphoinositides.

图片



Lane 1 : Anti-GIV antibody (ab113890) at 1 µg/ml
Lane 2 : Anti-GIV antibody (ab113890) at 2 µg/ml
All lanes : Rat brain lysate
Predicted band size: 216 kDa



ab113890, at 5 µg/ml, staining GIV in Formalin-Fixed, Paraffin-Embedded Human tonsil tissue by immunohistochemistry.

Immunohistochemistry (Formalin/PFA-fixed paraffin-embedded sections) - Anti-GIV antibody (ab113890)

Please note: All products are "FOR RESEARCH USE ONLY. NOT FOR USE IN DIAGNOSTIC PROCEDURES"

Our Abpromise to you: Quality guaranteed and expert technical support

- Replacement or refund for products not performing as stated on the datasheet
- Valid for 12 months from date of delivery
- Response to your inquiry within 24 hours
- We provide support in Chinese, English, French, German, Japanese and Spanish
- Extensive multi-media technical resources to help you
- We investigate all quality concerns to ensure our products perform to the highest standards

If the product does not perform as described on this datasheet, we will offer a refund or replacement. For full details of the Abpromise, please visit <https://www.abcam.cn/abpromise> or contact our technical team.

Terms and conditions

- Guarantee only valid for products bought direct from Abcam or one of our authorized distributors