

# Anti-GIT1 antibody ab86235

3 图像

### 概述

产品名称	Anti-GIT1抗体
描述	兔多克隆抗体to GIT1
宿主	Rabbit
经测试应用	适用于: WB, IP, IHC-P
种属反应性	与反应: Human 预测可用于: Chimpanzee, Rhesus monkey, Gorilla 
免疫原	Synthetic peptide corresponding to a region between residue 375 and 425 of Human GIT1 (NP_054749.2).
阳性对照	Whole cell lysate from HeLa cells and 293T cells.
常规说明	<p>The Life Science industry has been in the grips of a reproducibility crisis for a number of years. Abcam is leading the way in addressing this with our range of recombinant monoclonal antibodies and knockout edited cell lines for gold-standard validation. Please check that this product meets your needs before purchasing.</p> <p>If you have any questions, special requirements or concerns, please send us an inquiry and/or contact our Support team ahead of purchase. Recommended alternatives for this product can be found below, along with publications, customer reviews and Q&amp;As</p>

### 性能

形式	Liquid
存放说明	Shipped at 4°C. Upon delivery aliquot and store at -20°C. Avoid freeze / thaw cycles.
存储溶液	<p>pH: 6.8</p> <p>Preservative: 0.09% Sodium azide</p> <p>Constituents: 0.1% BSA, Tris buffered saline</p>
纯度	Immunogen affinity purified
克隆	多克隆
同种型	IgG

### 应用

**The Abpromise guarantee****Abpromise™**承诺保证使用ab86235于以下的经测试应用

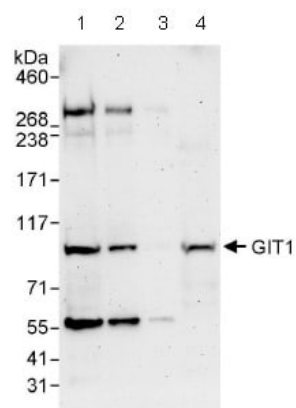
“应用说明”部分 下显示的仅为推荐的起始稀释度;实际最佳的稀释度/浓度应由使用者检定。

应用	Ab评论	说明
WB		1/2000 - 1/10000. Predicted molecular weight: 84 kDa.
IP		Use at 2-5 µg/mg of lysate.
IHC-P		1/100 - 1/500. Perform heat mediated antigen retrieval with citrate buffer pH 6 before commencing with IHC staining protocol.

**靶标**

功能	GTPase-activating protein for the ADP ribosylation factor family. May serve as a scaffold to bring together molecules to form signaling modules controlling vesicle trafficking, adhesion and cytoskeletal organization. Increases the speed of cell migration, as well as the size and rate of formation of protrusions, possibly by targeting PAK1 to adhesions and the leading edge of lamellipodia. Sequesters inactive non-tyrosine-phosphorylated paxillin in cytoplasmic complexes.
序列相似性	Contains 3 ANK repeats. Contains 1 Arf-GAP domain.
结构域	The paxillin-binding domain is masked in the full-length protein and is regulated by ARHGEF6.
翻译后修饰	Phosphorylated on tyrosine residues by PTK2 and SRC in growing fibroblasts. Tyrosine-phosphorylation is increased following cell spreading on fibronectin, decreased in cells arrested in mitosis and increased in the ensuing G1 phase.
细胞定位	Cytoplasm. Cycles between at least 3 distinct intracellular compartments, including focal adhesions, cytoplasmic complexes and membrane protrusions. During cell migration, when cells detach, moves from the adhesions into the cytoplasmic complexes towards the leading edge, while, when cells adhere, it is found in vinculin-containing adhesions. Recruitment to adhesions may be mediated by active tyrosine-phosphorylated paxillin.

**图片**



Western blot - Anti-GIT1 antibody (ab86235)

**All lanes :** Anti-GIT1 antibody (ab86235) at 0.04 µg/ml

**Lane 1 :** Whole cell lysate from HeLa cells at 50 µg

**Lane 2 :** Whole cell lysate from HeLa cells at 15 µg

**Lane 3 :** Whole cell lysate from HeLa cells at 5 µg

**Lane 4 :** Whole cell lysate from 293T cells at 50 µg

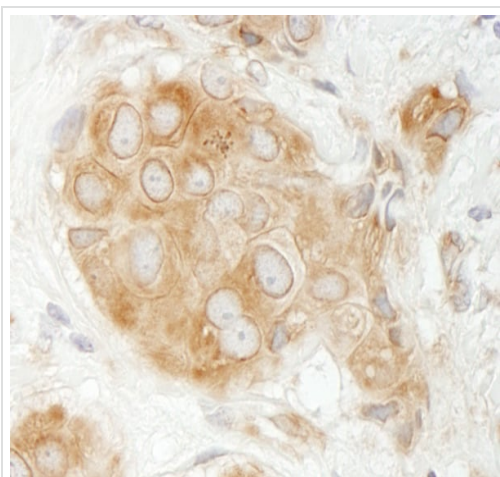
Developed using the ECL technique.

**Predicted band size:** 84 kDa

**Observed band size:** 90 kDa

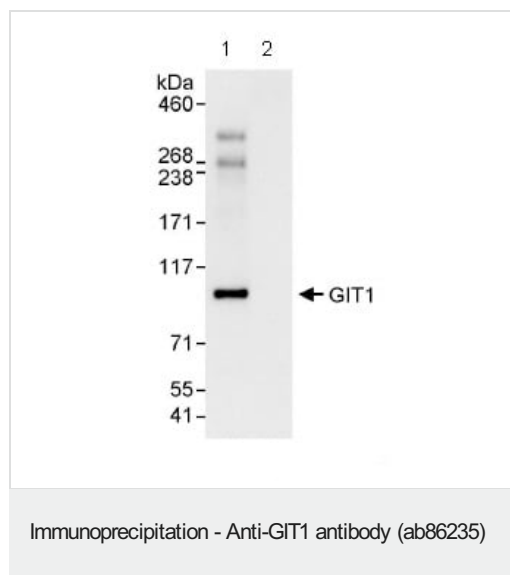
**Additional bands at:** 275 kDa, 56 kDa. We are unsure as to the identity of these extra bands.

**Exposure time:** 3 minutes



Immunohistochemistry (Formalin/PFA-fixed paraffin-embedded sections) - Anti-GIT1 antibody (ab86235)

Immunohistochemistry (Formalin/PFA-fixed paraffin-embedded sections) analysis of human breast carcinoma tissue labelling GIT1 with ab86235 at 1/200 (1 µg/ml). Detection: DAB.



Detection of GIT1 in Immunoprecipitates of Whole cell lysate from HeLa cells (1 mg for IP, 20% of IP loaded) using ab86235 at 3 µg/mg lysate for IP (Lane 1) and at 0.4 µg/ml for subsequent Western blot detection. Lane 2 represents control IgG IP. Detection: Chemiluminescence with an exposure time of 30 seconds.

**Please note:** All products are "FOR RESEARCH USE ONLY. NOT FOR USE IN DIAGNOSTIC PROCEDURES"

### Our Abpromise to you: Quality guaranteed and expert technical support

- Replacement or refund for products not performing as stated on the datasheet
- Valid for 12 months from date of delivery
- Response to your inquiry within 24 hours
- We provide support in Chinese, English, French, German, Japanese and Spanish
- Extensive multi-media technical resources to help you
- We investigate all quality concerns to ensure our products perform to the highest standards

If the product does not perform as described on this datasheet, we will offer a refund or replacement. For full details of the Abpromise, please visit <https://www.abcam.cn/abpromise> or contact our technical team.

### Terms and conditions

- Guarantee only valid for products bought direct from Abcam or one of our authorized distributors