




Anti-GIRK2 antibody ab65096

★★★★★ [1 Abreviews](#) [9 References](#) [1 图像](#)

概述

产品名称	Anti-GIRK2抗体
描述	山羊多克隆抗体to GIRK2
宿主	Goat
经测试应用	适用于: ELISA, IHC-P, WB, ICC/IF, IHC-FrFI
种属反应性	与反应: Mouse, Rat, Human 预测可用于: Syrian hamster, Orangutan 
免疫原	Synthetic peptide within Human GIRK2 aa 350 to the C-terminus (Cysteine residue). The exact immunogen sequence used to generate this antibody is proprietary information. If additional detail on the immunogen is needed to determine the suitability of the antibody for your needs, please <u>contact</u> our Scientific Support team to discuss your requirements.  Run BLAST with  Run BLAST with
阳性对照	WB: Human Brain (Substantia Nigra) tissue lysate.
常规说明	<p>The Life Science industry has been in the grips of a reproducibility crisis for a number of years. Abcam is leading the way in addressing this with our range of recombinant monoclonal antibodies and knockout edited cell lines for gold-standard validation. Please check that this product meets your needs before purchasing.</p> <p>If you have any questions, special requirements or concerns, please send us an inquiry and/or contact our Support team ahead of purchase. Recommended alternatives for this product can be found below, along with publications, customer reviews and Q&As</p>

性能

形式	Liquid
存放说明	Shipped at 4°C. Upon delivery aliquot and store at -20°C or -80°C. Avoid repeated freeze / thaw cycles.
存储溶液	pH: 7.30 Preservative: 0.02% Sodium azide Constituents: 0.5% Tris buffered saline, 0.5% BSA Without Mg2+ and Ca2+
纯度	Immunogen affinity purified

纯化说明	Purified from goat serum by ammonium sulphate precipitation followed by antigen affinity chromatography using the immunizing peptide.
克隆	多克隆
同种型	IgG

应用

The Abpromise guarantee **Abpromise™**承诺保证使用ab65096于以下的经测试应用

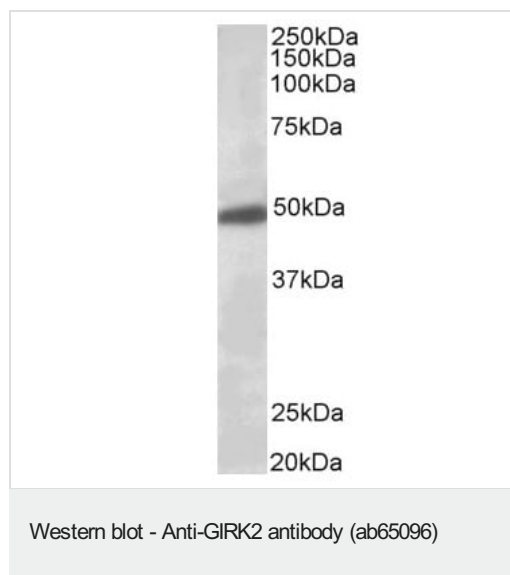
“应用说明”部分 下显示的仅为推荐的起始稀释度;实际最佳的稀释度/浓度应由使用者检定。

应用	Ab评论	说明
ELISA		Use at an assay dependent concentration.
IHC-P		Use at an assay dependent concentration.
WB		Use a concentration of 2 - 6 µg/ml. Detects a band of approximately 48 kDa (predicted molecular weight: 47 kDa). 1 hour primary incubation is recommended for this product.
ICC/IF		Use at an assay dependent concentration. PubMed: 24586273
IHC-FrFI	★★★★★ (1)	Use at an assay dependent concentration.

靶标

功能	This potassium channel may be involved in the regulation of insulin secretion by glucose and/or neurotransmitters acting through G-protein-coupled receptors. Inward rectifier potassium channels are characterized by a greater tendency to allow potassium to flow into the cell rather than out of it. Their voltage dependence is regulated by the concentration of extracellular potassium; as external potassium is raised, the voltage range of the channel opening shifts to more positive voltages. The inward rectification is mainly due to the blockage of outward current by internal magnesium.
组织特异性	Most abundant in cerebellum, and to a lesser degree in islets and exocrine pancreas.
疾病相关	Keppen-Lubinsky syndrome
序列相似性	Belongs to the inward rectifier-type potassium channel (TC 1.A.2.1) family. KCNJ6 subfamily.
细胞定位	Membrane.

图片



Anti-GIRK2 antibody (ab65096) at 0.5 µg/ml + Human Brain
(Substantia Nigra) tissue lysate in RIPA buffer at 35 µg

Predicted band size: 47 kDa

Observed band size: 48 kDa

Primary incubation for 1 hour. Detected by chemiluminescence.

Please note: All products are "FOR RESEARCH USE ONLY. NOT FOR USE IN DIAGNOSTIC PROCEDURES"

Our Abpromise to you: Quality guaranteed and expert technical support

- Replacement or refund for products not performing as stated on the datasheet
- Valid for 12 months from date of delivery
- Response to your inquiry within 24 hours
- We provide support in Chinese, English, French, German, Japanese and Spanish
- Extensive multi-media technical resources to help you
- We investigate all quality concerns to ensure our products perform to the highest standards

If the product does not perform as described on this datasheet, we will offer a refund or replacement. For full details of the Abpromise, please visit <https://www.abcam.cn/abpromise> or contact our technical team.

Terms and conditions

- Guarantee only valid for products bought direct from Abcam or one of our authorized distributors