

### Anti-GIP antibody ab83177

#### 1 图像

#### 概述

---

产品名称	Anti-GIP抗体
描述	兔多克隆抗体to GIP
宿主	Rabbit
经测试应用	适用于: WB
种属反应性	与反应: Human
免疫原	Synthetic peptide corresponding to Human GIP aa 50-150 conjugated to keyhole limpet haemocyanin. (Peptide available as <a href="#">ab94377</a> )
阳性对照	Recombinant Human GIP protein ( <a href="#">ab116416</a> ) can be used as a positive control in WB. This antibody gave a positive signal in the following lysates: HEK293 whole cell; A498 whole cell; MDA-MB-361 whole cell; JEG-3 whole cell; Human Placenta Tissue
常规说明	<p>The Life Science industry has been in the grips of a reproducibility crisis for a number of years. Abcam is leading the way in addressing this with our range of recombinant monoclonal antibodies and knockout edited cell lines for gold-standard validation. Please check that this product meets your needs before purchasing.</p> <p>If you have any questions, special requirements or concerns, please send us an inquiry and/or contact our Support team ahead of purchase. Recommended alternatives for this product can be found below, along with publications, customer reviews and Q&amp;As</p>

#### 性能

---

形式	Liquid
存放说明	Shipped at 4°C. Store at +4°C short term (1-2 weeks). Upon delivery aliquot. Store at -20°C or -80°C. Avoid freeze / thaw cycle.
存储溶液	pH: 7.40 Preservative: 0.02% Sodium azide Constituent: PBS
纯度	Batches of this product that have a concentration < 1mg/ml may have BSA added as a stabilising agent. If you would like information about the formulation of a specific lot, please contact our scientific support team who will be happy to help. Immunogen affinity purified

克隆 多克隆  
同种型 IgG

## 应用

**The Abpromise guarantee** **Abpromise™**承诺保证使用ab83177于以下的经测试应用

“应用说明”部分 下显示的仅为推荐的起始稀释度;实际最佳的稀释度/浓度应由使用者检定。

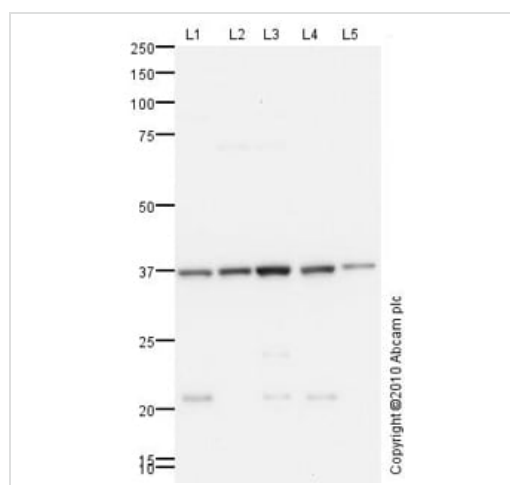
应用	Ab评论	说明
WB		Use a concentration of 1 µg/ml. Detects a band of approximately 37 kDa (predicted molecular weight: 32 kDa).

## 靶标

序列相似性 Contains 1 C1q domain.  
Contains 1 collagen-like domain.

细胞定位 Secreted.

## 图片



Western blot - Anti-GIP antibody (ab83177)

**All lanes** : Anti-GIP antibody (ab83177) at 1 µg/ml

**Lane 1** : HEK293 (Human embryonic kidney cell line) Whole Cell Lysate

**Lane 2** : A498 (Human Kidney Carcinoma) Whole Cell Lysate

**Lane 3** : MDA-MB-361 (Human breast adenocarcinoma cell line) Whole Cell Lysate Whole Cell Lysate

**Lane 4** : JEG-3 (Human placental choriocarcinoma cell line) Whole Cell Lysate

**Lane 5** : Human placenta tissue lysate - total protein (**ab29745**)

Lysates/proteins at 10 µg per lane.

### Secondary

**All lanes** : Goat polyclonal to Rabbit IgG - H&L - Pre-Adsorbed (HRP) at 1/3000 dilution

Developed using the ECL technique.

Performed under reducing conditions.

**Predicted band size:** 32 kDa

**Observed band size:** 37 kDa

**Additional bands at:** 21 kDa. We are unsure as to the identity of these extra bands.

GIP contains a number of potential glycosylation sites (SwissProt) which may explain its migration at a higher molecular weight than predicted.

**Please note:** All products are "FOR RESEARCH USE ONLY. NOT FOR USE IN DIAGNOSTIC PROCEDURES"

### **Our Abpromise to you: Quality guaranteed and expert technical support**

---

- Replacement or refund for products not performing as stated on the datasheet
- Valid for 12 months from date of delivery
- Response to your inquiry within 24 hours
  
- We provide support in Chinese, English, French, German, Japanese and Spanish
- Extensive multi-media technical resources to help you
- We investigate all quality concerns to ensure our products perform to the highest standards

If the product does not perform as described on this datasheet, we will offer a refund or replacement. For full details of the Abpromise, please visit <https://www.abcam.cn/abpromise> or contact our technical team.

### **Terms and conditions**

---

- Guarantee only valid for products bought direct from Abcam or one of our authorized distributors