


Anti-Ghrelin Receptor/GHS-R antibody ab85104

★★★★☆ [4 Abreviews](#) [12 References](#) [2 图像](#)

概述

产品名称	Anti-Ghrelin Receptor/GHS-R抗体
描述	兔多克隆抗体to Ghrelin Receptor/GHS-R
宿主	Rabbit
经测试应用	适用于: WB, IHC-P
种属反应性	与反应: Rat, Human 预测可用于: Mouse 
免疫原	Synthetic peptide. This information is proprietary to Abcam and/or its suppliers.
常规说明	<p>The Life Science industry has been in the grips of a reproducibility crisis for a number of years. Abcam is leading the way in addressing this with our range of recombinant monoclonal antibodies and knockout edited cell lines for gold-standard validation. Please check that this product meets your needs before purchasing.</p> <p>If you have any questions, special requirements or concerns, please send us an inquiry and/or contact our Support team ahead of purchase. Recommended alternatives for this product can be found below, along with publications, customer reviews and Q&As</p>

性能

形式	Lyophilized:Reconstitute with 200ul distilled sterile water. Please note that if you receive this product in liquid form it has already been reconstituted as described and no further reconstitution is necessary.
存放说明	Shipped at 4°C. Upon delivery aliquot and store at -20°C. Avoid freeze / thaw cycles.
存储溶液	Preservative: 0.02% Sodium azide Constituent: 2% BSA
纯度	Immunogen affinity purified
克隆	多克隆
同种型	IgG

应用

The Abpromise guarantee

Abpromise™ 承诺保证使用ab85104于以下的经测试应用

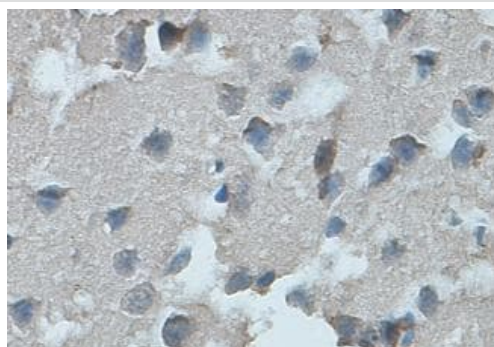
“应用说明”部分 下显示的仅为推荐的起始稀释度;实际最佳的稀释度/浓度应由使用者检定。

应用	Ab评论	说明
WB	★★★★★ (2)	1/200 - 1/1000. Detects a band of approximately 40 kDa.
IHC-P		1/100 - 1/500.

靶标

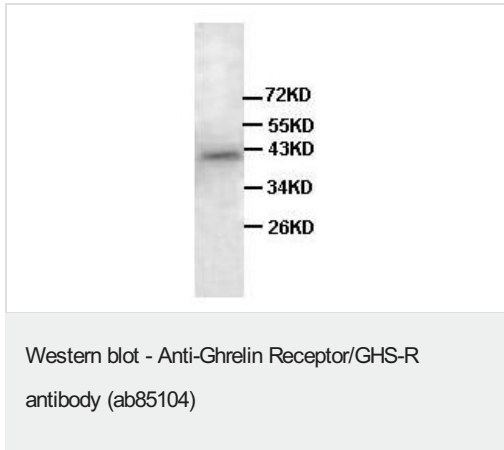
功能	Receptor for ghrelin, coupled to G-alpha-11 proteins. Stimulates growth hormone secretion. Binds also other growth hormone releasing peptides (GHRP) (e.g. Met-enkephalin and GHRP-6) as well as non-peptide, low molecular weight secretagogues (e.g. L-692,429, MK-0677, adenosine).
组织特异性	Pituitary and hypothalamus.
疾病相关	Defects in GHSR may be a cause of idiopathic short stature autosomal (ISSA) [MIM:604271]. Short stature is defined by a subnormal rate of growth.
序列相似性	Belongs to the G-protein coupled receptor 1 family.
细胞定位	Cell membrane.

图片



ab85104 at 1/200 dilution staining Ghrelin Receptor/GHS-R in human fetal brain tissue section by immunohistochemistry (Formalin/ PFA fixed, paraffin-embedded tissue sections).

Immunohistochemistry (Formalin/PFA-fixed paraffin-embedded sections) - Anti-Ghrelin Receptor/GHS-R antibody (ab85104)



Rat liver lysate, 1:500 dilution.

Please note: All products are "FOR RESEARCH USE ONLY. NOT FOR USE IN DIAGNOSTIC PROCEDURES"

Our Abpromise to you: Quality guaranteed and expert technical support

- Replacement or refund for products not performing as stated on the datasheet
- Valid for 12 months from date of delivery
- Response to your inquiry within 24 hours
- We provide support in Chinese, English, French, German, Japanese and Spanish
- Extensive multi-media technical resources to help you
- We investigate all quality concerns to ensure our products perform to the highest standards

If the product does not perform as described on this datasheet, we will offer a refund or replacement. For full details of the Abpromise, please visit <https://www.abcam.cn/abpromise> or contact our technical team.

Terms and conditions

- Guarantee only valid for products bought direct from Abcam or one of our authorized distributors