

### Anti-Geminin antibody [EPR14637] ab195047

敲除验证
重组
RabMAb

★★★★★
[3 Abreviews](#)
[7 References](#)
[7 图像](#)

#### 概述

产品名称	Anti-Geminin抗体[EPR14637]
描述	兔单克隆抗体[EPR14637] to Geminin
宿主	Rabbit
经测试应用	适用于: WB, ICC/IF, IHC-P
种属反应性	与反应: Human
免疫原	Recombinant fragment. This information is proprietary to Abcam and/or its suppliers.
阳性对照	WB: HepG2, HeLa (treated with thymidine), and HeLa whole cell lysate. IHC-P: Human triple-negative breast cancer and Human tonsil tissue. ICC/IF: MCF-7 cells
常规说明	<p>This product is a recombinant monoclonal antibody, which offers several advantages including:</p> <ul style="list-style-type: none"> <li>- High batch-to-batch consistency and reproducibility</li> <li>- Improved sensitivity and specificity</li> <li>- Long-term security of supply</li> <li>- Animal-free production</li> </ul> <p>For more information <a href="#">see here</a>.</p> <p>Our RabMAb<sup>®</sup> technology is a patented hybridoma-based technology for making rabbit monoclonal antibodies. For details on our patents, please refer to <a href="#">RabMAb<sup>®</sup> patents</a>.</p>

#### 性能

形式	Liquid
存放说明	Shipped at 4°C. Store at +4°C short term (1-2 weeks). Upon delivery aliquot. Store at -20°C long term. Avoid freeze / thaw cycle.
存储溶液	<p>pH: 7.2</p> <p>Preservative: 0.01% Sodium azide</p> <p>Constituents: 59% PBS, 40% Glycerol, 0.05% BSA</p>
纯度	Protein A purified
克隆	单克隆
克隆编号	EPR14637
同种型	IgG

应用

The Abpromise guarantee

Abpromise™承诺保证使用ab195047于以下的经测试应用

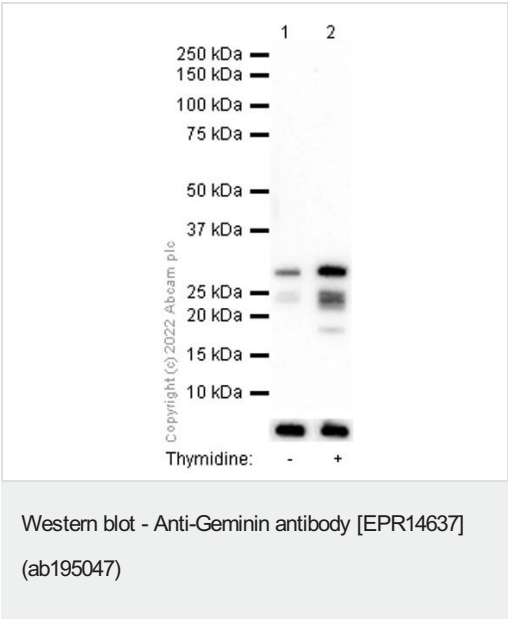
“应用说明”部分 下显示的仅为推荐的起始稀释度;实际最佳的稀释度/浓度应由使用者检定。

应用	Ab评论	说明
WB	★★★★★ (1)	1/500. Predicted molecular weight: 24 kDa.
ICC/IF	★★★★★ (2)	1/100.
IHC-P		1/500. Perform heat mediated antigen retrieval with Tris/EDTA buffer pH 9.0 before commencing with IHC staining protocol.

靶标

功能	Inhibits DNA replication by preventing the incorporation of MCM complex into prereplication complex (pre-RC). It is degraded during the mitotic phase of the cell cycle. Its destruction at the metaphase-anaphase transition permits replication in the succeeding cell cycle.
序列相似性	Belongs to the geminin family.
发展阶段	Absent during G1 phase, accumulates during S, G2, and M phases, and disappears at the time of the metaphase-anaphase transition.

图片



**All lanes :** Anti-Geminin antibody [EPR14637] (ab195047) at 1/1000 dilution

**Lane 1 :** Untreated HeLa (Human epithelial cells from cervix adenocarcinoma) whole cell lysate

**Lane 2 :** HeLa treated with 2mM thymidine for 16 hours whole cell lysate

Lysates/proteins at 15 µg per lane.

**Secondary**

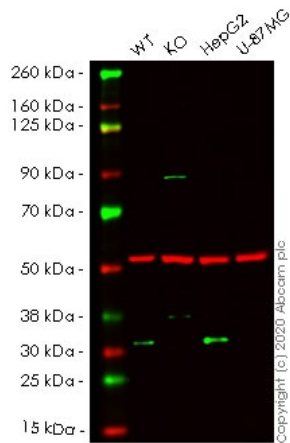
**All lanes :** Goat Anti-Rabbit IgG H&L (HRP) ([ab97051](#)) at 1/20000 dilution

**Predicted band size:** 24 kDa

**Exposure time:** 20 seconds

Blocking and diluting buffer and concentration: 5% NFDM/TBST.

Geminin is regulated during apoptosis by site-specific cleavage, resulting in the generation of two lower molecular weight cleavage products ( $21,462 \pm 2.7$  Da and  $25,082 \pm 2$  Da). (PMID: 17261582)



Western blot - Anti-Geminin antibody [EPR14637] (ab195047)

**All lanes :** Anti-Geminin antibody [EPR14637] (ab195047) at 1/500 dilution

**Lane 1 :** Wild-type HeLa lysate

**Lane 2 :** Geminin DNA Replication Inhibitor knockout HeLa lysate

**Lane 3 :** HepG2 lysate

**Lane 4 :** U-87 MG lysate

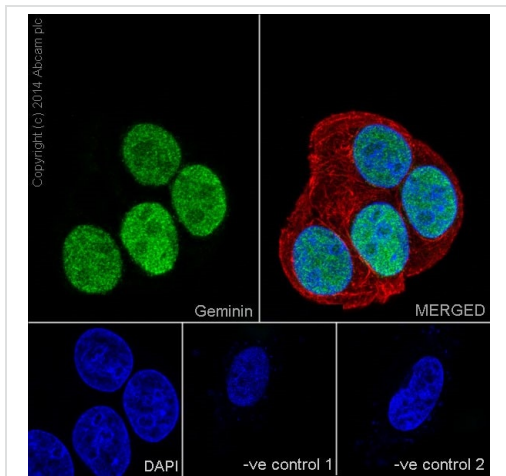
Lysates/proteins at 20 µg per lane.

Performed under reducing conditions.

**Predicted band size:** 24 kDa

**Lanes 1-4:** Merged signal (red and green). Green - ab195047 observed at 32 kDa. Red - loading control **ab7291** observed at 50 kDa.

ab195047 Anti-Geminin antibody [EPR14637] was shown to specifically react with Geminin DNA Replication Inhibitor in wild-type HeLa cells. Loss of signal was observed when knockout cell line **ab264972** (knockout cell lysate **ab257450**) was used. Wild-type and Geminin DNA Replication Inhibitor knockout samples were subjected to SDS-PAGE. ab195047 and Anti-alpha Tubulin antibody [DM1A] - Loading Control (**ab7291**) were incubated overnight at 4°C at 1 in 500 and 1 in 20000 dilution respectively. Blots were developed with Goat anti-Rabbit IgG H&L (IRDye® 800CW) preadsorbed (**ab216773**) and Goat anti-Mouse IgG H&L (IRDye® 680RD) preadsorbed (**ab216776**) secondary antibodies at 1 in 20000 dilution for 1 hour at room temperature before imaging.



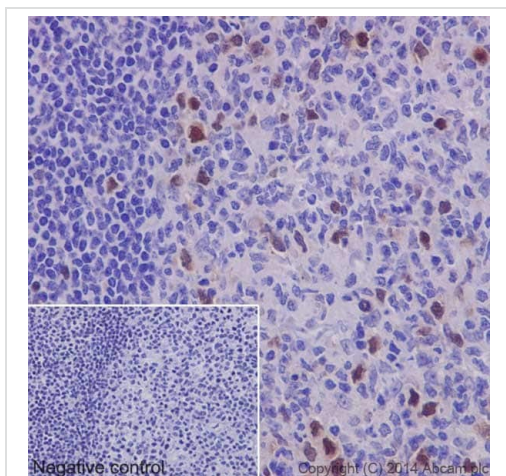
Immunocytochemistry/ Immunofluorescence - Anti-Geminin antibody [EPR14637] (ab195047)

Immunofluorescent analysis of 4% paraformaldehyde-fixed, 0.1% Triton X-100 permeabilized MCF-7 (Human breast adenocarcinoma cell line) cells labeling Geminin with ab195047 at 1/100 followed by Goat anti-rabbit IgG (Alexa Fluor® 488) (**ab150077**) secondary antibody at 1/500 (green). Confocal image showing nuclear staining on MCF-7 cell line. The nuclear counterstain is DAPI (blue). Tubulin is detected with **ab7291** (anti-Tubulin mouse mAb) at 1/1000 and **ab150120** (Alexa Fluor® 594 Goat anti-Mouse secondary) at 1/500 (red).

The negative controls are as follows:-

-ve control 1 - ab195047 at 1/100 followed by **ab150120** (Alexa Fluor® 594 Goat anti-Mouse secondary) at 1/500.

-ve control 2. - **ab7291** (anti-Tubulin mouse mAb) at 1/1000 followed by **ab150077** (Alexa Fluor® 488 Goat Anti-Rabbit IgG H&L) at 1/500.

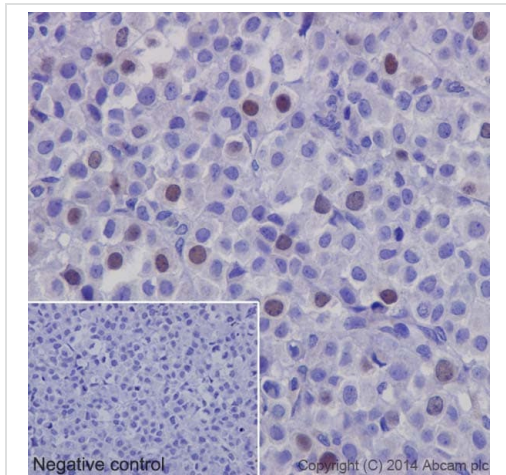


Immunohistochemistry (Formalin/PFA-fixed paraffin-embedded sections) - Anti-Geminin antibody [EPR14637] (ab195047)

Immunohistochemical analysis of paraffin-embedded Human tonsil tissue labeling Geminin with ab195047 at 1/500 followed by Goat Anti-Rabbit IgG H&L (HRP) (**ab97051**) at 1/500. Nucleus staining on Human tonsil tissue is observed. Counter stained with Hematoxylin.

Negative control: Used PBS instead of primary antibody and **ab97051** at 1/500 as secondary antibody.

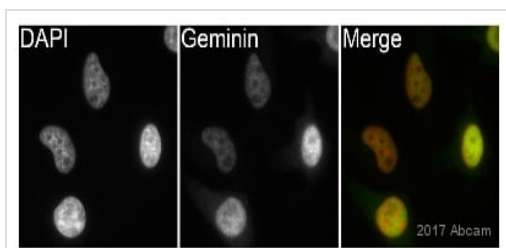
Perform heat mediated antigen retrieval with Tris/EDTA buffer pH 9.0 before commencing with IHC staining protocol.



Immunohistochemistry (Formalin/PFA-fixed paraffin-embedded sections) - Anti-Geminin antibody [EPR14637] (ab195047)

Immunohistochemical analysis of paraffin-embedded Human triple-negative breast cancer tissue labeling Geminin with ab195047 at 1/500 followed by Goat Anti-Rabbit IgG H&L (HRP) (**ab97051**) at 1/500. Nucleus staining on Human triple-negative breast cancer tissue is observed. Counter stained with Hematoxylin. Negative control: Used PBS instead of primary antibody and **ab97051** at 1/500 as secondary antibody.

Perform heat mediated antigen retrieval with Tris/EDTA buffer pH 9.0 before commencing with IHC staining protocol.



Immunocytochemistry/ Immunofluorescence - Anti-Geminin antibody [EPR14637] (ab195047)

This image is courtesy of an abreview by Kirk Mcmanus

ab195047 staining Geminin in the HeLa cell line from Human cervix by ICC/IF (Immunocytochemistry/immunofluorescence). Cells were fixed with paraformaldehyde, permeabilized with 0.5% Triton X-100 Samples were incubated with primary antibody (1/50 in PBS ) for 1 hour at 22°C. Ab150081 (1/200) was used as the secondary antibody.

### Why choose a recombinant antibody?



**Research with confidence**  
Consistent and reproducible results



**Long-term and scalable supply**  
Recombinant technology



**Success from the first experiment**  
Confirmed specificity



**Ethical standards compliant**  
Animal-free production

Anti-Geminin antibody [EPR14637] (ab195047)

**Please note:** All products are "FOR RESEARCH USE ONLY. NOT FOR USE IN DIAGNOSTIC PROCEDURES"

### Our Abpromise to you: Quality guaranteed and expert technical support

- Replacement or refund for products not performing as stated on the datasheet
- Valid for 12 months from date of delivery
- Response to your inquiry within 24 hours
- We provide support in Chinese, English, French, German, Japanese and Spanish
- Extensive multi-media technical resources to help you
- We investigate all quality concerns to ensure our products perform to the highest standards

If the product does not perform as described on this datasheet, we will offer a refund or replacement. For full details of the Abpromise, please visit <https://www.abcam.cn/abpromise> or contact our technical team.

### Terms and conditions

- Guarantee only valid for products bought direct from Abcam or one of our authorized distributors