

Anti-Gelsolin plasma antibody [EPR1941Y] ab75832

重组 RabMAb

7 References **5 图像**

概述

产品名称	Anti-Gelsolin plasma抗体[EPR1941Y]
描述	兔单克隆抗体[EPR1941Y] to Gelsolin plasma
宿主	Rabbit
特异性	The antibody only detects the isoform 1 of the protein (86kDa).
经测试应用	适用于: WB, IP, IHC-P 不适用于: Flow Cyt or ICC/IF
种属反应性	与反应: Mouse, Human
免疫原	Synthetic peptide. This information is proprietary to Abcam and/or its suppliers.
阳性对照	Human plasma
常规说明	<p>This product is a recombinant monoclonal antibody, which offers several advantages including:</p> <ul style="list-style-type: none">- High batch-to-batch consistency and reproducibility- Improved sensitivity and specificity- Long-term security of supply- Animal-free production <p>For more information see here.</p> <p>Our RabMAb[®] technology is a patented hybridoma-based technology for making rabbit monoclonal antibodies. For details on our patents, please refer to RabMAb[®] patents.</p> <p>Mouse, Rat: We have preliminary internal testing data to indicate this antibody may not react with these species. Please contact us for more information.</p>

性能

形式	Liquid
存放说明	Shipped at 4°C. Upon delivery aliquot and store at -20°C. Avoid freeze / thaw cycles.
存储溶液	pH: 7.20 Preservative: 0.05% Sodium azide Constituents: 0.1% BSA, 40% Glycerol (glycerin, glycerine), 9.85% Tris glycine, 50% Tissue culture supernatant
纯度	Protein A purified

克隆 单克隆
克隆编号 EPR1941Y
同种型 IgG

应用

The Abpromise guarantee **Abpromise™**承诺保证使用ab75832于以下的经测试应用

“应用说明”部分下显示的仅为推荐的起始稀释度;实际最佳的稀释度/浓度应由使用者检定。

应用	Ab评论	说明
WB		1/25000 - 1/50000. Detects a band of approximately 90 kDa (predicted molecular weight: 86 kDa).
IP		1/50.
IHC-P		1/100 - 1/250. Perform heat mediated antigen retrieval via the pressure cooker method before commencing with IHC staining protocol.

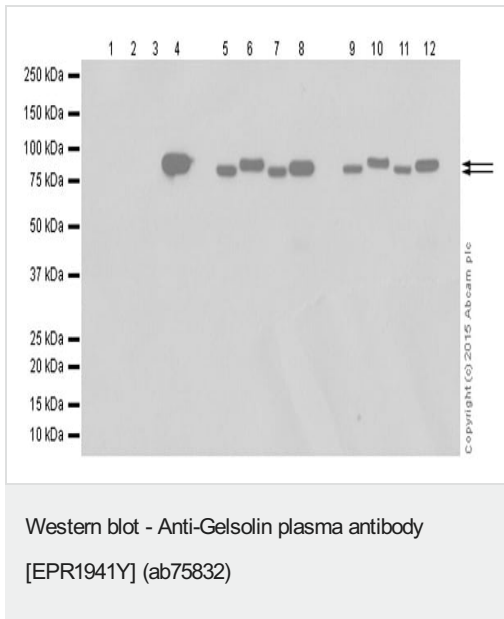
应用说明 Is unsuitable for Flow Cyt or ICC/IF.

靶标

相关性 Gelsolin is a calcium regulated, actin modulating protein that binds to the plus (or barbed) ends of actin monomers or filaments, preventing monomer exchange (end blocking or capping). It can promote the assembly of monomers into filaments (nucleation) as well as sever filaments already formed. It plays a role in phosphoinositide mediated disassembly of actin filaments in Sertoli cell adhesion complexes; it may regulate sperm release and turnover of the blood testis barrier [RGD], and severs actin filaments in the presence of submicromolar calcium, thereby solating cytoplasmic actin gels. A calcium independent mechanism reverses the process. Northern blot analysis suggested that a single gene encodes both cell and plasma gelsolins. This protein may be unique in that it is made for both secretion and intracytoplasmic location.

细胞定位 Secreted

图片



Lanes 1-4 : Anti-Gelsolin plasma antibody [EPR1941Y] (ab75832) at 1/10000 dilution

Lanes 5-8 : Anti-Gelsolin antibody [EPR1942] ([ab109014](#)) at 1/20000 dilution

Lanes 9-12 : Anti-Gelsolin antibody [EP1940Y] ([ab134183](#)) at 1/10000 dilution

Lanes 1 & 5 & 9 : THP-1 (human acute monocytic leukemia) whole cell lysate

Lanes 2 & 6 & 10 : THP-1 cultured medium

Lanes 3 & 7 & 11 : MCF-7 (human breast adenocarcinoma) whole cell lysate

Lanes 4 & 8 & 12 : Human Plasma

Lysates/proteins at 10 µg per lane.

Secondary

All lanes : Goat Anti-Rabbit IgG H&L (HRP) ([ab97051](#)) at 1/20000 dilution

Predicted band size: 86 kDa

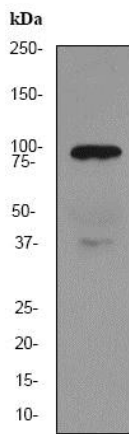
Observed band size: 81,86 kDa

Exposure time: 10 seconds

Blocking buffer 5% NFDM/TBST

Diluting buffer 5% NFDM/TBST

The secretory isoform of gelsolin is at 86kDa. The cytoplasmic isoforms of gelsolin are at 81kDa. Lane 5-8: [ab109014](#) detected both secretory and cytoplasmic isoforms. Lane 9-12: [ab134183](#) detected both secretory and cytoplasmic isoforms.



Western blot - Anti-Gelsolin plasma antibody [EPR1941Y] (ab75832)

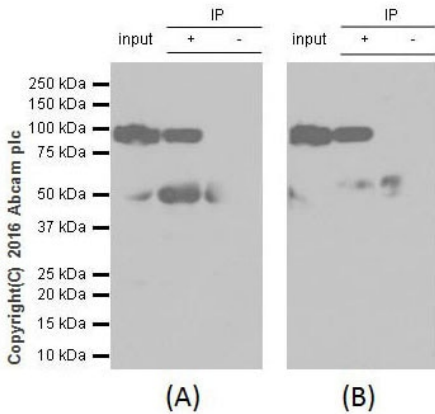
Anti-Gelsolin plasma antibody [EPR1941Y] (ab75832) at 1/50000 dilution + human plasma at 10 µg

Secondary

HRP labelled goat anti-rabbit at 1/2000 dilution

Predicted band size: 86 kDa

Observed band size: 90 kDa



Immunoprecipitation - Anti-Gelsolin plasma antibody [EPR1941Y] (ab75832)

ab75832 Immunoprecipitating Gelsolin plasma in mouse embryo whole cell lysate. 2µg of capture antibody (ab75832) per 0.35mg of lysate was used. 10µg of plasma was incubated with primary antibody (Panel A: ab75832, Panel B: **ab134183**) at a dilution of 1/1000 and VeriBlot for IP Detection Reagent (HRP) **ab131366** was used for detection at a dilution of 1/10000.

Lane 1: Human plasma

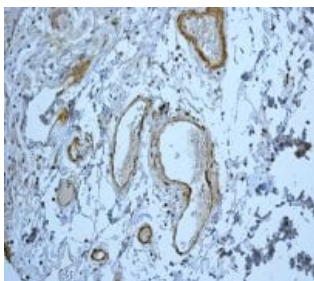
Lane 2: Human plasma

Lane 3: Rabbit monoclonal IgG (**ab172730**) instead of ab75832 in Human plasma.

Exposure time: Panel A - 8 seconds, Panel B - 3 minutes.

Blocking and dilution buffer and concentration: 5% NFDm/TBST.

The additional band at 50 kDa is a rabbit IgG heavy chain.



Immunohistochemistry (Formalin/PFA-fixed paraffin-embedded sections) - Anti-Gelsolin plasma antibody [EPR1941Y] (ab75832)

ab75832 at 1/100 dilution staining Gelsolin plasma in human colon tissue, using a HRP/AP polymerized secondary antibody.

Perform heat mediated antigen retrieval via the pressure cooker method before commencing with IHC staining protocol.

Why choose a recombinant antibody?



Research with confidence
Consistent and reproducible results



Long-term and scalable supply
Recombinant technology



Success from the first experiment
Confirmed specificity



Ethical standards compliant
Animal-free production

Anti-Gelsolin plasma antibody [EPR1941Y]
(ab75832)

Please note: All products are "FOR RESEARCH USE ONLY. NOT FOR USE IN DIAGNOSTIC PROCEDURES"

Our Abpromise to you: Quality guaranteed and expert technical support

- Replacement or refund for products not performing as stated on the datasheet
- Valid for 12 months from date of delivery
- Response to your inquiry within 24 hours
- We provide support in Chinese, English, French, German, Japanese and Spanish
- Extensive multi-media technical resources to help you
- We investigate all quality concerns to ensure our products perform to the highest standards

If the product does not perform as described on this datasheet, we will offer a refund or replacement. For full details of the Abpromise, please visit <https://www.abcam.cn/abpromise> or contact our technical team.

Terms and conditions

- Guarantee only valid for products bought direct from Abcam or one of our authorized distributors