


### Anti-Gelsolin antibody [EPR1942] ab109014

敲除验证
重组
RabMAb

[7 References](#)
[6 图像](#)

#### 概述

<b>产品名称</b>	Anti-Gelsolin抗体[EPR1942]
<b>描述</b>	兔单克隆抗体[EPR1942] to Gelsolin
<b>宿主</b>	Rabbit
<b>经测试应用</b>	<b>适用于:</b> WB, IHC-P <b>不适用于:</b> Flow Cyt (Intra), ICC/IF or IP
<b>种属反应性</b>	<b>与反应:</b> Human <b>预测可用于:</b> Mouse 
<b>免疫原</b>	Synthetic peptide. This information is proprietary to Abcam and/or its suppliers.
<b>阳性对照</b>	MCF-7, HL-60, A431, and HeLa cell lysates; Human kidney tissue; Human lung tissue; HeLa cells
<b>常规说明</b>	<p>This product is a recombinant monoclonal antibody, which offers several advantages including:</p> <ul style="list-style-type: none"> <li>- High batch-to-batch consistency and reproducibility</li> <li>- Improved sensitivity and specificity</li> <li>- Long-term security of supply</li> <li>- Animal-free production</li> </ul> <p>For more information <a href="#">see here</a>.</p> <p>Our RabMAb<sup>®</sup> technology is a patented hybridoma-based technology for making rabbit monoclonal antibodies. For details on our patents, please refer to <a href="#">RabMAb<sup>®</sup> patents</a>.</p> <p>Rat: We have preliminary internal testing data to indicate this antibody may not react with this species. Please contact us for more information.</p>

#### 性能

<b>形式</b>	Liquid
<b>存放说明</b>	Shipped at 4°C. Store at -20°C. Stable for 12 months at -20°C.
<b>存储溶液</b>	pH: 7.20 Preservative: 0.05% Sodium azide Constituents: 0.1% BSA, 40% Glycerol (glycerin, glycerine), 9.85% Tris glycine, 50% Tissue culture supernatant
<b>纯度</b>	Protein A purified

克隆	单克隆
克隆编号	EPR1942
同种型	IgG

## 应用

**The Abpromise guarantee**      **Abpromise™**承诺保证使用ab109014于以下的经测试应用

“应用说明”部分下显示的仅为推荐的起始稀释度;实际最佳的稀释度/浓度应由使用者检定。

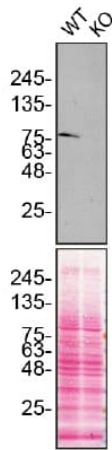
应用	Ab评论	说明
WB		1/20000 - 1/50000. Predicted molecular weight: 86 kDa.
IHC-P		1/250 - 1/500. Perform heat mediated antigen retrieval with citrate buffer pH 6 before commencing with IHC staining protocol.

**应用说明**      Is unsuitable for Flow Cyt (Intra), ICC/IF or IP.

## 靶标

<b>功能</b>	Calcium-regulated, actin-modulating protein that binds to the plus (or barbed) ends of actin monomers or filaments, preventing monomer exchange (end-blocking or capping). It can promote the assembly of monomers into filaments (nucleation) as well as sever filaments already formed. Plays a role in ciliogenesis.
<b>组织特异性</b>	Phagocytic cells, platelets, fibroblasts, nonmuscle cells, smooth and skeletal muscle cells.
<b>疾病相关</b>	Defects in GSN are the cause of amyloidosis type 5 (AMYL5) [MIM:105120]; also known as familial amyloidosis Finnish type. AMYL5 is a hereditary generalized amyloidosis due to gelsolin amyloid deposition. It is typically characterized by cranial neuropathy and lattice corneal dystrophy. Most patients have modest involvement of internal organs, but severe systemic disease can develop in some individuals causing peripheral polyneuropathy, amyloid cardiomyopathy, and nephrotic syndrome leading to renal failure.
<b>序列相似性</b>	Belongs to the villin/gelsolin family. Contains 6 gelsolin-like repeats.
<b>翻译后修饰</b>	Phosphorylation on Tyr-86, Tyr-409, Tyr-465, Tyr-603 and Tyr-651 in vitro is induced in presence of phospholipids.
<b>细胞定位</b>	Cytoplasm > cytoskeleton and Secreted.

## 图片



Western blot - Anti-Gelsolin antibody [EPR1942]  
(ab109014)

**All lanes :** Anti-Gelsolin antibody [EPR1942] (ab109014) at 1/20000 dilution

**Lane 1 :** Wild-type HeLa cell lysate

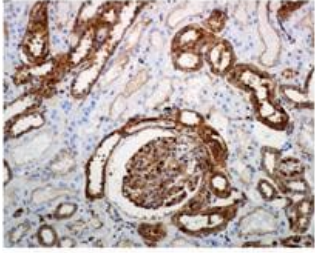
**Lane 2 :** GSN knockout HeLa cell lysate

Lysates/proteins at 20 µg per lane.

Performed under reducing conditions.

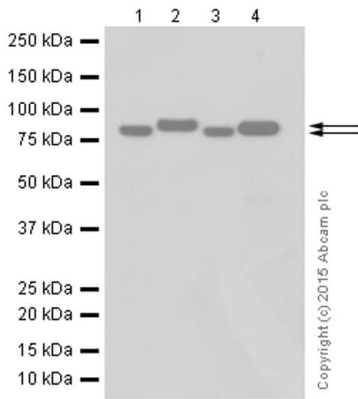
**Predicted band size:** 86 kDa

ab109014 was shown to react with GSN in wild-type HeLa cells in Western blot with loss of signal observed in GSN knockout cell line **ab265201** (GSN knockout cell lysate **ab257204**). Wild-type HeLa and GSN knockout cell lysates were subjected to SDS-PAGE. Membranes were blocked in 5% milk in TBST for 1 hr before incubation with ab109014 overnight at 4 °C at a 1/20000 dilution. Blots were incubated with goat anti-rabbit HRP secondary antibodies at 1/5000 before imaging. These data were provided by YCharOS Inc., an open science company with the mission of characterizing commercially available antibody reagents for all human proteins. Abcam and YCharOS are working together to help address the reproducibility crisis by enabling the life science community to better evaluate commercially available antibodies.



Immunohistochemistry (Formalin/PFA-fixed paraffin-embedded sections) - Anti-Gelsolin antibody [EPR1942] (ab109014)

Immunohistochemical analysis of Gelsolin expression in paraffin-embedded human kidney tissue using ab109014 at 1/250 dilution. Perform heat mediated antigen retrieval with citrate buffer pH 6 before commencing with IHC staining protocol.



Western blot - Anti-Gelsolin antibody [EPR1942] (ab109014)

**All lanes** : Anti-Gelsolin antibody [EPR1942] (ab109014) at 1/20000 dilution

- Lane 1** : THP-1 whole cell lysate
- Lane 2** : THP-1 cultured medium
- Lane 3** : MCF-7 whole cell lysate
- Lane 4** : Human Plasma

Lysates/proteins at 10 µg per lane.

**Secondary**

**All lanes** : Goat Anti-Rabbit IgG H&L (HRP) ([ab97051](#)) at 1/20000 dilution

**Predicted band size:** 86 kDa

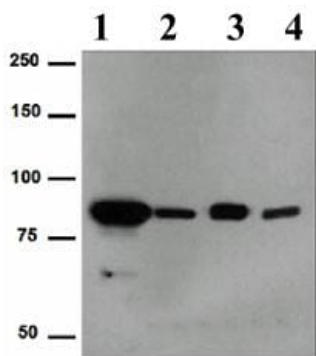
**Observed band size:** 81,86 kDa

**Exposure time:** 10 seconds

Blocking buffer 5% NFDM/TBST

Diluting buffer 5% NFDM/TBST

The secretory isoform of gelsolin is at 86kDa. The cytoplasmic isoforms of gelsolin are at 81kDa.



Western blot - Anti-Gelsolin antibody [EPR1942] (ab109014)

**All lanes :** Anti-Gelsolin antibody [EPR1942] (ab109014) at 1/50000 dilution

**Lane 1 :** MCF7 cell lysate

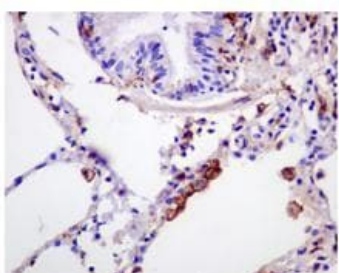
**Lane 2 :** HL60 cell lysate

**Lane 3 :** A431 cell lysate

**Lane 4 :** HeLa cell lysate

Lysates/proteins at 10 µg per lane.

**Predicted band size:** 86 kDa



Immunohistochemistry (Formalin/PFA-fixed paraffin-embedded sections) - Anti-Gelsolin antibody [EPR1942] (ab109014)

Immunohistochemical analysis of Gelsolin expression in paraffin-embedded Human lung tissue using ab109014 at 1/250 dilution.

Perform heat mediated antigen retrieval with citrate buffer pH 6 before commencing with IHC staining protocol.

### Why choose a recombinant antibody?



**Research with confidence**  
Consistent and reproducible results



**Long-term and scalable supply**  
Recombinant technology



**Success from the first experiment**  
Confirmed specificity



**Ethical standards compliant**  
Animal-free production

Anti-Gelsolin antibody [EPR1942] (ab109014)

**Please note:** All products are "FOR RESEARCH USE ONLY. NOT FOR USE IN DIAGNOSTIC PROCEDURES"

### **Our Abpromise to you: Quality guaranteed and expert technical support**

---

- Replacement or refund for products not performing as stated on the datasheet
- Valid for 12 months from date of delivery
- Response to your inquiry within 24 hours
  
- We provide support in Chinese, English, French, German, Japanese and Spanish
- Extensive multi-media technical resources to help you
- We investigate all quality concerns to ensure our products perform to the highest standards

If the product does not perform as described on this datasheet, we will offer a refund or replacement. For full details of the Abpromise, please visit <https://www.abcam.cn/abpromise> or contact our technical team.

### **Terms and conditions**

---

- Guarantee only valid for products bought direct from Abcam or one of our authorized distributors