

Anti-GDF15 antibody ab82569

1 [References](#) **2** [图像](#)

概述

产品名称	Anti-GDF15抗体
描述	兔多克隆抗体to GDF15
宿主	Rabbit
经测试应用	适用于: ICC/IF, WB
种属反应性	与反应: Human
免疫原	Synthetic peptide corresponding to Human GDF15 aa 250 to the C-terminus conjugated to keyhole limpet haemocyanin. (Peptide available as ab95048)
阳性对照	Recombinant human GDF15 protein (ab125769) can be used as a positive control in WB. This antibody gave a positive signal in the following human tissue lysates: Prostate; Colon.
常规说明	<p>The Life Science industry has been in the grips of a reproducibility crisis for a number of years. Abcam is leading the way in addressing this with our range of recombinant monoclonal antibodies and knockout edited cell lines for gold-standard validation. Please check that this product meets your needs before purchasing.</p> <p>If you have any questions, special requirements or concerns, please send us an inquiry and/or contact our Support team ahead of purchase. Recommended alternatives for this product can be found below, along with publications, customer reviews and Q&As</p>

性能

形式	Liquid
存放说明	Shipped at 4°C. Store at +4°C short term (1-2 weeks). Upon delivery aliquot. Store at -20°C or -80°C. Avoid freeze / thaw cycle.
存储溶液	<p>pH: 7.40</p> <p>Preservative: 0.02% Sodium azide</p> <p>Constituent: PBS</p> <p>Batches of this product that have a concentration < 1mg/ml may have BSA added as a stabilising agent. If you would like information about the formulation of a specific lot, please contact our scientific support team who will be happy to help.</p>
纯度	Immunogen affinity purified

克隆

多克隆

同种型

IgG

应用

The Abpromise guarantee **Abpromise™**承诺保证使用ab82569于以下的经测试应用

“应用说明”部分 下显示的仅为推荐的起始稀释度;实际最佳的稀释度/浓度应由使用者检定。

应用	Ab评论	说明
ICC/IF		Use a concentration of 5 µg/ml.
WB		Use a concentration of 1 µg/ml. Detects a band of approximately 34 kDa (predicted molecular weight: 34 kDa).

靶标

组织特异性

Highly expressed in placenta, with lower levels in prostate and colon and some expression in kidney.

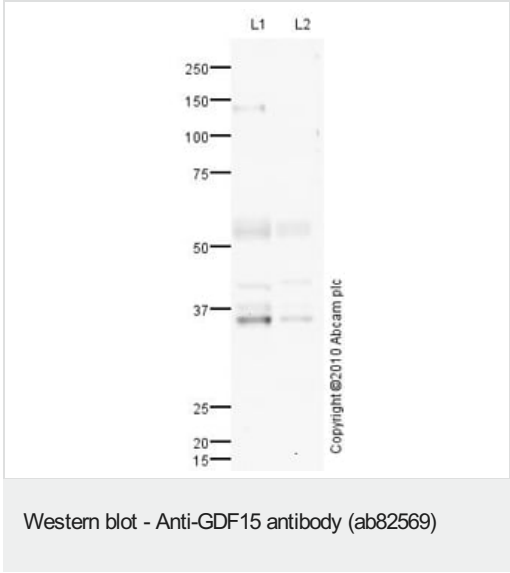
序列相似性

Belongs to the TGF-beta family.

细胞定位

Secreted.

图片



All lanes : Anti-GDF15 antibody (ab82569) at 1 µg/ml

Lane 1 : Prostate (Human) Cytoplasmic Lysate - adult normal tissue ([ab30294](#))

Lane 2 : Human colon tissue lysate - total protein ([ab30051](#))

Lysates/proteins at 10 µg/ml per lane.

Secondary

All lanes : Goat polyclonal to Rabbit IgG - H&L - Pre-Adsorbed (HRP) at 1/3000 dilution

Developed using the ECL technique.

Performed under reducing conditions.

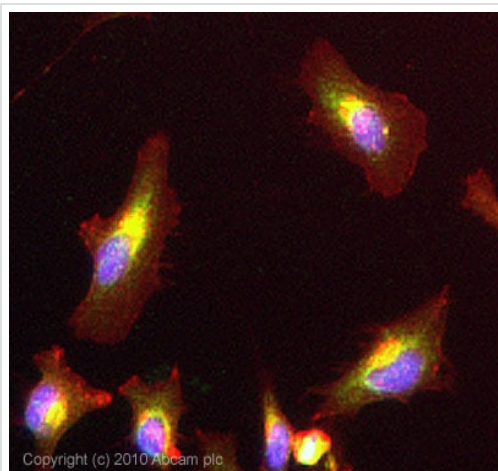
Predicted band size: 34 kDa

Observed band size: 34 kDa

Additional bands at: 53 kDa. We are unsure as to the identity of

these extra bands.

Exposure time: 20 minutes



Immunocytochemistry/ Immunofluorescence - Anti-GDF15 antibody (ab82569)

ICC/IF image of ab82569 stained HeLa cells. The cells were 100% Methanol fixed (5 min) and then incubated in 1%BSA / 10% normal Goat serum / 0.3M glycine in 0.1% PBS-Tween for 1h to permeabilise the cells and block non-specific protein-protein interactions. The cells were then incubated with the antibody (ab82569, 5µg/ml) overnight at +4°C. The secondary antibody (green) was Alexa Fluor® 488 Goat anti-Rabbit IgG (H+L) used at a 1/1000 dilution for 1h. Alexa Fluor® 594 WGA was used to label plasma membranes (red) at a 1/200 dilution for 1h. DAPI was used to stain the cell nuclei (blue) at a concentration of 1.43µM.

Please note: All products are "FOR RESEARCH USE ONLY. NOT FOR USE IN DIAGNOSTIC PROCEDURES"

Our Abpromise to you: Quality guaranteed and expert technical support

- Replacement or refund for products not performing as stated on the datasheet
- Valid for 12 months from date of delivery
- Response to your inquiry within 24 hours
- We provide support in Chinese, English, French, German, Japanese and Spanish
- Extensive multi-media technical resources to help you
- We investigate all quality concerns to ensure our products perform to the highest standards

If the product does not perform as described on this datasheet, we will offer a refund or replacement. For full details of the Abpromise, please visit <https://www.abcam.cn/abpromise> or contact our technical team.

Terms and conditions

- Guarantee only valid for products bought direct from Abcam or one of our authorized distributors