

Anti-GDF15 antibody ab39999

★★★★★ [5 Abreviews](#) [9 References](#) [5 图像](#)

概述

产品名称	Anti-GDF15抗体
描述	山羊多克隆抗体to GDF15
宿主	Goat
经测试应用	适用于: WB, IHC-Fr, ICC/IF, IHC-P, Flow Cyt (Intra)
种属反应性	与反应: Rat, Human 预测可用于: Mouse 
免疫原	Synthetic peptide: QKTDGTGVS LQTYDD, corresponding to C terminal amino acids 286-299 of Human GDF15 Run BLAST with Expasy Run BLAST with NCBI
阳性对照	Flow Cyt (Intra): HeLa cells. WB: Human prostate lysates, A549 cell lysate, CaCo-2 cell lysate, LNCaP cell lysate.
常规说明	<p>The Life Science industry has been in the grips of a reproducibility crisis for a number of years. Abcam is leading the way in addressing this with our range of recombinant monoclonal antibodies and knockout edited cell lines for gold-standard validation. Please check that this product meets your needs before purchasing.</p> <p>If you have any questions, special requirements or concerns, please send us an inquiry and/or contact our Support team ahead of purchase. Recommended alternatives for this product can be found below, along with publications, customer reviews and Q&As</p>

性能

形式	Liquid
存放说明	Shipped at 4°C. Upon delivery aliquot and store at -20°C. Avoid freeze / thaw cycles.
存储溶液	pH: 7.30 Preservative: 0.02% Sodium azide Constituents: Tris buffered saline, 0.5% BSA
纯度	Immunogen affinity purified
纯化说明	Purified from goat serum by ammonium sulphate precipitation followed by antigen affinity chromatography using the immunizing peptide.
克隆	多克隆

同种型IgG

应用

The Abpromise guarantee **Abpromise™**承诺保证使用ab39999于以下的经测试应用

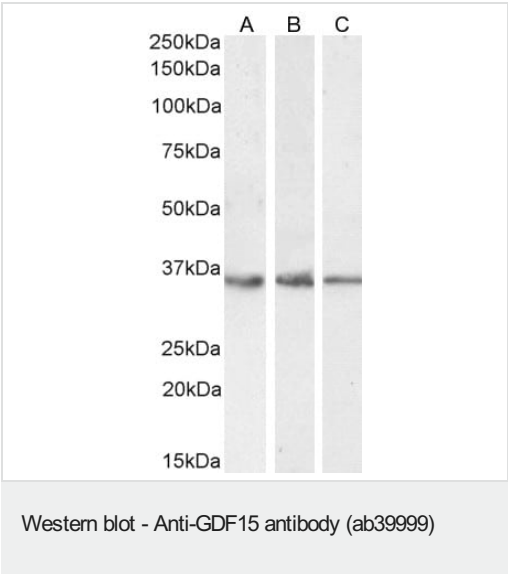
“应用说明”部分 下显示的仅为推荐的起始稀释度;实际最佳的稀释度/浓度应由使用者检定。

应用	Ab评论	说明
WB	★★★★☆ (2)	Use a concentration of 0.1 µg/ml. Detects a band of approximately 30-35 kDa (predicted molecular weight: 34 kDa). 1 hour primary incubation is recommended for this product.
IHC-Fr	★★★★☆ (1)	Use at an assay dependent concentration. See Abreview.
ICC/IF	★★★★★ (1)	Use at an assay dependent concentration.
IHC-P	★★★★☆ (1)	Use a concentration of 7 µg/ml.
Flow Cyt (Intra)		Use a concentration of 10 µg/ml.

靶标

组织特异性	Highly expressed in placenta, with lower levels in prostate and colon and some expression in kidney.
序列相似性	Belongs to the TGF-beta family.
细胞定位	Secreted.

图片



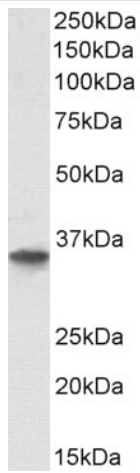
Lanes 1-2 : Anti-GDF15 antibody (ab39999) at 0.1 µg/ml
Lane 3 : Anti-GDF15 antibody (ab39999) at 0.3 µg/ml

Lane 1 : A549 cell lysate
Lane 2 : CaCo-2 cell lysate
Lane 3 : LNCaP cell lysate

Lysates/proteins at 35 µg per lane.

Predicted band size: 34 kDa

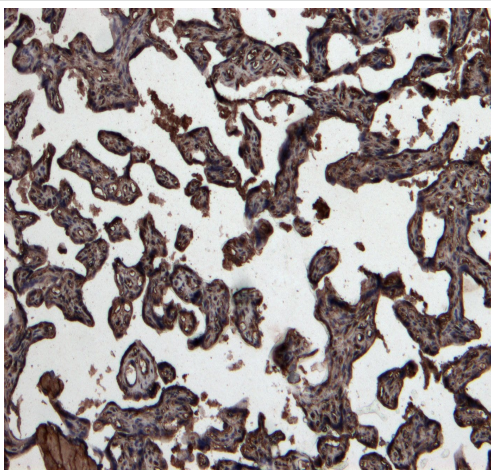
Detected by chemiluminescence.



Western blot - Anti-GDF15 antibody (ab39999)

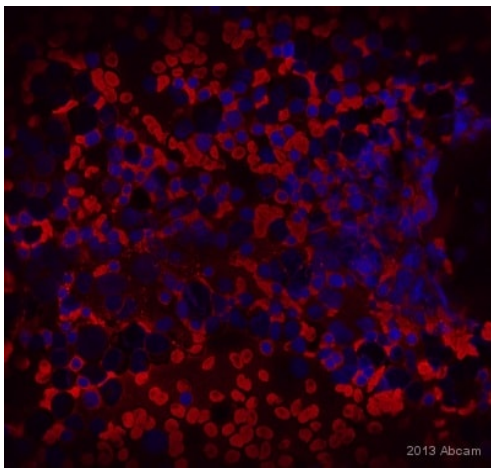
Anti-GDF15 antibody (ab39999) at 0.5 $\mu\text{g/ml}$ + Human prostate whole cell lysate (protein in RIPA buffer) at 35 μg

Predicted band size: 34 kDa



Immunohistochemistry (Formalin/PFA-fixed paraffin-embedded sections) - Anti-GDF15 antibody (ab39999)

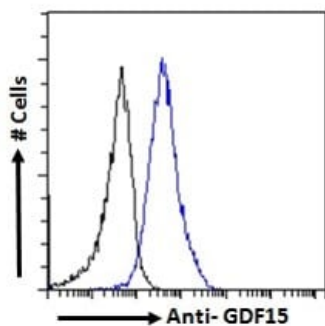
Immunohistochemical analysis of paraffin embedded Human placenta stained with ab39999 at 7 $\mu\text{g/ml}$. Heat induced antigen retrieval with citrate buffer pH 6, HRP-staining.



Immunocytochemistry/ Immunofluorescence - Anti-GDF15 antibody (ab39999)

This image is courtesy of an abreview submitted by Dr. Ruma Raha-Chowdhury, Cambridge University, United Kingdom.

ICC/IF image of human bone marrow smear stained with Ab39999(1/250). The smear was permeabilized in 0.1% PBS-Triton X for 1h and incubated with 10% donkey serum for 1hr at 24°C to block non-specific protein-protein interactions. The sections were then incubated with ab39999 used at 1/250 dilution, overnight at +4°C. The secondary antibody was Alexa Fluor® 568 donkey anti-goat used at a 1/1000 dilution for 1h. DAPI was used to stain the cell nuclei (blue) at a concentration of 1.43µM.



Flow Cytometry (Intracellular) - Anti-GDF15 antibody (ab39999)

Flow cytometric analysis of paraformaldehyde fixed, 0.5% Triton permeabilized HeLa (Human epithelial cell line from cervix adenocarcinoma) cells labeling GDF-15 using ab39999 at 10 µg/ml followed by Alexa Fluor 488 secondary antibody (blue) at 1 µg/ml. Unimmunized goat IgG was used as isotype control, followed by Alexa Fluor 488 secondary antibody (black).

Please note: All products are "FOR RESEARCH USE ONLY. NOT FOR USE IN DIAGNOSTIC PROCEDURES"

Our Abpromise to you: Quality guaranteed and expert technical support

- Replacement or refund for products not performing as stated on the datasheet
- Valid for 12 months from date of delivery
- Response to your inquiry within 24 hours
- We provide support in Chinese, English, French, German, Japanese and Spanish
- Extensive multi-media technical resources to help you
- We investigate all quality concerns to ensure our products perform to the highest standards

If the product does not perform as described on this datasheet, we will offer a refund or replacement. For full details of the Abpromise, please visit <https://www.abcam.cn/abpromise> or contact our technical team.

Terms and conditions

- Guarantee only valid for products bought direct from Abcam or one of our authorized distributors